

High Cost Fund Grant and Residential & Reintegration Services Grant

Carla Rose

District Budget Liaison

December 7, 2023

It's that time of year . . .



Holiday Happenings

Shopping

Celebrations

Gift Giving

New Year's Resolutions

***High Cost Fund Grant**

***Residential & Reintegration
Services Grant**



Learning Targets

- Requirements of the grants
- Applying for the reimbursement grants
- Important Dates
- Tips



Why Should an LEA be Interested?

- Source of revenue
 - High Cost Fund Grant – Federal funds
 - Residential and Reintegration Grant – State funds
- Offset expenditures
- Helps to maintain quality programs for all students



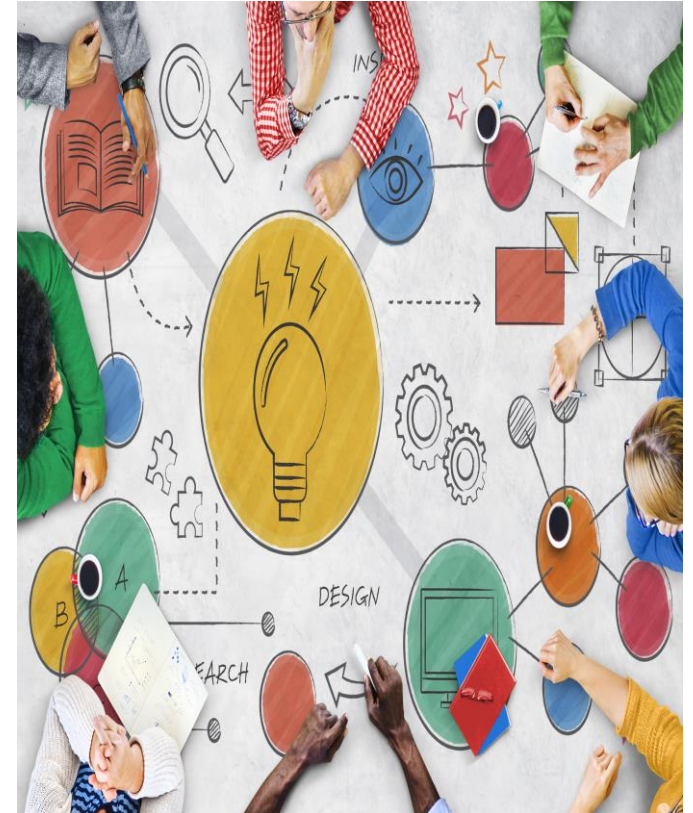
High Cost Fund Grant

HCFG Federal Regulations

- **Purpose:** To reimburse Local Education Agencies (LEAs) for funds expended on the education of individual students with Individualized Education Programs (IEPs) whose high costs exceed three times the state per pupil expenditure.
- The High Needs Risk Pool is established in 34 C.F.R. § 611 (e) (3) of the IDEA 2004 Act. The act allows the State to develop a State plan that establishes the following: a definition of a high needs child with a disability, the criteria for participation by school districts in the program, a plan to ensure that placements supported by the funds are consistent with requirements in 34 C.F.R. § 300.114 – 300.118, the funding mechanism for the distribution of funds under this program and an annual distribution schedule in accordance with the appropriation of other funds in that fiscal year.

High Cost Fund Grant - Georgia Plan

- The Georgia Department of Education (GaDOE) has established a High Cost Fund Grant to support school systems and schools who serve our state's students with the most difficult needs.
- These funds will assist local educational agencies in covering the direct special education instructional costs of children with disabilities who meet the criteria established in IDEA 2004 and the system plan for GHCF.



Definition

What is a “High Needs Child”?

A “High Needs Child” is defined as a child who has been identified as eligible for special education and related services and has a current Individualized Education Program (IEP). The intensity, frequency and diversity of the special education and related services needs of the child exceed the typical needs of a child with a disability.

IDEA 2004 requires the eligibility for **reimbursement for a high needs student be at least three times the average per pupil expenditure** as defined in Section 9101 of the Elementary and Secondary Education Act of 1965.

Criteria for Award

- The LEA may only seek reimbursement for appropriately incurred costs identified within the child's IEP that exceed three times the state average pupil expenditure as calculated annually (approximately \$27,000).
- Transportation costs are limited to personnel, equipment or services required for the specific high need costs as identified in the child's IEP.
- Disbursements from this fund shall not be used to pay costs that otherwise would be reimbursed as medical assistance for a child with a disability under the State Medicaid program under Title XIX of the Social Security Act.

Eligibility Requirements

- IDEA 2004 requires the eligibility for reimbursement for a high need's student be at least three times the average per pupil expenditure (approximately \$27,000)
- The LEA must have expended funds on services or supports in accordance with the student's IEP.
- The LEA may only seek reimbursement for incurred costs during the current fiscal year (July 1 to June 30).



Allowable Costs for High Cost Fund

All costs must be specific to the high-cost student and documented in the student's IEP.

Special Education Direct Services (such as):

Teacher

Paraprofessional

Speech

ESY Teacher Costs

ESY Paraprofessional Costs

(This is not a comprehensive list.)

Allowable Costs for HCFG

All costs must be specific to the high-cost student and documented in the student's IEP.

Related services (such as):

Bus Driver and Bus Monitor

Speech-Language Pathology

Interpreting Services

Psychological Services and Counseling Services (must be direct)

Physical and Occupational Therapy

Therapeutic Recreation and Orientation and Mobility Services

Nursing Services and Social Worker Services

AT device specific to student

(This is not an comprehensive list.)

Sample Profile of a High Needs Student

- Hearing Impaired
- Visually Impaired
- Other Health Impaired Students with nursing services
- Student with severe emotional, behavior disorder
- Student with Multiple Disabilities



High Cost Fund Grant Application Process

HCFG Application Process

- Access the High Cost Grant Online Submission Manual
- Create an account at www.gahcf.org

Link to Training Manual:

[High Cost Grant Online Submission Manual](#)

- Student Information
- Enter Costs
 - Special Ed Direct Services Costs
 - Special Ed Related Services Costs
- Upload IEPs that cover the entire current fiscal year (July 1 – June 30)
- Review and Submit
- Special Education Director must signoff

HCFG Application



GRANT FOR HIGH COST FUND
Georgia Department of Education
Division for Special Education Services and Supports

A new login and password are required to complete and submit applications using this web site each year.

****CLICK HERE TO CREATE A NEW ACCOUNT****

To access your account enter login and password below:

Login:	<input type="text"/>
Password:	<input type="password"/>
<input type="button" value="Login"/>	

The Login and Password ARE CASE SENSITIVE.

[GAHCF Technical Manual](#)

[GAHCF Technical Training Webinar](#)

For technical support call the GEM HELP DESK at 207.985.8802 or email support@gemsoftwaredevelopment.com
(Please include the name of your school district in email.)

- GEM Software - <https://www.gahcf.org>
- Application Window - January 1 – February 15
- January 1 – # of LEA allowable applications
- Special Education Director **must** sign off

High Cost Fund Grant Tips

- Applications take considerable time to prepare.
- Do not expect reimbursement for the whole amount of the application
- Grant period – July 1st through June 30th of the current fiscal year.
- LEA's will be notified via the Director's EMAIL BLAST when the Board item has been approved.
- LEA's who receive a High Cost Fund Grant will receive a Grant Award Notification uploaded in the GaDOE portal.
- High Cost Fund Grants are extra funds that are granted.

High Cost Grant Fund Resources

- [High Cost Grant Fund Resources](#) (scroll to the bottom of the page)

Federal Grant for High Cost Fund

- Georgia's Plan for High Cost
- Grant for High Cost Funds - Sample Application
- Grant for High Cost Funds Q&A
- Georgia's High Cost Grant Submission Training Webinar
- Georgia's High Cost Grant Online Submission Manual
- High Cost Grant Module
- FY21 High Cost and Residential Reintegration Grants Webinar PowerPoint

High Cost Fund Grant Questions



Residential and Reintegration Services Grant

Federal Regulations

- **Purpose:** To assist local school systems in **partial** funding for a high-cost placement of a student with disabilities to a private residential program or reintegration back from a residential program.

Criteria for Funding

State Rule 160-4-7-.18

Student with profound and severe disabilities requiring residential services who are wards of the State.

Students with profound and severe disabilities requiring reintegration from a residential program.

Students with profound disabilities who require residential services.

Student with severe disabilities who require residential services.

Residential and Reintegration Application Requirements

- A private residential school must:
 - Comply with the student's IEP
 - Comply with Georgia Rules governing special education
 - Be on the approved state list
- An LEA must first consider an in-state private residential school before an out of state school.
- A private out of state school must meet the requirements of the state in which it is located.

Residential and Reintegration Application Requirements (continued)

- A full continuum of services must be considered before a residential placement is considered.
- Only direct special education costs, related services, and room and board for the current fiscal year (July 1 through June 30) should be submitted.
- Minimum amount is \$30,000.00
- Documentation must be submitted with the application

Residential and Reintegration Services Application

- **Link to Application:**
[Grant for Residential and Reintegration Services Application](#)
- Submission window is January 1 – February 15.
- There is no grant carryover period.
- Superintendents must sign each application.

GRANT FOR RESIDENTIAL AND REINTEGRATION SERVICES Georgia Department of Education Division for Special Education Services and Supports	
SYSTEM: School Year: 201 - 201	
System Contact:	Phone:
Email:	
<input type="checkbox"/> Initial	<input type="checkbox"/> Parent Custody
<input type="checkbox"/> Continuation	<input type="checkbox"/> Ward of the State
Student's Name:	Date of Birth:
The Student's Primary Disability:	
Father's/Guardian's/Surrogate's Full Name:	Mother's/Guardian's/Surrogate's Full Name:
Home Address:	
(Street)	(City/State) (Zip) (Phone)
Private Residential School Name:	Phone:
For an out of state school: Submit documentation that school is on the approved list for the state in which it resides.	
Address:	
Contact Person:	
Provide the specific cost breakdown for services provided by the private residential school. Total cost of over \$30,000 should be used as the minimum to be considered in the application. Invoices required.	
Special Education Services	\$ _____ day/month
Related Services	\$ _____ day/month
Room and Board	\$ _____ day/month
TOTAL COST OF RESIDENTIAL PLACEMENT	\$ _____ day/month
\$ _____/Month X _____ Months OR \$ _____/Day X _____ Days	\$ _____
Need actual months or days served for educational program only	

Residential and Reintegration Services Application (continued)

- All sections of the application must be completed.
- Completed applications with supporting documentation should be scanned and emailed to Budget Liaison using the *GaDOE Portal email*.
 - Copy of student's current eligibility report
 - Current and completed IEP
 - Reintegration plan as appropriate
 - Actual invoices to date
 - Documentation that out of state school has been approved

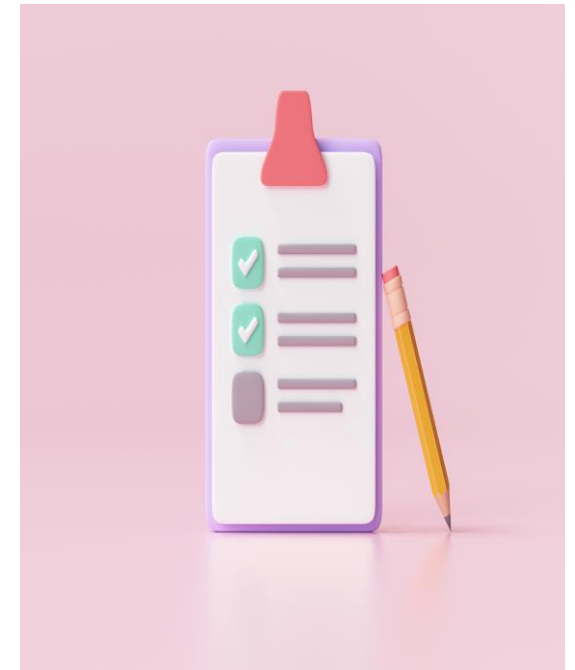
Residential and Reintegration Services Resources

- GaDOE Budget, Grants, and Consolidated Application webpage
 - [Residential and Reintegration Services Instructions](#)
 - [Residential Reintegration Grant Module](#)



Residential and Reintegration Tips

- Do not wait until the last minute.
- Grant period – July 1st through June 30th of the current fiscal year.
- LEA's will be notified via the Director's EMAIL BLAST when the board item has been approved.
- LEA's who receive a Residential and Reintegration Grant will receive a Grant Award Notification uploaded in the GaDOE portal.
- Residential and Reintegration Grants are a bonus for a district. The funds were not expected and are not guaranteed.



Questions – Residential & Reintegration Services Grant



Budget Unit Contacts

Andrew Britt

Andrew.Britt@doe.k12.ga.us

404-275-6394

Stephanie Hurst

Stephanie.Hurst@doe.k12.ga.us

404-709-0871

Nicole Croom

Ncroom@doe.k12.ga.us

678-850-1171

Carla Rose

Carla.Rose@doe.k12.ga.us

404-673-3473

Joni Taylor

Joni.Taylor@doe.k12.ga.us

678-378-9428

*We
Are
Here
To
Help!*

From The Budget Unit Team

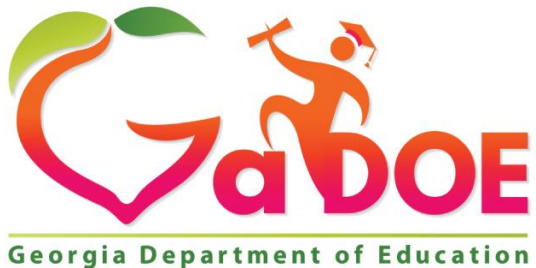


GaDOE Educating Georgia's Future

www.gadoe.org

   @georgiadeptofed

 youtube.com/user/GaDOEmedia



**EDUCATING
GEORGIA'S FUTURE**