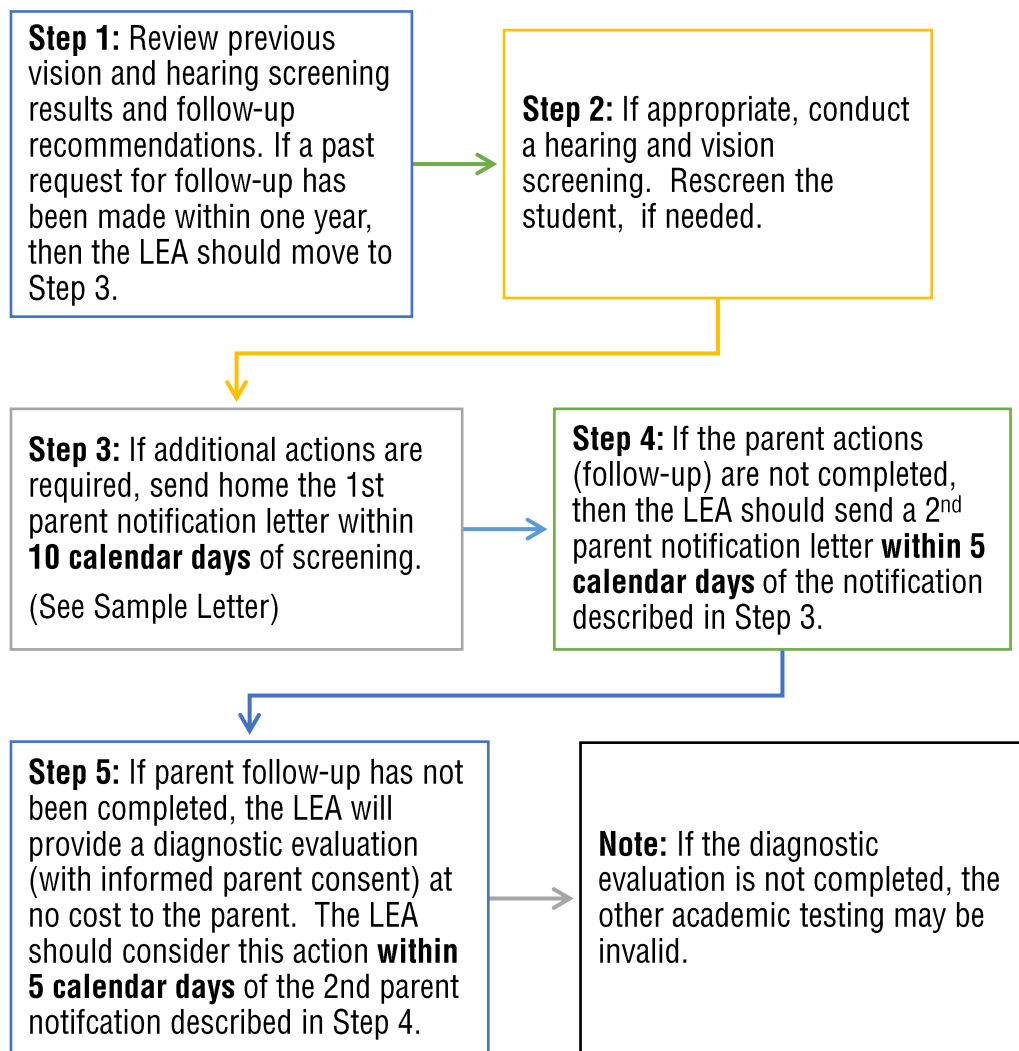


Hearing & Vision Screenings

Flow Chart for Referrals to Evaluation for Special Education (Best Practice Guidance)

Below is a timeline for completion of the hearing and vision screenings once a student has been referred to special education and consent for evaluation has been received.



*If the student already has a diagnosis of hearing loss or vision impairment prior to the referral to evaluation, see “**Hearing & Vision Considerations**”