

PCGenesis

Current Status & Future Plans

GASBO

Augusta, GA

November 9, 2022

Agenda

- **Introduction**
- Migration to Database Technology
- What's Next
- Full Transaction Processing
- PCGenesis Databases
- Getting Ready for 2023 GHI
- PCGenesis Broadcast E-mail List



PCGenesis

Sessions/Training at GASBO

- **Session 1 – 8:40** *Wed 11/9/2022*
 - **PCGenesis Current Status & Future Plans**
- **Session 2 – 10:00** *Wed 11/9/2022*
 - Ransomware Attacks and Backing Up PCGenesis
- **Session 3 – 11:00** *Wed 11/9/2022*
 - PCGenesis and the CPI Process
- **Session 4 – 2:10** *Wed 11/9/2022*
 - Payroll for Beginners
- **Session 5 – 3:30** *Wed 11/9/2022*
 - PCGenesis Budget System Overview
- **Session 6 – 9:00** *Thur 11/10/2022*
 - PCGenesis Budget System Gross Data, Budget Flag, Salary Schedules
- **Session 7– 10:20** *Thur 11/10/2022*
 - PCGenesis Budget System Playing in the Sandbox
- **Session 8 – 11:20** *Thur 11/10/2022*
 - PCGenesis Budget System Create Final Budget

PowerPoints Available on Documentation Website

PCGenesis

Financial Accounting and Reporting System Operations Guide

Payroll System Operations Guide

Personnel System Operations Guide

Certified/Classified Personnel Information (CPI) System Operations Guide

Budget System Operations Guide

LUAS Manual

Technical System Operations Guide

Release Information

Release Information

Calendar Year 2022 Release Information

- Release 22.03.00 – Miscellaneous Changes / Conversion to PCGenesisDB Database / Installation Instructions
- Release 22.02.00 – 2022 Fiscal Year-End Updates / Conversion to PCGenesisDB Database / Installation Instructions
- Release 22.01.00 – Miscellaneous Updates / Conversion to PCGenesisDB Database / Installation Instructions

Calendar Year 2021 Release Information

- Release 21.04.00 – Calendar Year 2021 Year-End Closing Procedures / Miscellaneous Updates / Installation Instructions
- 2022 SHBP Employee Premiums
- Release 21.03.00 – Miscellaneous Changes / Conversion to PCGenesisDB Database / Installation Instructions
- Release 21.02.00 – 2021 Fiscal Year-End Updates / Conversion to PCGenesisDB Database / Installation Instructions
- Release 21.01.00 – Miscellaneous Updates / Conversion to PCGenesisDB Database / Installation Instructions

Calendar Year 2021 PowerPoints

- GASBO 2021 Session 1 - PCGenesis Current Status and Future Plans
- GASBO 2021 Session 2 - PCGenesis Future: Migration to a Relational Database

2022 GASBO PowerPoints will be available on PCG documentation website

PCGenesis Current Status

The PCGenesis Development Team:

- **Diane Ochala**
- **Angela Tennyson**
- **Karen McArthur**
- **Stephanie Smith**

PCGenesis Current Status

The PCGenesis development team reports to:

- **Steve Roache**, Director, Applications Development
- Steve Roache reports to **Jay Heap**, Associate Superintendent for Enterprise Services and Applications
- Jay Heap reports to **Dr. Keith Osburn**, Chief Information Officer, Deputy Superintendent for Technology Services

PCGenesis Current Status

The PCGenesis development team provides updates to:

- **Amy Rowell**, Director, Financial Review.
- Amy Rowell reports to **Rusk Roam**, Chief Financial Officer.

PCGenesis Current Status

In addition to the three developers, we have two help desk personnel.

- **Katie Green**
- **Stephanie Smith**

The PCGenesis help desk reports to:

- **Kathy Aspy**, Data Collections & Reporting Manager
- Kathy Aspy reports to **Nicholas L. Handville**, Chief Data and Privacy Officer Technology Services

PCGenesis Webinars

- Coming soon!!!
- **Stephanie Smith** will start hosting short PCGenesis informational webinars
 - Short segments on various topics
 - Suggestions are welcome!
 - Announcements will come via the portal and broadcast e-mails

Agenda

- Introduction
- **Migration to Database Technology**
- What's Next
- Full Transaction Processing
- PCGenesis Databases
- Getting Ready for 2023 GHI
- PCGenesis Broadcast E-mail List



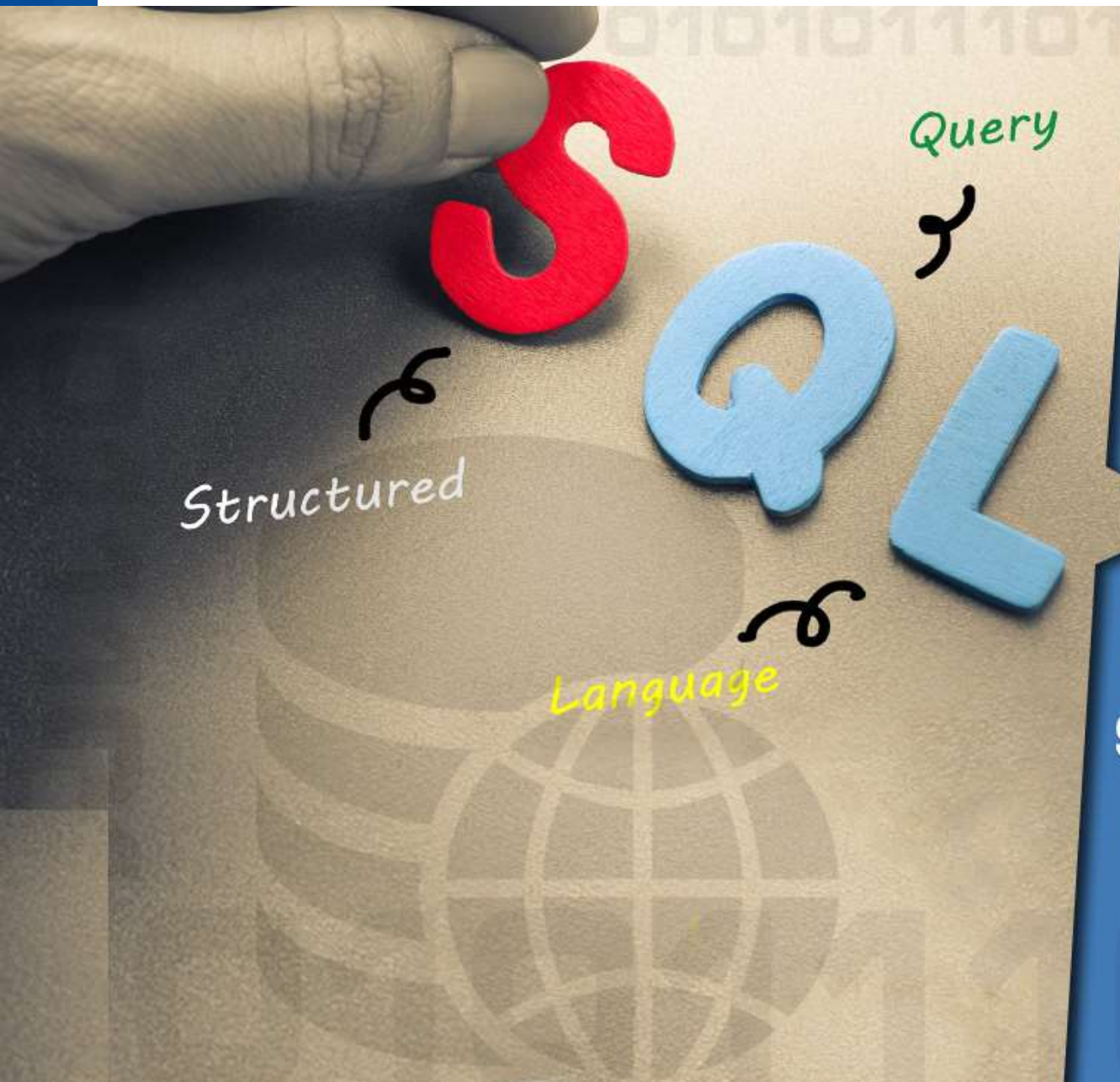
PCGENESIS FUTURE

Migration to Database Technology

- We are moving all PCGenesis data to a **SQL Server** database.
- We are using a **FREE** version of SQL Server called **Microsoft SQL Server Express**.



Advantages of a Relational Database



Microsoft SQL server is one of the most robust DBMS software used globally.

PCGENESIS FUTURE

Migration to Database Technology

- We started the **FAR** conversion in 2019
- And now....
 - The FAR conversion is basically complete!

PCGENESIS FUTURE

Migration to Database Technology

The major financial files have been converted into database tables

- ✓ Banks
- ✓ Vendors
- ✓ Sources
- ✓ Accounts
- ✓ Audit
- ✓ Journals
- ✓ Investments
- ✓ Claims
- ✓ Purchase orders
- ✓ Receipts
- ✓ Receivables
- ✓ Control

PCGENESIS FUTURE

Migration to Database Technology

- We started the **PAY** conversion in March 2022
- And now....
 - The PAY conversion is basically complete!

PCGENESIS FUTURE

Migration to Database Technology

The major payroll files have been converted into database tables

- ✓ Payroll File
- ✓ Gross Data
- ✓ Deductions
- ✓ Manual Checks
- ✓ Voided Checks
- ✓ SANDBOX Files
- ✓ Garnishment Data
- ✓ Direct Deposit
- ✓ Personnel
- ✓ Earnings History
- ✓ Payroll Check Master
- ✓ CPI File

Agenda

- Introduction
- Migration to Database Technology
- **What's Next**
- Full Transaction Processing
- PCGenesis Databases
- Getting Ready for 2023 GHI
- PCGenesis Broadcast E-mail List



What's Next?

- So, we have finished the major files for the FAR and PAY conversion...
- What's next????

22.03.01

November Release

- **2023 SHBP Premiums**

- For the November release, the development team will post a single file which contains the new SHBP health premiums

GHIRATES2023.csv

- The 22.03.01 release document will provide instructions for uploading the csv file into PCGenesis

22.04.00

December Release

The December, 2022 release will focus on legislative changes:

- Federal tax withholding tables and FICA limits will change
- Affordable Care Act (ACA) changes
- PCGenesis supports both
 - 1099-MISC
 - 1099-NEC

22.04.00

December Release

The December, 2022 release will focus on legislative changes:

- We don't see any significant changes for W-2's
- PCGenesis will support any new requirements for ACA

22.04.00

December Release

Continue the migration to the **database**:

- Convert ACA data (ACA1095)
- Convert ACA dependent data (DEPENDS)

2023 and Beyond

Continue the migration to the database:

- Convert *Enhanced Substitute Pay and Employee Leave* system to the database

23.01.00

March Release

Enhanced Leave System database conversion:

- **PERDATA\LVSYS** System Parameters
- **PERDATA\LVADV** Advance Formulas
- **PERDATA\LVCLASS** Payroll Class Parameters
- **PERDATA\LVHIST** Enhanced Leave History
- **PERDATA\LVINPUT** Current Leave Input File
- **PERDATA\LGROSDAT** Current Leave Gross Data

23.02.00 – 23.04.00

- Start converting the “minor” system data files to the database
- Convert the miscellaneous files and supporting files to the database
- Migration of all PCGenesis data to **SQL Server Database**

23.02.00 – 23.04.00

CPI

- CPI Control File
- Salary Schedule File

23.02.00 – 23.04.00

Financial

- ASSET File
- Control Files
 - DE 0046
 - DE 0106
 - DE 0396
 - Object File
- BANK Micr File
- Signature File

23.02.00 – 23.04.00

Payroll files

- SHBP Employee Change File (EMPCHG)
- System annuity definitions (ANNUITY)
- System deduction definitions (DEDS)
- GHI rates (BENEDED)
- Payroll setup files (DATEFL, DEDCTL)
- Description Files (DESC, DESCA)
- Payroll Schedule File (PAYS)
- TAXES File

PCGENESIS FUTURE

Converting PCGenesis to RDBMS

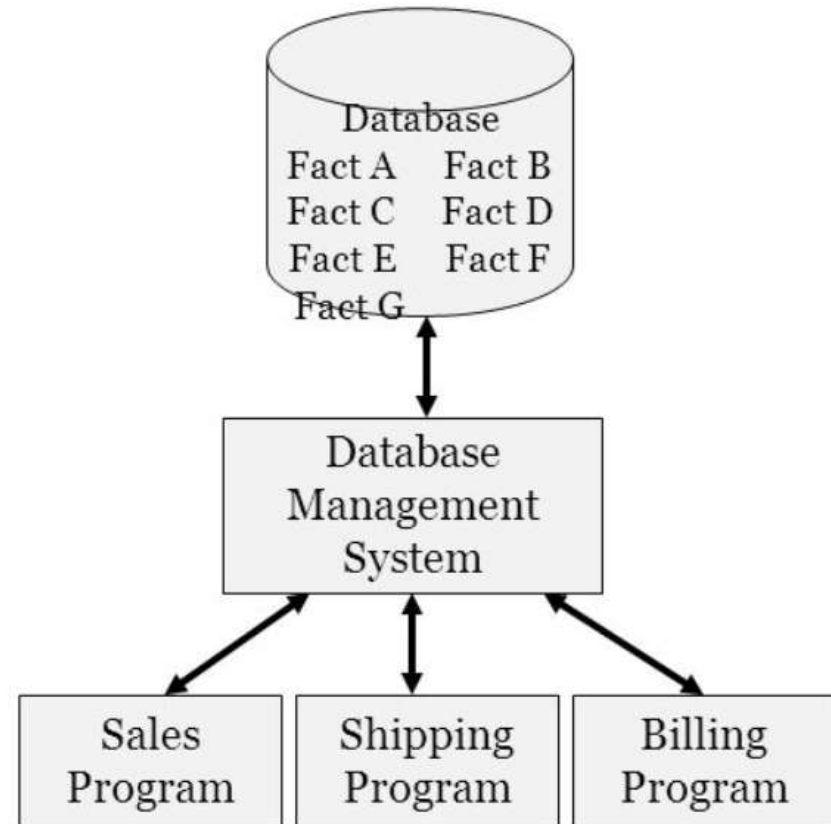
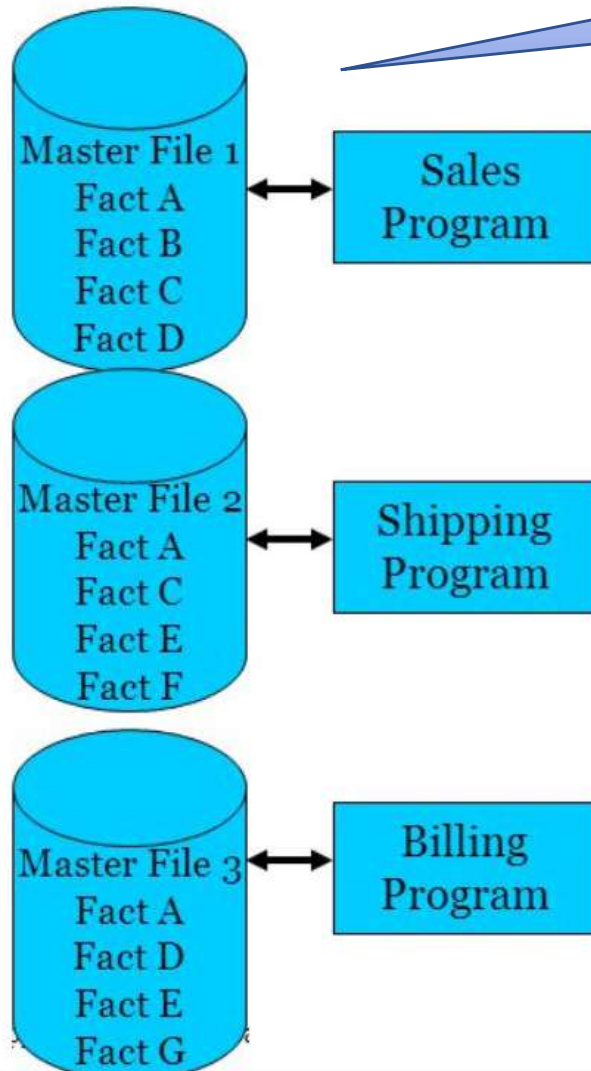
- Converting to a relational database is a very, very big project
- We're getting close to completion!
- During the conversion, major enhancements to PCGenesis will be limited
- Legislative requirements will always be addressed even during the conversion process

PCGENESIS FUTURE

Migration to Database Technology

FILE VS. DATABASES

At least 80+ individual files today



Combined into 1 database file tomorrow

PCGENESIS FUTURE

Converting PCGenesis to RDBMS

This is all great news for
PCGenesis!!

Agenda

- Introduction
- Migration to Database Technology
- What's Next
- **Full Transaction Processing**
- PCGenesis Databases
- Getting Ready for 2023 GHI
- PCGenesis Broadcast E-mail List



PCGENESIS FUTURE

Migration to Database Technology

- Full financial transaction processing was completed with release 21.03.00!!!
- What does full transaction processing mean for you?

PCGENESIS FUTURE

Migration to Database Technology

Help desk statistics for Fiscal Year Closing 2021 versus 2022...

➤ Out of Balance

- 2021 – 14 DTICKETS
- 2022 – 3 DTICKETS

PCGENESIS FUTURE

Migration to Database Technology

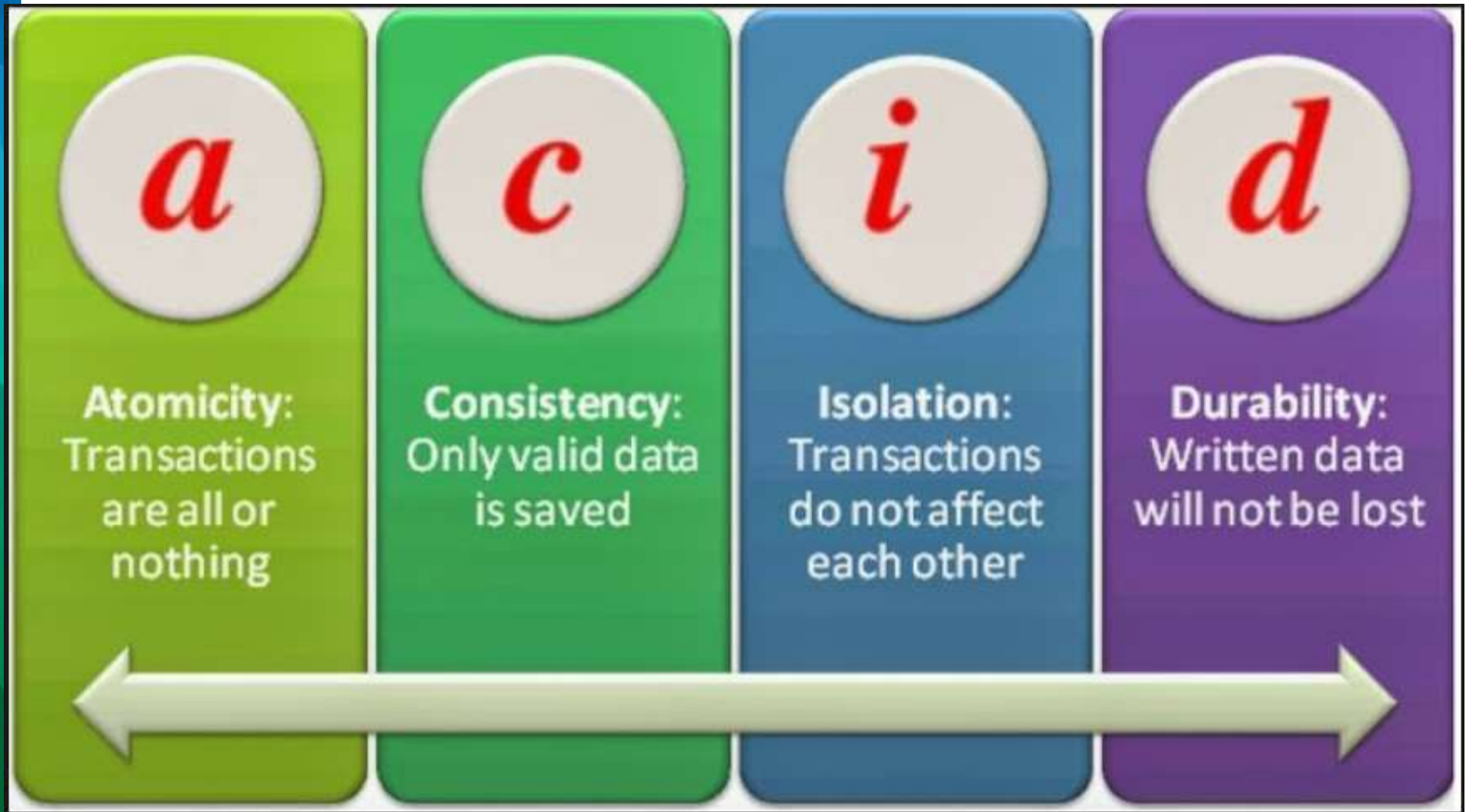
Rhonda Metts in Financial Review

“I don’t think that I have had any out of balance issues since last year’s closing. Whatever y’all did seems to have eliminated the partial postings. Yay!!”

PCGENESIS FUTURE

Migration to Database Technology

Transaction Processing: (ACID)



PCGENESIS FUTURE

Migration to Database Technology

What does this mean??

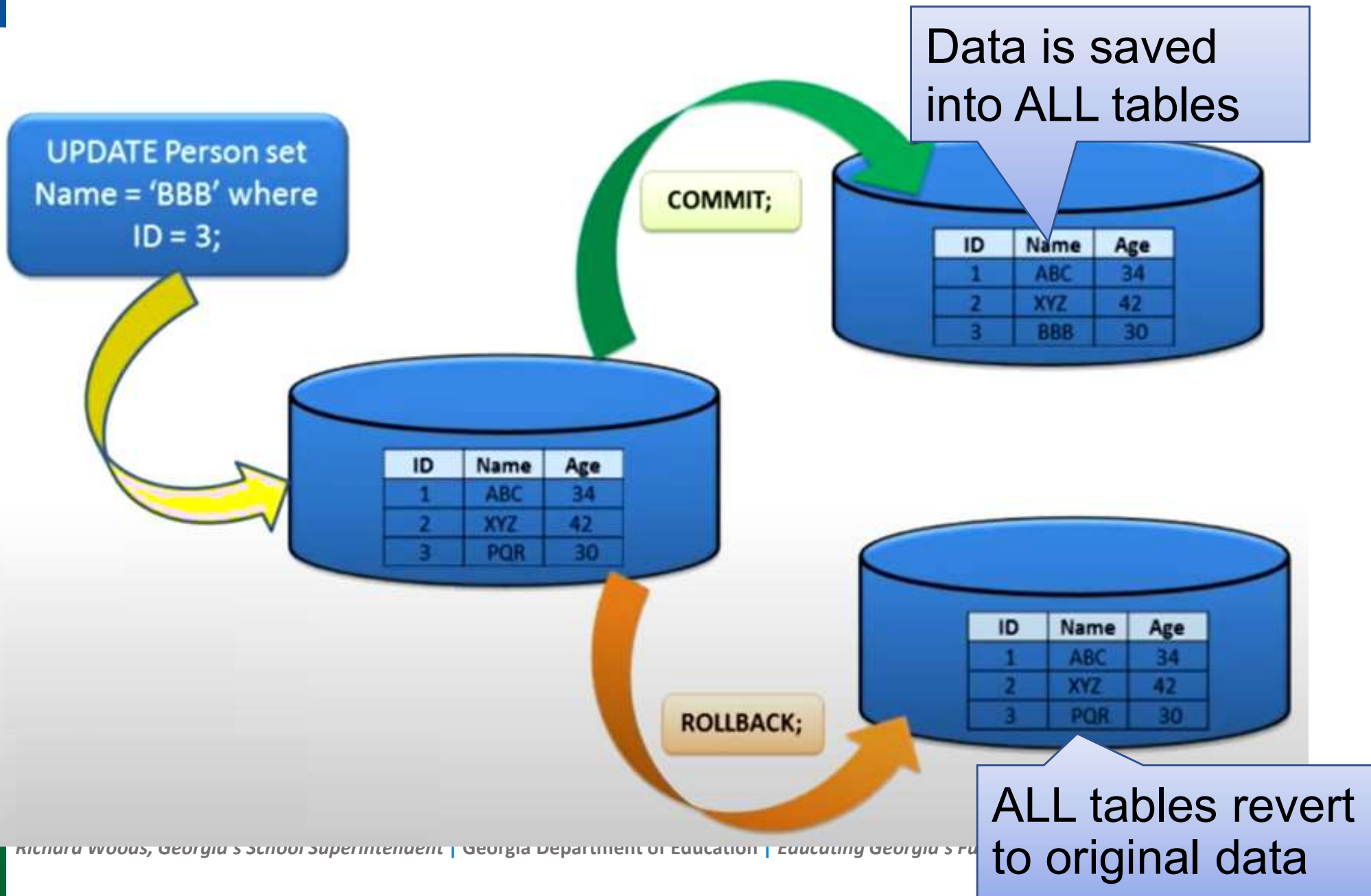
- Data repairs should be a thing of the past
- Posting a financial transaction is “all or nothing”

Transaction Processing

If a problem occurs during posting, for example, a power outage.....

- All updates will roll back
- We won't end up missing the individual claim, journal, or receipt on file, but having the entry on the General Ledger

Transaction Processing

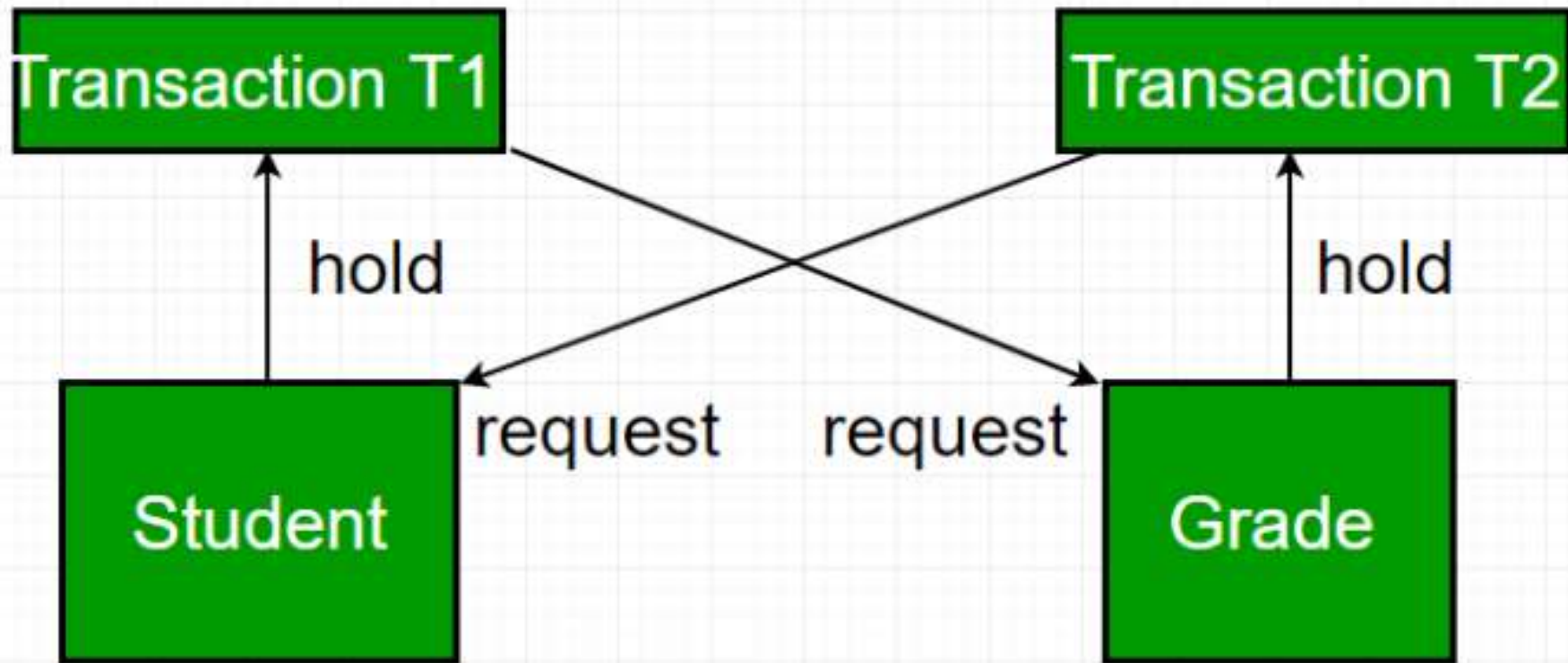


Single Threaded Financial Transactions

SQL Critical Deadlock errors

- Two users post at the same time
- Each user is waiting for a record the other user controls
- This may have been the root cause of the “corrupt file” errors in the old days

Single Threaded Financial Transactions



Deadlock in DBMS

Single Threaded Financial Transactions

Transaction_Gatekeeper table

- One record which is used as a “gatekeeper” to allow only ONE PCGenesis session to post at a time.
- The gatekeeper record locks when the first session starts to post a financial transaction.
- If the gatekeeper record is already locked, the second posting process must wait, while the first posting process finishes.

Single Threaded Financial Transactions

PCG Dist=8991 Rel=21.03.00 10/06/2021 DOD 003 SV C:\SQLSYS C:\SECOND YELLOW (Not Respon... - [X]

Expense (Claim) Entry Vendor Number: 5831 BA7TLEY, RU7TY EXP0100
 2509 MAIN STREET Part 1099:N

Purchase order: SMITH, GA 33333
 Description: CONTRACT TO PAVE PARKING LOT Vendor ref: I 2233555
 A/P blnc: 421

Disc dt: Disc amt: Claim post dt: 10/06/2021 Claim amt: 10111.00
 Amount 1099

Yr	Fnd	F	Prgm	Funct	Objct	Fcty	B	Addt'l	
1	22	100	1021	1000	61000	195	1	1	10111.00
2	00								
3	00								
4	00								
5	00								
6	00								
7	00								
8	00								
9	00								
10	00								
11	00								
12	00								
13	00								
14	00								
15	00								
16	00								
17	00								
18	00								
19	00								
20	00								

****CAUTION** Highlighted Amount(s) OVER-EXPENDED Budgeted Balance(s)**
 Waiting for another user's update process to complete before starting this update

ENTER [X] F12 F15
 F16 [X] F28

21.03.00

“Waiting for another user’s update process to complete”

- Wait!
- Don’t ‘X’ out!

Single Threaded Financial Transactions

Transaction Tracking Tables:

PCGenesis keeps permanent records of all financial and payroll transactions

- The user ID
- The name of the process
- Starting time
- Ending time
- Employee number for payroll transactions

Transaction Processing

Transaction_Gatekeeper_Log

- Retains a record of every **financial** transaction executed in the system

	TranLogID	Transaction_Log_user	Transaction_Log_process	Transaction_Log_Start_Datetime	Transaction_Log_description	Transaction_Log_End_Datetime
94	24244	KCN	JE_Post	2022-10-07 18:11:06.0628812	Completed Successfully.	2022-10-07 18:11:06.1566427
95	24243	KCN	JE_Post	2022-10-07 18:09:58.3579460	Completed Successfully.	2022-10-07 18:09:58.4360804
96	24242	KCN	JE_Post	2022-10-07 18:08:21.6929226	Completed Successfully.	2022-10-07 18:08:21.7711200
97	24241	KCN	JE_Post	2022-10-07 18:06:36.1753734	Completed Successfully.	2022-10-07 18:06:36.3003883
98	24240	KCN	JE_Post	2022-10-07 17:51:04.6638115	Completed Successfully.	2022-10-07 17:51:04.7888261
99	24239	CSA	JE_Post	2022-10-07 17:34:02.7979096	Completed Successfully.	2022-10-07 17:34:03.2510839
100	24238	CSA	Rev_Acct_Add_or_Update	2022-10-07 17:33:49.3188472	Completed Successfully.	2022-10-07 17:33:49.3344748
101	24237	CSA	Rev_Acct_Add_or_Update	2022-10-07 17:33:34.9247591	Completed Successfully.	2022-10-07 17:33:34.9560130
102	24236	CSA	Add_Updt_GL_Acct_Post	2022-10-07 17:32:52.8411359	Completed Successfully.	2022-10-07 17:32:52.9192703

Transaction Processing

Transaction_EmpNo_Gatekeeper_Log

- Retains a record of every payroll transaction executed in the system

	TranEmpLogID	Transaction_EmpNo	Transaction_EmpLog_user	Transaction_EmpLog_process	Transaction_EmpLog_Start_Datetime	Transaction_EmpLog_description
10	2203	73156	RSS	CPICM100_Update_Cert_Data 73156	2022-10-07 15:02:15.4382841	Completed Successfully.
11	2202	53108	RSS	CPICM100_Update_Cert_Data 53108	2022-10-07 14:58:56.4791382	Completed Successfully.
12	2201	53108	RSS	CPICM100_Update_Cert_Data 53108	2022-10-07 14:58:47.8756870	Completed Successfully.
13	2200	2543	RSS	CPICM100_Update_Cert_Data 2543	2022-10-07 14:44:49.1854372	Completed Successfully.
14	2199	2543	RSS	CPICM100_Update_Cert_Data 2543	2022-10-07 14:36:32.4666237	Completed Successfully.
15	2198	0	ARM	CPICM010_Update_Cert_Type	2022-10-07 08:20:33.5759553	Completed Successfully.
16	2197	0	ARM	CPICM300_CPI_Rollover	2022-10-07 07:18:30.4294938	Completed Successfully.
17	2196	54676	JML	PAY08_Withholding_Update 54676	2022-10-03 10:41:44.1575205	Completed Successfully.
18	2195	0	JML	Update_Earnings_History	2022-09-30 07:31:05.0218798	Completed Successfully.

Payroll Change Log Feature

All additions, changes and deletions to the payroll file will be recorded to a change log that can be reported on.

For example, say you had the following scenario:

1. A new employee 5007 is added to the payroll file by user **HFF** on **2021-10-22** at **12:48:42.403**.
2. User **GGG** updates 4 fields: **Contract_Gross** , **Contract_BiWeekly_Amount** , **State_Annual_Amount** and **Local_Annual_Amount** on employee record 5007 on **2021-10-22** at **13:09:08.563**.
3. User **MMM** updates: **Emp_Status** and **Primary_Work_Location_Site** on **2021-10-25** **13:10:28.827**.

**Employee Number
5007**

**SUMMARY
REPORT**

Last_updated_by	last_updated_date	Log_Type	empno	Emp_name
HFF	2021-10-22 12:48:42.360	Record added	5007	KEVIN JONESWORTH
GGG	2021-10-22 13:09:08.543	Record Updated	5007	KEVIN JONESWORTH
MMM	2021-10-25 13:10:28.377	Record Updated	5007	KEVIN JONESWORTH
GGG	2021-10-26 14:05:25.010	Record Updated	5007	KEVIN JONESWORTH

DETAIL REPORT

Action_Date_time	userID	EmpNo	Action_Type	Item	New_value	Old_value
2021-10-22 12:48:42.403	HFF	5007	Record added	=====	=====	=====
2021-10-22 12:48:42.403	HFF	5007	Record added	EmpNO	5007	
2021-10-22 12:48:42.403	HFF	5007	Record added	Emp_Name	KEVIN JONESWORTH	
2021-10-22 12:48:42.403	HFF	5007	Record added	Emp_Status	T	
2021-10-22 12:48:42.403	HFF	5007	Record added	Social_Security_Number	777999444	
2021-10-22 12:48:42.403	HFF	5007	Record added	Name_Last	JONESWORTH	
2021-10-22 12:48:42.403	HFF	5007	Record added	Name_First	KEVIN	
2021-10-22 12:48:42.403	HFF	5007	Record added	Pay_Location_Site	196	
2021-10-22 12:48:42.403	HFF	5007	Record added	Primary_Work_Location_Site	8010	
2021-10-22 12:48:42.403	HFF	5007	Record added	Address_Line1	654 Kensington ST	
2021-10-22 12:48:42.403	HFF	5007	Record added	Address_City_State	SMITH, GA	
2021-10-22 12:48:42.403	HFF	5007	Record added	Address_City	BLUE CITY	
2021-10-22 12:48:42.403	HFF	5007	Record added	Address_State	GA	
2021-10-22 12:48:42.403	HFF	5007	Record added	Contract_Gross	0.00	
2021-10-22 12:48:42.403	HFF	5007	Record added	Contract_BiWeekly_Amount	0.00	
2021-10-22 12:48:42.403	HFF	5007	Record added	State_Annual_Amount	0.00	
2021-10-22 12:48:42.403	HFF	5007	Record added	Local_Annual_Amount	0.00	
2021-10-22 12:48:42.403	HFF	5007	Record added	Other_Annual_Amount	0.00	
2021-10-22 13:09:08.563	GGG	5007	Record Updated	=====	=====	=====
2021-10-22 13:09:08.563	GGG	5007	Record Updated	Contract_Gross	70000.00	0.00
2021-10-22 13:09:08.563	GGG	5007	Record Updated	Contract_BiWeekly_Amount	7000.00	0.00
2021-10-22 13:09:08.563	GGG	5007	Record Updated	State_Annual_Amount	70000.00	0.00
2021-10-22 13:09:08.563	GGG	5007	Record Updated	Local_Annual_Amount	7000.00	0.00
2021-10-25 13:10:28.827	MMM	5007	Record Updated	=====	=====	=====
2021-10-25 13:10:28.827	MMM	5007	Record Updated	Emp_Status	A	T
2021-10-25 13:10:28.827	MMM	5007	Record Updated	Primary_Work_Location_Site	196	8010
2021-10-26 14:05:25.410	GGG	5007	Record Updated	=====	=====	=====
2021-10-26 14:05:25.410	GGG	5007	Record Updated	Name_Middle	JAMES	
2021-10-26 14:05:25.410	GGG	5007	Record Updated	Pay_Location_Site	195	196
2021-10-26 14:05:25.410	GGG	5007	Record Updated	Primary_Work_Location_Site	195	196
2021-10-26 14:05:25.410	GGG	5007	Record Updated	Address_City	LAMPING	BLUE CITY
2021-10-26 14:05:25.410	GGG	5007	Record Updated	GHI_Eligible_Flag	Y	N
2021-10-26 14:05:25.410	GGG	5007	Record Updated	GHI_1st_Day_Work_Date	05/24/2021	
2021-10-26 14:05:25.410	GGG	5007	Record Updated	GHI_Coverage_Effective_Date	09/30/2021	

Payroll Change Log Feature

user GGG

SUMMARY REPORT

Last_updated_by	last_updated_date	Log_Type	empno	Emp_name
GGG	2021-10-22 13:09:08.130	Record Updated	5006	MARLA MILTON
GGG	2021-10-22 13:09:08.543	Record Updated	5007	KEVIN JONESWORTH
GGG	2021-10-26 14:05:25.010	Record Updated	5007	KEVIN JONESWORTH

DETAIL REPORT

Action_Date_time	userID	EmpNo	Action_Type	Item	New_value	Old_value
2021-10-22 13:09:08.537	GGG	5006	Record Updated	=====	=====	=====
2021-10-22 13:09:08.537	GGG	5006	Record Updated	Address_Line1	2 EAVES DRIVE	270 Burlee ST
2021-10-22 13:09:08.537	GGG	5006	Record Updated	Contract_Gross	60000.00	0.00
2021-10-22 13:09:08.537	GGG	5006	Record Updated	Contract_BiWeekly_Amount	6000.10	0.00
2021-10-22 13:09:08.537	GGG	5006	Record Updated	State_Annual_Amount	60000.00	0.00
2021-10-22 13:09:08.537	GGG	5006	Record Updated	Local_Annual_Amount	5900.50	0.00
2021-10-22 13:09:08.563	GGG	5007	Record Updated	=====	=====	=====
2021-10-22 13:09:08.563	GGG	5007	Record Updated	Contract_Gross	70000.00	0.00
2021-10-22 13:09:08.563	GGG	5007	Record Updated	Contract_BiWeekly_Amount	7000.00	0.00
2021-10-22 13:09:08.563	GGG	5007	Record Updated	State_Annual_Amount	70000.00	0.00
2021-10-22 13:09:08.563	GGG	5007	Record Updated	Local_Annual_Amount	7000.00	0.00
2021-10-26 14:05:25.410	GGG	5007	Record Updated	=====	=====	=====
2021-10-26 14:05:25.410	GGG	5007	Record Updated	Name_Middle	JAMES	
2021-10-26 14:05:25.410	GGG	5007	Record Updated	Pay_Location_Site	195	196
2021-10-26 14:05:25.410	GGG	5007	Record Updated	Primary_Work_Location_Site	195	196
2021-10-26 14:05:25.410	GGG	5007	Record Updated	Address_City	LAMPING	BLUE CITY
2021-10-26 14:05:25.410	GGG	5007	Record Updated	GHI_Eligible_Flag	Y	N
2021-10-26 14:05:25.410	GGG	5007	Record Updated	GHI_1st_Day_Work_Date	05/24/2021	
2021-10-26 14:05:25.410	GGG	5007	Record Updated	GHI_Coverage_Effective_Date	09/30/2021	

Changes made after

2021-10-22 12:59:44.613

**SUMMARY
REPORT**

Last_updated_by	last_updated_date	Log_Type	empno	Emp_name
RTR	2021-10-22 12:59:44.613	Record Updated	5008	DENNIS DUFFIE
GGG	2021-10-22 13:09:08.130	Record Updated	5006	MARLA MILTON
GGG	2021-10-22 13:09:08.543	Record Updated	5007	KEVIN JONESWORTH
TTT	2021-10-22 13:09:08.567	Record Updated	5008	DENNIS DUFFIE
MMM	2021-10-22 13:44:03.423	Record Updated	5008	DENNIS DUFFIE
MMM	2021-10-25 13:10:28.377	Record Updated	5007	KEVIN JONESWORTH
GGG	2021-10-26 14:05:25.010	Record Updated	5007	KEVIN JONESWORTH

DETAIL REPORT

Action_Date_time	userID	EmpNo	Action_Type	Item	New_value	Old_value
2021-10-22 12:59:45.083	RTR	5008	Record Updated	=====	=====	=====
2021-10-22 12:59:45.083	RTR	5008	Record Updated	Telephone_Number	4047773333	4042223333
2021-10-22 13:09:08.537	GGG	5006	Record Updated	=====	=====	=====
2021-10-22 13:09:08.537	GGG	5006	Record Updated	Address_Line1	2 EAVES DRIVE	270 Burlee ST
2021-10-22 13:09:08.537	GGG	5006	Record Updated	Contract_Gross	60000.00	0.00
2021-10-22 13:09:08.537	GGG	5006	Record Updated	Contract_BiWeekly_Amount	6000.10	0.00
2021-10-22 13:09:08.537	GGG	5006	Record Updated	State_Annual_Amount	60000.00	0.00
2021-10-22 13:09:08.537	GGG	5006	Record Updated	Local_Annual_Amount	5900.50	0.00
2021-10-22 13:09:08.563	GGG	5007	Record Updated	=====	=====	=====
2021-10-22 13:09:08.563	GGG	5007	Record Updated	Contract_Gross	70000.00	0.00
2021-10-22 13:09:08.563	GGG	5007	Record Updated	Contract_BiWeekly_Amount	7000.00	0.00
2021-10-22 13:09:08.563	GGG	5007	Record Updated	State_Annual_Amount	70000.00	0.00
2021-10-22 13:09:08.563	GGG	5007	Record Updated	Local_Annual_Amount	7000.00	0.00
2021-10-22 13:09:08.590	TTT	5008	Record Updated	=====	=====	=====
2021-10-22 13:09:08.590	TTT	5008	Record Updated	Contract_Gross	54000.00	0.00
2021-10-22 13:09:08.590	TTT	5008	Record Updated	Contract_BiWeekly_Amount	51000.00	0.00
2021-10-22 13:09:08.590	TTT	5008	Record Updated	State_Annual_Amount	5000.00	0.00
2021-10-22 13:44:03.850	MMM	5008	Record Updated	=====	=====	=====
2021-10-22 13:44:03.850	MMM	5008	Record Updated	State_Annual_Amount	5200.00	5000.00
2021-10-25 13:10:28.827	MMM	5007	Record Updated	=====	=====	=====
2021-10-25 13:10:28.827	MMM	5007	Record Updated	Emp_Status	A	T
2021-10-25 13:10:28.827	MMM	5007	Record Updated	Primary_Work_Location_Site	196	8010
2021-10-26 14:05:25.410	GGG	5007	Record Updated	=====	=====	=====
2021-10-26 14:05:25.410	GGG	5007	Record Updated	Name_Middle	JAMES	
2021-10-26 14:05:25.410	GGG	5007	Record Updated	Pay_Location_Site	195	196
2021-10-26 14:05:25.410	GGG	5007	Record Updated	Primary_Work_Location_Site	195	196
2021-10-26 14:05:25.410	GGG	5007	Record Updated	Address_City	LAMPING	BLUE CITY
2021-10-26 14:05:25.410	GGG	5007	Record Updated	GHI_Eligible_Flag	Y	N
2021-10-26 14:05:25.410	GGG	5007	Record Updated	GHI_1st_Day_Work_Date	05/24/2021	
2021-10-26 14:05:25.410	GGG	5007	Record Updated	GHI_Coverage_Effective_Date	09/30/2021	

Login / Logout History

Did you know...

- On the first of each month, the scheduled reorganization task creates a recap report which is a listing of all user logon information for that month
- Creates the ***Detail for USERLIST Files*** report
- Lists the login and logout information for each user who accessed the PCGenesis system

Login / Logout History

Did you know...

- The ***Detail for USERLIST Files*** report is stored in the **K:\BACKUP\LI** directory for a period of one to two years
- File name: **Llyymm01.TXT**, where...
 - **yy** is the **year** the recap was created
 - **mm** is the **month** the recap was created

Login / Logout History

LI210902.TXT - Notepad

File Edit Format View Help

Date:		09/02/2021 01:01		Detail for USERLIST Files					
Program:		PRTULIST							
User	Date	Login	Logout	Module	SubSystem	ModTime	Message		
DOD 001	08/03/2021	07:02:15					Not Properly Closed		
DOD 002	08/03/2021	14:38:11	08/04/2021	10:22:44			Closed Next Day		
PCG 001	08/03/2021	07:02:04	08/04/2021	10:22:40			Closed Next Day		
DOD 001	08/04/2021	12:13:31		12:13:33					
DOD 002	08/04/2021	12:13:51					Not Properly Closed		
DOD 003	08/04/2021	13:31:37		14:06:38					
DOD 004	08/04/2021	14:06:56					Not Properly Closed		
DOD 005	08/04/2021	14:19:34					Not Properly Closed		
DOD 006	08/04/2021	14:56:59		15:13:53					
DOD 007	08/04/2021	15:14:36	08/05/2021	09:13:14			Closed Next Day		
DOE 001	08/04/2021	10:22:57		12:09:55					
PCG 001	08/04/2021	12:13:42					Not Properly Closed		
PCG 002	08/04/2021	15:14:08	08/05/2021	09:13:22			Closed Next Day		
DOD 001	08/05/2021	09:13:57					Not Properly Closed		
DOD 002	08/05/2021	10:37:20					Not Properly Closed		
DOD 003	08/05/2021	10:46:54					Not Properly Closed		
DOD 004	08/05/2021	11:06:10					Not Properly Closed		
DOD 005	08/05/2021	11:35:33					Not Properly Closed		
DOD 006	08/05/2021	11:41:25					Not Properly Closed		
DOD 007	08/05/2021	15:23:42	08/06/2021	10:48:10			Closed Next Day		
PCG 001	08/05/2021	09:13:46	08/06/2021	10:48:16			Closed Next Day		
DOD 001	08/06/2021	10:48:43					Not Properly Closed		
DOD 002	08/06/2021	13:25:21					Not Properly Closed		
DOD 003	08/06/2021	13:28:10					Not Properly Closed		
DOD 004	08/06/2021	13:28:57					Not Properly Closed		
DOD 005	08/06/2021	13:33:49		16:49:59					
PCG 001	08/06/2021	10:48:33		16:50:24					
DOD 001	08/09/2021	10:50:52					Not Properly Closed		
DOD 002	08/09/2021	12:21:13					Not Properly Closed		
DOD 003	08/09/2021	12:29:24					Not Properly Closed		
DOD 004	08/09/2021	12:32:10					Not Properly Closed		
DOD 005	08/09/2021	12:34:35					Not Properly Closed		
DOD 006	08/09/2021	12:48:26					Not Properly Closed		
DOD 007	08/09/2021	12:53:04					Not Properly Closed		
DOD 008	08/09/2021	13:01:27					Not Properly Closed		
DOD 009	08/09/2021	13:06:37					Not Properly Closed		

PCGENESIS FUTURE

Migration to Database Technology

How is database performance?

- Good news – we have a database expert working with our team!
- We have worked diligently to keep PCGenesis performance comparable to the old file technology
- Also good news... Our team will continue making changes to improve performance even more!

PCGENESIS FUTURE

Migration to Database Technology

How is database performance?

- Prior to 22.03.00 we discovered we had a bug when restoring FARDATAQ and/or PAYDATAQ tables
- Prior to 22.03.00, the restore of **FARQ/PAYQ schema** did not recreate the indices on the database tables
- This caused very, very slow system performance going forward.

PCGENESIS FUTURE

Migration to Database Technology

How is database performance?

- This issue only affected school districts that executed a restore of FARDATAQ and/or PAYDATAQ at some point prior to 22.03.00
- Those districts experienced extremely long processing times
 - For example, it was taking an hour or more to do a month end close
- This problem has been fixed!

PCGENESIS FUTURE

Database Integrity

“Reference Constraint”

- Enforcement of consistency standards on the PCGenesis data
- It is NOT possible to delete a general ledger, expense, or revenue account which is used in any other table in the system

Database Integrity “Reference Constraint”

- This means that an account cannot be deleted until all related data is archived
- An in-out journal (JE) that zeroes an account balance means that the user will NOT be able to delete the account
- Typically data is retained for at least 7 years

Database Integrity “Reference Constraint”

PCG Dist=8991 Rel=21.03.00 10/12/2021 DOD 007 SV C:\SQLSYS C:\SECOND YELLOW ACCT0100

Budget Update

Amounts entered are added to previous values
NOTE: To enter a credit amount use a minus (-) sign

Yr	Fnd	F	Prgm	Funct	Objct	Fcty	B	Addt'l	Tran Date	Beg Date	End Date
22	100		1021	1000	61600	195	1	5	10122021	7/01/2021	6/30/2022

Fund Balance Acct: 799 Status: A Adj. Budget .00 Orig. Budget .00
ENTER BUDGET ADJUST: _____

Enter Distribution by Month: Reason: CHANGE TO APPROPRIATION
Title: TECH BUDGET

Month	Amount
July	.00
August	.00
September	.00
October	.00
November	.00
December	.00
January	.00
February	.00
March	.00
April	.00
May	.00
June	.00
July	.00
August	.00
September	.00
October	.00
November	.00
December	.00

Error on Update

File name: FAR.ACCOUNT

Return code: -823

Message: This account is used in JE. Cannot delete.

OK

F28 to confirm delete F16 to re-enter

ENTER ✓	F1	F2	F3	F4	F5	F6	F7	F8	F9	F10	F11	F12	F13	F14	F15 🔍	21.03.00
F16 ←	🗑️											F28			F31	DE ation

Account can't be deleted, even though balance is zero

Database Integrity

“Reference Constraint”

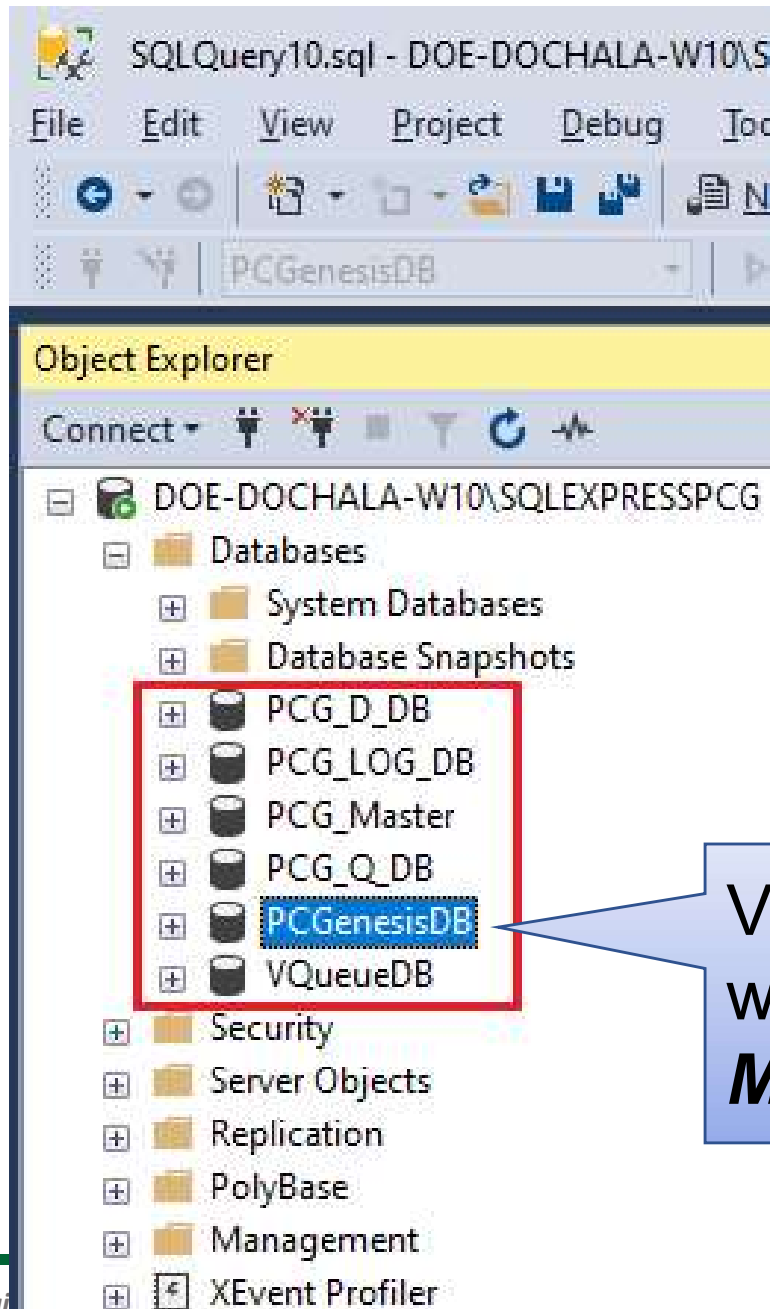
- Constraints also exist for bank codes
- As data is converted into the PCGenesis database, bank codes have been added
- The banks are used somewhere in PCGenesis: in a claim, a receipt, a journal, a vendor check, or wire transfer
- Bank codes with a reference constraint cannot be deleted until all related data is removed first, usually during an archive operation

Agenda

- Introduction
- Migration to Database Technology
- What's Next
- Full Transaction Processing
- **PCGenesis Databases**
- Getting Ready for 2023 GHI
- PCGenesis Broadcast E-mail List

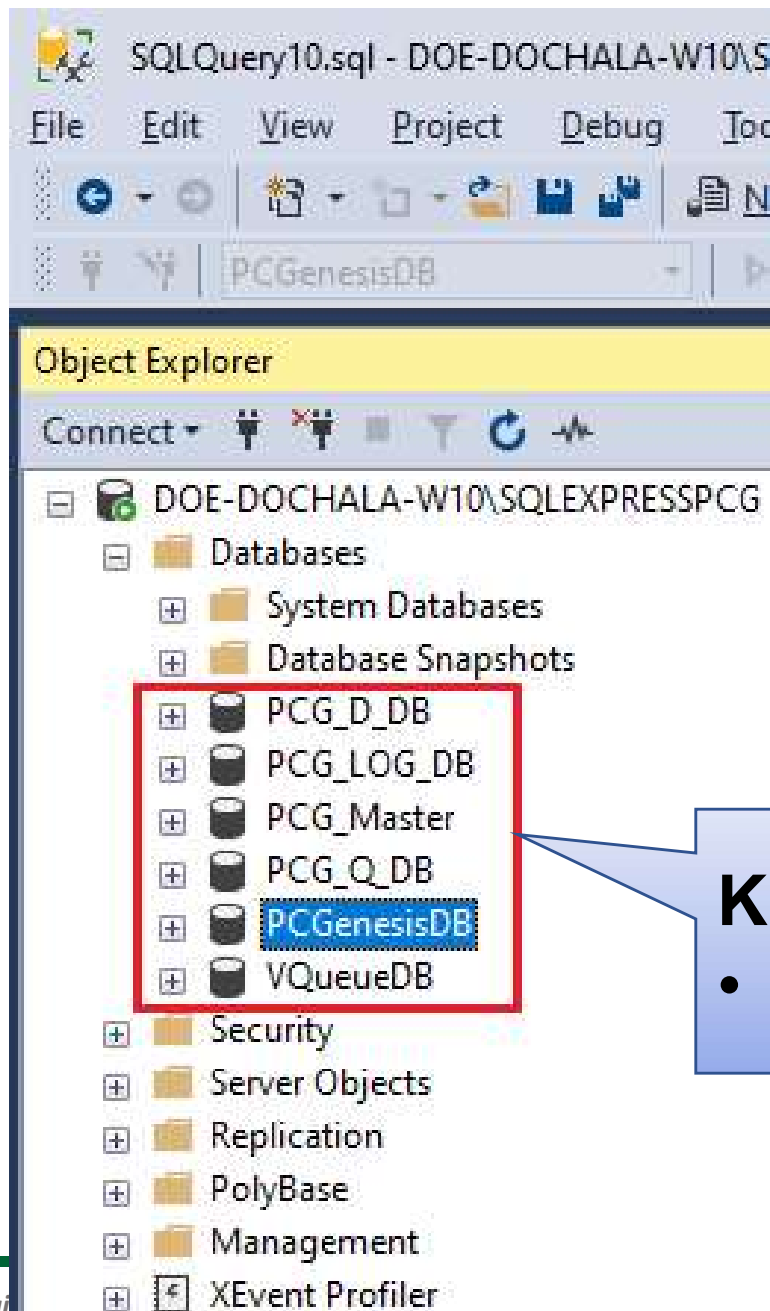


PCGenesis Databases



View of databases from within **Microsoft SQL Server Management Studio**

PCGenesis Databases



K:\PCGSQldb

- Location of database

PCGenesis Databases

1) PCGenesisDB

- PCGenesis financial and payroll production data
- All of the important PCG data is in this database!

PCGenesis Databases

2) PCG_Master

- PCGenesis backup and restore logs
- Log information
- Needed if help desk needs to troubleshoot problems with your IT staff

PCGenesis Databases

3) PCG_Q_DB

- Corresponds to **PAYDATAQ** or **FARDATAQ**
- Backup of **PAYDATA** just before ***Calculate Payroll & Update YTD (Final)*** (F4)
- Backup of **FARDATA** just before updating budget files with vendor check information (F5)

PCGenesis Databases

4) PCG_D_DB

- Corresponds to **PAYDATAD**
- Backup of **PAYDATA** after printing **payroll checks**, but before printing **payroll direct deposits** (F2, F3, F5)

PCGenesis Databases

- Think of these databases as **restore points**
- Think of these the same way you think of **PAYDATAQ, FARDATAQ, PAYDATAD**, etc
 - PGG_Q_DB
 - PCG_D_DB

PCGenesis Databases

5) PCG_LOG_DB

- Contains a log of changes to
 - FAR.Bank_File
 - PAY.PAYROLL

PCGenesis Databases

6) VQueueDB

- Contains the *VerraDyne Print Manager* associated tables and data

PCGENESIS FUTURE

Questions?

Agenda

- Introduction
- Migration to Database Technology
- What's Next
- Full Transaction Processing
- PCGenesis Databases
- **Getting Ready for 2023 GHI**
- PCGenesis Broadcast E-mail List



New GHI Fields

GHI E-mail Preference:

- Designates whether the employee prefers to send their work e-mail address or their personal e-mail address to the State Health Benefits Program (SHBP)
- Valid values: ‘P’ for personal e-mail
 ‘W’ for work e-mail

Personal E-mail Address:

- The employee’s personal e-mail address

Work E-mail Address:

- The employee’s work e-mail address

New GHI Fields

Add New Employee

PCG Dist=8991 Rel=22.03.00 10/12/2022 DFO 002 SV K:\SYSTEM K:\SECOND WHITE

PAY01

Add New Employee

Status A -- Active HUDDLE, DEBRA H.

Emp. no. 33333 Pay Loc 101 Location 000101 Class 10 STAFF DEVELOP-SUBS

Sex Code F Work Loc 101 Location 000101 Job 2 CLASSROOM TEACHERS

Mar Stat S SSN 345 67 8901 EEO-5 Job 000 Undefined

Ethnic 2 WHITE

EEO-5 and CPI Ethnic/Race:
Hispanic/Latino Ethnicity?
 Yes No

Race (Select all that apply)
 Yes No Am Indian Alaskan
 Yes No Black
 Yes No White
 Yes No Asian
 Yes No Hawaiian Pacific

NAME First DEBRA Middle H.
Last HUDDLE Suffix _____ Prefix MS.

Address 1 WEST FIRST STREET Certificate Type _____
Address L2 APARTMENT 12 CS1 Job (from CPI) 000
City/State ATLANTA, GA Include on CPI ? Y
Zip Code 30000 County 000 Sick Bank ? N
Phone (444)555-6666 Substitute rank _____
Cell phone ()000-0000 Hours Per Day _____

Birth Date 11/01/1961 GHI Eligible ? Y Participate in GHI ? Y
Hire Date 1/01/2012 GHI BOE Trans? Y GHI Option B6 ANTHEM HMO
Rehire Date _____ GHI 1st Day Wrk 1/01/2012 GHI Tier 10 SINGLE
Term Date _____ GHI Coverage Start 2/01/2012 GHI Ded Cd 8
Term Reason _____ GHI Change Code NEMP

GHI Email Pref (W or P) P
Employee work e-mail: DHUDDLE@SMITHSCHOOLS.EDU
Employee personal e-mail: DHUDDLE@GMAIL.COM

Validations passed. Check screen 2 or save your changes.

22.03.00

ENTER ✓ F1 F2 F3 F4 F5 F6 F7 F8 F9 F10 F11 F12 F15 F16 F17 F18 Help

New GHI Fields

Update/Display Emergency Data

PCG Dist=8991 Rel=22.03.00 10/12/2022 DFO 002 SV K:\SYSTEM K:\SECOND WHITE PER02

Update/Display Emergency Data

Employee: 33333 HUDDLE, DEBRA H. Spouse: _____

Next of kin: _____ Relationship _____
Phone: ___ 000 0000

Emergency: _____ Relationship _____
Phone: ___ 000 0000

Doctor: _____ Phone: ___ 000 0000

Comments: _____

Employee work e-mail: DHUDDLE@SMITHSCHOOLS.EDU

Employee personal e-mail: DHUDDLE@GMAIL.COM

**Emergency Data is on the Personnel System Menu
F3, F1, F5**

Mode changed to update

ENTER = Validate, F8 = Update Record, F16 = Exit without Changes

ENTER ✓	F1 ▶	F2 ◀	F3 🖨	F4 📄	F5 ⏴	F6 ⏵	F7 ⏴	F8 📁	F9 🔄	F10 📏	F11 ▶	F12 ◀		F15 🔍
F16 ◀	F17 📄	F18 🗑				Per	ACA	Depts	Emer	Edu	Help			

22.02.00

Getting Ready for 2023 GHI

- GHI options B1, B2, B3, B6, H1, H2, and K1 are the same
- GHI tiers 10, 40, 90, 91, 94 – 97 are the same.
- Many GHI premium rates have changed for 2023.

Getting Ready for 2023 GHI

PCG Dist=8991 Rel=13.03.00 11/04/2013 DOD 001 SV C:\DEVSY S C:\SECOND GREEN

Display/Update Personnel Data PAY02

Status A -- Active AB3EU, ET3AN
 Emp. no. 88942 Pay Loc 302 Location 000302 Class 14 FOOD SERVICE
 Sex Code E Work Loc 302 Location 000302 Job 114 FOOD SERVICE
 Mar Stat M SSN 999 08 8942 EEO-5 Job A16 Service Worker
 EEO-5 Ethnic 2 WHITE

NAME First ET3AN Middle _____
 Last AB3EU Suffix _____ Prefix _____

Address 2072 MAIN STREET Certificate Type B0
 Address L2 _____ CS1 Job (from CPI) 410
 City/State SMITH, GA Include on CPI ? Y

Hispanic/Latino Ethnicity? Yes No
 Race (Select all that apply)
 Yes No Am Indian Alaskan
 Yes No Black
 Yes No White
 Yes No Asian
 Yes No Hawai

5.000

TRS DOE Paid ERCON ?
 Health ins flag Y
 Participate in CPI ? Y
 GHI Option B1 BCBS GOLD
 GHI Tier 90 EESP
 GHI Ded Cd 8
 s, Phone, etc.

ding Code 0 Amt/% .00
 ding Code 0 Amt/% .00

13.03.00

Help Adj FICA Gar

PCG Select GHI Code

Opt	Tier	Long Description	Short Desc
08		TRICARE SUPPLEMENT	TRISUP
B1		BCBS GOLD	BCBS GOLD
B2		BCBS SILVER	BCBS SILVER
B3		BCBS BRONZE	BCBS BRONZE
B6		BCBS HMO	BCBS HMO
H1		UHC HMO	UHC HMO
H2		UHC HDHP	UHC HDHP
K1		KAISER HMO	KAISER HMO
NC		NO COVERAGE OR COVERAGE WAIVED	WAIVED
NE		NOT ELIGIBLE FOR COVERAGE	NOT ELIGIBLE

Done Cancel

GHI Option from Benefit File

Getting Ready for 2023 GHI

PCG Dist=8991 Rel=13.03.00 11/04/2013 DOD 001 SV C:\DEV5YS C:\SECOND GREEN

Display/Update Personnel Data PAY02

Status A -- Active AB3EU, ET3AN

Emp. no. 88942 Pay Loc 302 Location 000302 Class 14 FOOD SERVICE

Sex Code F Work Loc 302 Location 000302 Job 114 FOOD SERVICE

Mar Stat M SSN 999 08 8942 EE0-5 Job A16 Service Worker

EE0-5 Ethnic 2 WHITE

NAME First ET3AN Middle _____

Last AB3EU Suffix _____ Prefix _____

Address 2072 MAIN STREET Certificate Type B0

Address L2 _____ CS1 Job (from CPI) 410

City/State SMITH, GA Include on CPI ? Y

Zip Code 33333 County 160 Sick Bank ? N

Phone (999)555-1058 Out of State Substitute rank _____

Hispanic/Latino Ethnicity? Yes No

Race (Select all that apply)

Yes No Am Indian Alaskan

Yes No Black

Yes No White

Yes No Asian

Yes No Hawai

TRC DOE Paid ERCON ? _____

Health ins flag Y

Participate in GHI ? Y

GHI Option B1 BCP GOLD

GHI Tier 90 EESP

GHI Ded Cd 8

ss, Phone, etc.

lding Code 0 Amt/% .00

lding Code 0 Amt/% .00

13.03.00

Help Adj FICA Gar

PCG Select GHI Code

Opt	Tier	Long Description	Short Desc
B1	10	SINGLE COVERAGE	SINGLE
B1	40	SINGLE COVERAGE TOBACCO SURCHARGE	SINGLE/T
B1	90	EMPLOYEE & SPOUSE	EESP
B1	91	EMPLOYEE & SPOUSE/TOBACCO SURCHARGE	EESP/T
B1	94	EMPLOYEE & CHILD(REN)	EECH
B1	95	EMPL & CHILD(REN)/TOBACCO SURCHARGE	EECH/T
B1	96	EMPLOYEE & SPOUSE & CHILD(REN)	FAMILY
B1	97	EMPL & SPOUSE & CHILD/TOBACCO SURCHAR	FAMILY/T

Done Cancel

GHI Tier from Benefit File

Getting Ready for 2023 GHI

How to Install 2023 GHI

- 1) Install PCGenesis Release 22.03.01. There will be instructions on how to upload the new 2023 GHI premium amounts into the Benefit Plan/Option/Tier Maintenance File.
- 2) Download the DCH open enrollment file.
- 3) Import State Health Options & Tiers from DCH File.
- 4) Set State Health Deduction Amount For Active Employees.

Getting Ready for 2023 GHI

How to Install Release 22.03.01

```
PCG Dist=6661 Rel=22.02.00 10/12/2022 DOE 001 C:\DEVSYS C:\SECOND CYAN
Identify Benefit Plan/Option/Tier Premium Data Import File from Excel
PAYPI280

Enter the import file path and name (e.g. C:\BENEDAT\SHBPCCYYRATES.CSU)
or F10 to Browse for file

K:\INSTAL\GHIRATES2023.CSU

Enter = continue or F16 = Exit
17.01.00
```

Getting Ready for 2023 GHI

How to Install Release 22.03.01

```
PCG Dist=8991 Rel=20.03.00 11/05/2020 PCG 001 SV C:\SQLSYS C:\SECOND WHITE
PAYPI280

No errors in Benefit Plan/Option/Tier Premium Import File.

Press enter to load Benefit Plan/Option/Tier Premium Import File.

Press F16 to STOP Process

Press ENTER to process or F16 to exit program 17.01.00
```


Getting Ready for 2023 GHI

How to Install Release 22.03.01

PCG Dist=6661 Rel=22.02.00 10/12/2022 DOE 001 C:\DEVSY S C:\SECOND CYAN PAY27

Print Benefit Plan Option Tier File

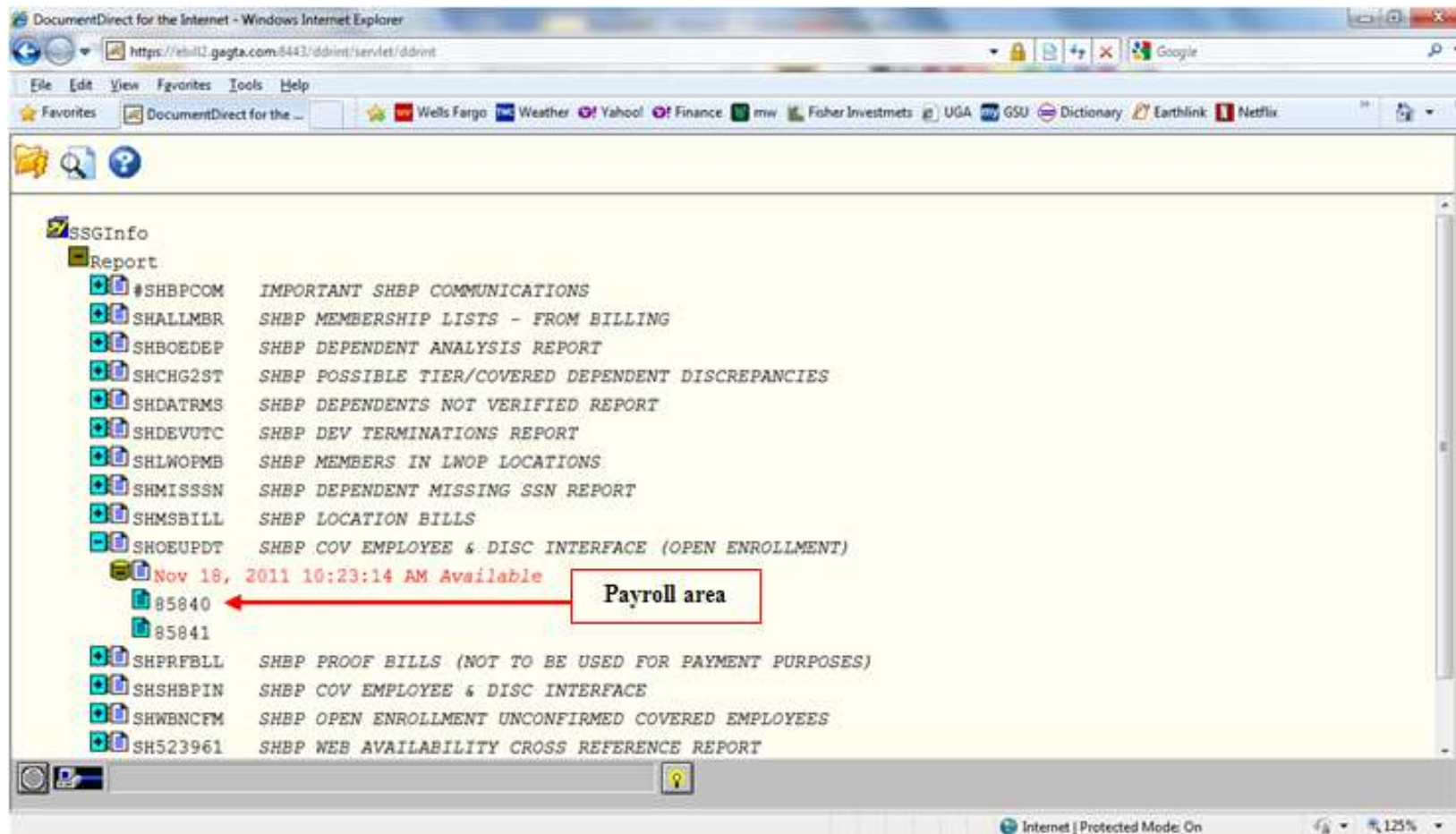
Report option: **Employee premium rates**
 Employer contribution amounts

Print rates in effect from: 1/01/2023 To: 12/31/2023

ENTER-Continue F16-Exit 12.03.00

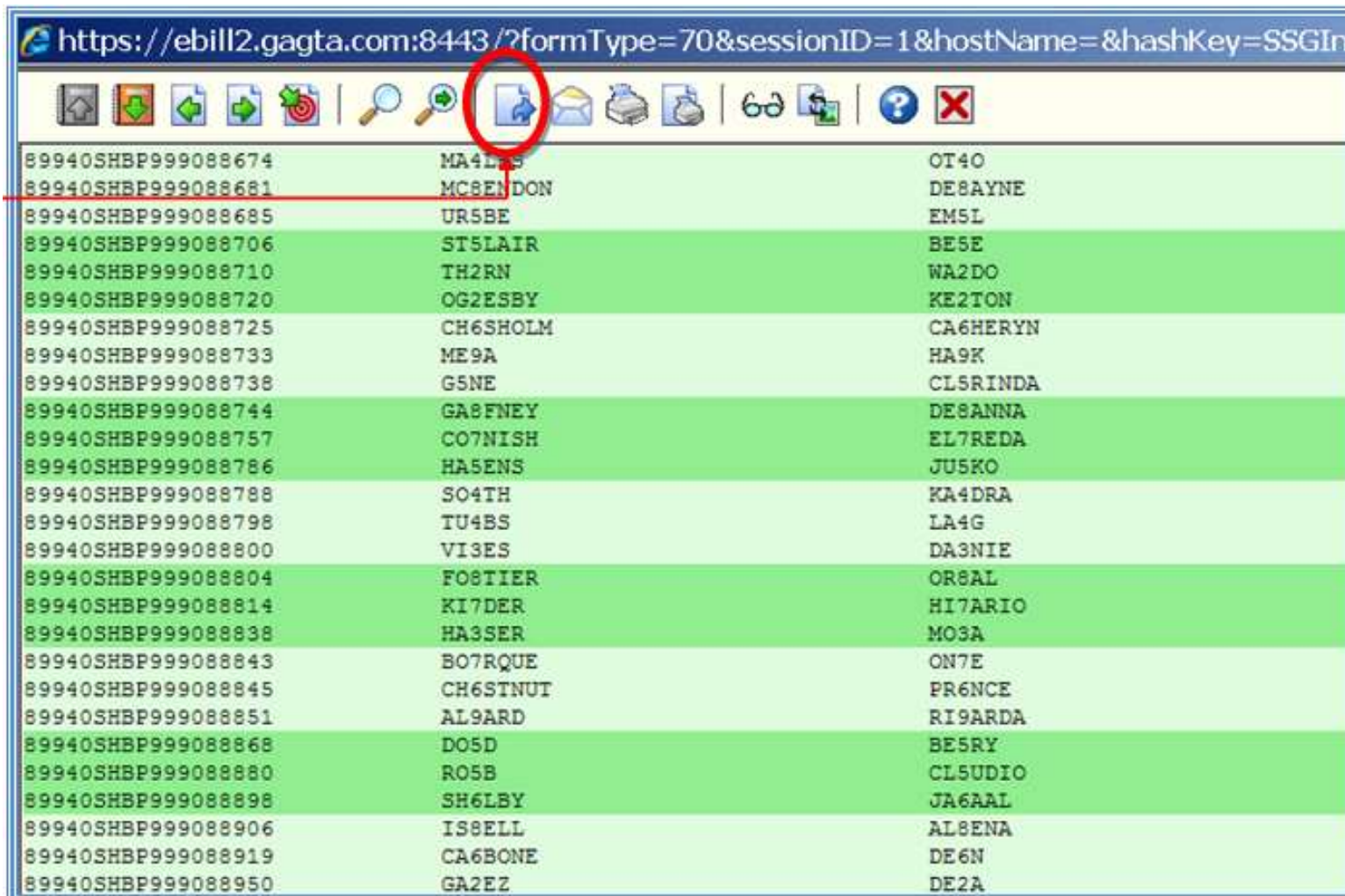
Getting Ready for 2023 GHI

- Download the DCH open enrollment file



Getting Ready for 2023 GHI

- Download the DCH open enrollment file

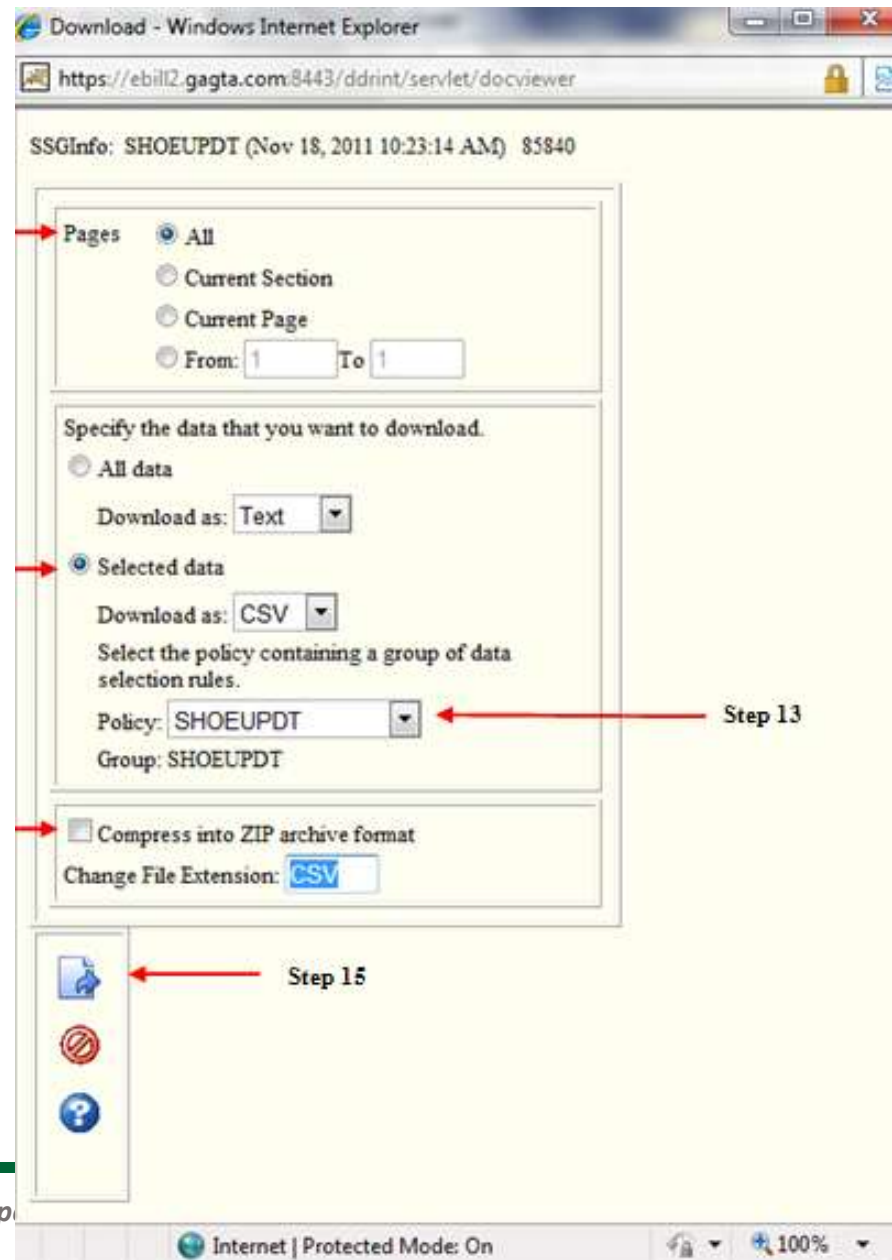


The screenshot shows a web browser window with the URL <https://ebill2.gagta.com:8443/?formType=70&sessionID=1&hostName=&hashKey=SSGIIn>. The browser's toolbar includes a download icon (a downward arrow) which is circled in red. Below the toolbar is a table with three columns of data. The first column contains alphanumeric codes, the second column contains names, and the third column contains codes. The table has 25 rows of data.

89940SHBP999088674	MA4LPS	OT40
89940SHBP999088681	MC8ENDON	DE8AYNE
89940SHBP999088685	UR5BE	EM5L
89940SHBP999088706	ST5LAIR	BE5E
89940SHBP999088710	TH2RN	WA2DO
89940SHBP999088720	OG2ESBY	KE2TON
89940SHBP999088725	CH6SHOLM	CA6HERYN
89940SHBP999088733	ME9A	HA9K
89940SHBP999088738	G5NE	CLS RINDA
89940SHBP999088744	GABFNEY	DESANNA
89940SHBP999088757	CO7NISH	EL7REDA
89940SHBP999088786	HA5ENS	JU5KO
89940SHBP999088788	SO4TH	KA4DRA
89940SHBP999088798	TU4BS	LA4G
89940SHBP999088800	VI3ES	DA3NIE
89940SHBP999088804	FO8TIER	OR8AL
89940SHBP999088814	KI7DER	HI7ARIO
89940SHBP999088838	HA3SER	MO3A
89940SHBP999088843	BO7RQUE	ON7E
89940SHBP999088845	CH6STNUT	PR6NCE
89940SHBP999088851	AL9ARD	RI9ARDA
89940SHBP999088868	DO5D	BE5RY
89940SHBP999088880	RO5B	CL5UDIO
89940SHBP999088898	SH6LBY	JA6AAL
89940SHBP999088906	IS8ELL	AL8ENA
89940SHBP999088919	CA6BONE	DE6N
89940SHBP999088950	GA2EZ	DE2A

Getting Ready for 2023 GHI

- Download the DCH open enrollment file



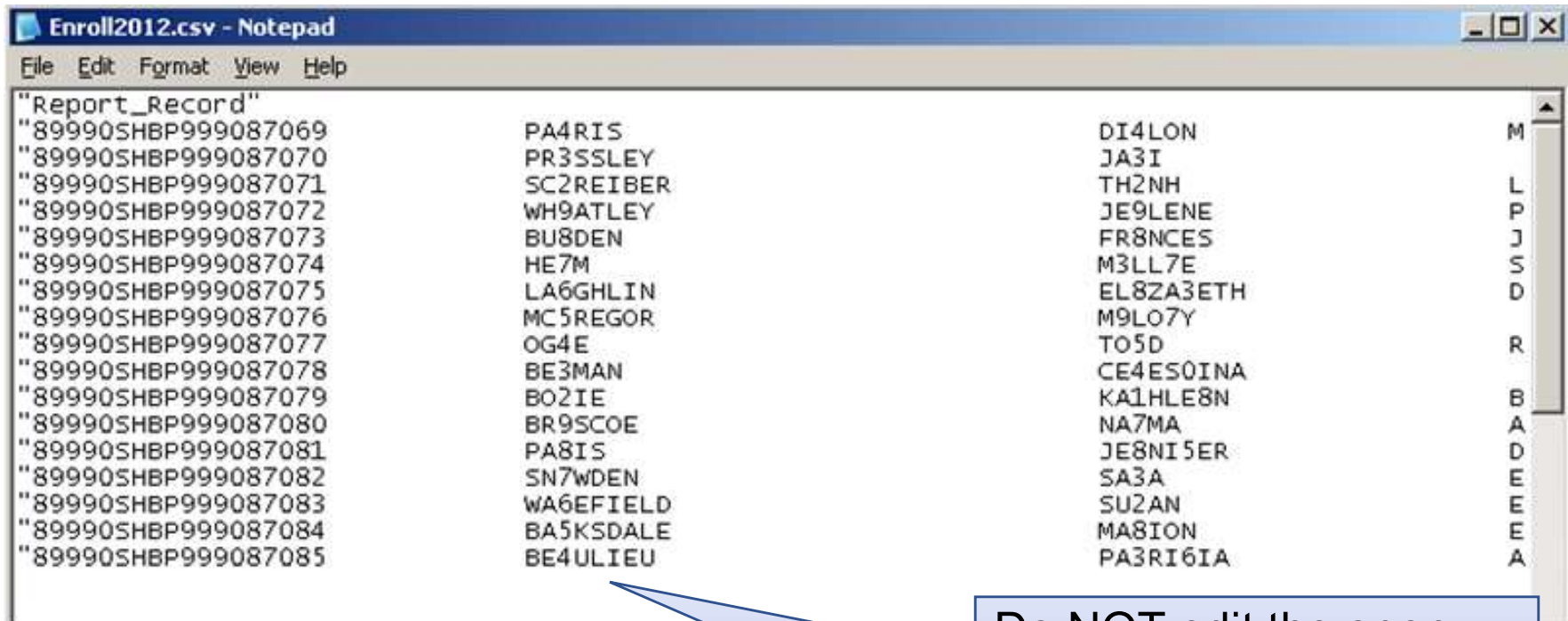
Getting Ready for 2023 GHI

- Download the DCH open enrollment file



Getting Ready for 2023 GHI

- Download the DCH open enrollment file



```
Enroll2012.csv - Notepad
File Edit Format View Help
"Report_Record"
"89990SHBP999087069 PA4RIS DI4LON M
"89990SHBP999087070 PR3SSLEY JA3I
"89990SHBP999087071 SC2REIBER TH2NH L
"89990SHBP999087072 WH9ATLEY JE9LENE P
"89990SHBP999087073 BU8DEN FR8NCES J
"89990SHBP999087074 HE7M M3LL7E S
"89990SHBP999087075 LA6GHLIN EL8ZA3ETH D
"89990SHBP999087076 MC5REGOR M9LO7Y
"89990SHBP999087077 OG4E TO5D R
"89990SHBP999087078 BE3MAN CE4ES0INA B
"89990SHBP999087079 BO2IE KA1HLE8N A
"89990SHBP999087080 BR9SCOE NA7MA D
"89990SHBP999087081 PA8IS JE8NI5ER E
"89990SHBP999087082 SN7WDEN SA3A E
"89990SHBP999087083 WA6EFIELD SUZAN E
"89990SHBP999087084 BA5KSDALE MA8ION E
"89990SHBP999087085 BE4ULIEU PA3RI6IA A
```

Do NOT edit the open enrollment file in Microsoft Excel®. Editing the file in Excel causes the formatting of the file to change.

Getting Ready for 2023 GHI

Open Enrollment – Import GHI Option and Tier Elections

- Personnel System (F3)
- Special Functions Menu (F13)
- Import State Health Option & Tier from DCH File (**F6**)

Getting Ready for 2023 GHI

PCG Dist=8991 Rel=21.03.00 10/22/2021 DOD 002 SV C:\SQLSYS C:\SECOND YELLOW PER13P

Personnel System

Special Functions Menu

FKey

- 1 -- Modify Specific Deduction Amounts
- 4 -- Clear Current Deduction Amounts For All Employees
- 6 -- Import State Health Option & Tier From DCH File**
- 8 -- Set State Health Deduction Amount For Active Employees
- 9 -- Payroll Deduction Export
- 10 -- Load Deduction Import File

Next step: Import the Option & Tier File

Master User List
F16 Word PAY MONITOR VEND MONITOR

Getting Ready for 2023 GHI

Open Enrollment – Import GHI Option and Tier Elections

PCG Dist=8991 Rel=12.03.00 10/16/2012 DOD 001 C:\DEVSY5 C:\SECOND GREEN PERP1271

Import State Health Option And Tier From DCH File

This process will update the GHI Option and Tier for all employees included in the open enrollment or monthly change file provided by the Department of Community Health.

Select Optional Field to Update:

_ County of Residence

Enter the import file path and name OR F10 to Browse for file

C:\TEMP\ARCHIVE.CSU

Enter=Continue or F16=Exit 12.03.00

Getting Ready for 2023 GHI

Set GHI Deduction Amounts

- Personnel System (F3)
- Special Functions Menu (F13)
- Set State Health Deduction Amount For Active Employees (**F8**)

Getting Ready for 2023 GHI

The screenshot shows a window titled "Personnel System" with the user ID "PER13P". The window displays a "Special Functions Menu" with the following options:

- 1 -- Modify Specific Deduction Amounts
- 4 -- Clear Current Deduction Amounts For All Employees
- 6 -- Import State Health Option & Tier From DCH File
- 8 -- Set State Health Deduction Amount For Active Employees**
- 9 -- Payroll Deduction Export
- 10 -- Load Deduction Import File

A red box highlights the option for F8. A blue callout bubble points to it with the text: "Don't forget F8 - Set Deduction Amounts".

The window title bar includes: PCG Dist=8991 Rel=21.03.00 10/22/2021 DOD 002 SV C:\SQLSYS C:\SECOND YELLOW

The taskbar at the bottom shows icons for Master, User List, F16, Word, PAY MONITOR, and VEND MONITOR.

Getting Ready for 2023 GHI

Set GHI Deduction Amounts

PCG Dist=6661 Rel=22.02.00 10/12/2022 DOE 001 C:\DEVSY S C:\SECOND CYAN PER0150

Set State Health Deduction Amount For Active Employees
(All substitutes are skipped)

Trial mode to verify changes prior to updating? **N**
Reduce premium amount by normal employer paid share? **N**
Split premium according to employee's pay schedule? **N**

Set deductions to rates in effect on: 1/01/2023

The following SHBP system deductions will be modified by this process:

Ded Code	Ded Desc	Emplr Ind	Emplr Amt
8	NON-CERTIFIED MERIT	N	
9	CERTIFIED MERIT	N	

ENTER = Validate PF16 = Exit

ENTER ✓ F8 F15

22.02.00

Make sure to set the date to **01/01/2023**

After running in trial mode make sure to finish by running in **FINAL** mode by entering 'N'

Getting Ready for 2023 GHI

Set GHI Deduction Amounts

- Personnel System (F3)
- Special Functions Menu (F13)
- Set State Health Deduction Amount For Active Employees (F8)

REPORT DATE:10/27/2009 10:17		SHBP DEDUCTION UPDATE REPORT						Old	Old	New	New
Program ID: PER0150		*** TRIAL MODE - NO UPDATES ***						Amount	Flg	Amount	Flg
Emp Num	Employee Name	Work Loc	Class	Pay Periods	Ded Code	Plan Option	Plan Tier	Old Amount	Old Flg	New Amount	New Flg
087909	OG4E, B04IS	0188	06	12	09	58 10	10	0.00	Y	8.60	Y
089366	OG4E, EM4RSON	0188	03	12	08	31 99	99	162.58	Y	210.50	Y
088500	OL5ARY, PA5ULA	8012	66	12	08	58 91	91	207.10	Y	252.40	Y
088740	OM6LLEY, EF6AIN	8010	55	12	09	NE 00	00	0.00		0.00	
087836	OR2ELAS, CO2EMAN	0103	78	12	08	58 90	90	167.10	Y	192.40	Y
087827	OR2URKE, DE2A	8012	67	12	08	58 90	90	167.10	Y	192.40	Y
089937	PA2SON, DE2ETRIUS	0188	58	12	08	58 96	96	176.70	Y	203.00	Y
088474	PA2SON, LE2ISHA	0103	06	12	09	03 90	90	128.90	Y	150.40	Y
088105	PA2UETTE, O2ZE	0103	06	12	09	58 10	10	0.00	Y	8.60	Y
089605	PA3NELL, AD3NA	0103	09	12	09	03 94	94	120.80	Y	141.50	Y
089242	PA3ROTT, JO3AS	4050	62	12	08	58 40	40	40.00	Y	68.60	Y
088693	PA4LSEN, ST4RLING	0188	02	12	24	58 96	96	90.60	Y	116.90	Y
089894	PA4LSON, EL4ON	0196	26	12	09	03 90	90	128.90	Y	150.40	Y
087180	PH3LAN, DO3IA	2050	09	12	09	03 96	96	137.00	Y	159.30	Y
088361	PI2KENS, TI2ANY	4050	02	12	09	07 97	97	0.00		0.00	
** ERROR ** SHBP Option/Tier 07/97 not found in Benefit deduction file											
087379	PI4T, CL4SSIE	2050	28	12	09	55 10	10	0.00	Y	8.60	Y
087941	PO2DER, TI2N	0103	56	12	09	05 96	96	137.00	Y	159.30	Y

Agenda

- Introduction
- Migration to Database Technology
- What's Next
- Full Transaction Processing
- PCGenesis Databases
- Getting Ready for 2023 GHI
- **PCGenesis Broadcast E-mail List**



PCGenesis User List

- The Ga DOE has created an e-mail user list for PCGenesis
- This is a discussion forum
- Users can broadcast an e-mail to all PCGenesis users enrolled in the group

PCGenesis User List

- We already have 209 registered users
- Any user involved with PCGenesis can join:
 - Financial Directors
 - Payroll Administrators
 - IT Specialists

PCGenesis User List

Those PCGenesis districts and RESAs that join the user list will be able to:

- Share ideas
- Discuss problems
- Have many more resources available for gaining insight into PCGenesis operations

PCGenesis User List

- Join by sending a blank e-mail to:
join-pcgenesis@list.doe.k12.ga.us
- After joining, users can take advantage of discussion forums by sending e-mails to:
pcgenesis@list.doe.k12.ga.us

Future Plans

Help us focus our efforts

- What major feature/function do you need?
- We welcome your input/requests in writing
- Complete the '**Comments and Requests**' today
- Provide your input during the discussions

Site Recommendations

- Upgrade any server > 3 to 5 years old
- Implement **Remote Desktop** access !!!!
- Weekly full system backup of **K:*.*** (Retain 3 weeks)
- Daily backups of data (**K:\SECOND** and **K:\PCGSQldb**) to CD/DVD/USB (Retain for 1 month)
- Document restore procedures for emergencies

PCGenesis Documentation



<http://www.gadoe.org/Technology-Services/PCGenesis/Pages/default.aspx>

PCGenesis Documentation

 → Technology Services → Technology Services → PCGenesis

PCGenesis

Financial Accounting and Reporting System Operations Guide

Payroll System Operations Guide

Personnel System Operations Guide

Certified/Classified Personnel Information (CPI) System Operations Guide

Budget System Operations Guide

LUAS Manual

Technical System Operations Guide

Release Information

PCGenesis

- [Financial Accounting and Reporting System Operations Guide](#)
- [Payroll System Operations Guide](#)
- [Personnel System Operations Guide](#)
- [Certified/Classified Personnel Information \(CPI\) System Operations Guide](#)
- [Budget System Operations Guide](#)
- [LUAS Manual](#)
- [Technical System Operations Guide](#)
- [Release Information](#)

Questions?



Thank you for attending!

