

# **2016 CCRPI Series Session 3 Progress, Achievement Gap, Scoring**

July 14, 2016

# 2016 CCRPI Webinar Series

**June 23, 2016** CCRPI Overview

**June 27, 2016** CCRPI Post-Data Collection Application

**June 30, 2016** Achievement, ETBs, Performance Flags, ED/EL/SWD Performance

**July 14, 2016** Progress, Achievement Gap, Scoring

Georgia Department of Education



Richard Woods,  
Georgia's School Superintendent  
*"Educating Georgia's Future"*  
[ga DOE.org](http://ga DOE.org)

# Progress

Georgia Department of Education



Richard Woods,  
Georgia's School Superintendent  
"Educating Georgia's Future"  
[ga DOE.org](http://ga DOE.org)

# Progress

## Answers the question...

*Are students growing at a typical or high rate compared to academically-similar students from across Georgia?*

Georgia Department of Education

# Progress

The Progress calculation is based on the Student Growth Percentiles (SGPs) for Full Academic Year (FAY) students for each content area. GAA assessment scores are not utilized for this calculation.

# Student Growth Percentiles

- An SGP describes a student's growth relative to academically-similar students.
- This ensures a student's starting point is considered when measuring his or her growth.
- SGPs range from 1 to 99.
- All students, regardless of their prior achievement level, have the opportunity to demonstrate all levels of growth.
- For more information, visit [gsgm.gadoe.org](http://gsgm.gadoe.org)

# High School

## ELA EOC

- ✓ 9<sup>th</sup> Grade Literature and Composition
- ✓ American Literature and Composition

## Math EOC

- ✓ Coordinate Algebra
- ✓ Analytic Geometry
- ✓ Algebra I
- ✓ Geometry

## Science EOC

- ✓ Biology
- ✓ Physical Science

## Social Studies EOC

- ✓ US History
- ✓ Economics

# Elementary/Middle Schools

- ✓ ELA EOG
- ✓ Math EOG **or Math EOC**
- ✓ Science EOG **or Science EOC**
- ✓ Social Studies EOG

Georgia Department of Education



# Progress Calculation



Richard Woods,  
Georgia's School Superintendent  
"Educating Georgia's Future"  
[ga DOE.org](http://ga DOE.org)

- The denominator value is FAY Participants with an SGP.
- The numerator value is FAY Participants with an SGP meeting Typical or High Growth.

$$\text{Rate} = \frac{\text{Students Meeting Typical and High Growth}}{\text{FAY Participants with an SGP}}$$

Georgia Department of Education

# Progress - Public



Richard Woods,  
Georgia's School Superintendent  
"Educating Georgia's Future"  
[ga DOE.org](http://ga DOE.org)

College and Career Ready  
Performance Index (CCRPI)



Richard Woods  
Georgia's School Superintendent



2015 College and Career Ready Performance Index (CCRPI)

District:

School:

Title I School: Yes

Grades: 09, 10, 11, 12

Choose a Report Type:

☐ School

☒ High School

CCRPI Score Achievement Progress Achievement Gap ED/EL/SWD Performance Exceeding the Bar Performance Flags Financial Efficiency School Climate

CCRPI Score

CCRPI Score


82.6

Sum of Achievement, Progress, Achievement Gap, and Challenge Points

| Achievement Points | Progress Points | Achievement Gap Points | Challenge Points             |                          | Financial Efficiency Rating | School Climate Rating |
|--------------------|-----------------|------------------------|------------------------------|--------------------------|-----------------------------|-----------------------|
|                    |                 |                        | ED/EL/SWD Performance Points | Exceeding the Bar Points |                             |                       |
| 31.8               | 35.8            | 8.3                    | 6.7                          | 0                        | NA                          | ★★★★                  |


6.7

Georgia Department of Education



College and Career Ready  
Performance Index (CCRPI)

Richard Woods  
Georgia's School Superintendent



### 2015 College and Career Ready Performance Index (CCRPI)

District: 
School:

Title I School: Yes
Grades: 09, 10, 11, 12

Choose a Report Type:
☐ School
☒ High School

CCRPI Score
Achievement
Progress
Achievement Gap
ED/EL/SWD Performance
Exceeding the Bar
Performance Flags
Financial Efficiency
School Climate

#### Progress

| High School Indicators Content Area Assessments     | Count of Students Meeting Typical/High Growth | Count of Students with Student Growth Percentiles (SGPs) |
|---|---|--|
| 9th Grade Literature, American Literature           | 109   | 150  |
| Algebra, Geometry                                   | 92  | 157  |
| Biology, Physical Science                           | 121   | 168  |
| US History, Economics                               | 93  | 140  |
| <b>Total</b>  | <b>415</b>                                    | <b>615</b>   |
| <b>Percent Meeting Typical/High Growth</b>          | <b>.6748</b>                                  |  |
| <b>Benchmark</b>                                    | <b>75.4%</b>                                  |  |
| <b>Adjusted Percent Meeting Typical/High Growth</b> | <b>.89496</b>                                 |  |
| <b>Weighted Performance</b>                         | <b>(.89496)*40</b>                            |  |
| <b>Progress Points Earned</b>                       | <b>35.8</b>                                   |  |

# Points for Progress

- Sum the counts of *Students Meeting Typical/High Growth*.
- Sum the counts of *Students with SGPs*.
- Divide *Students Meeting Typical/High Growth* by *Students with SGPs* to get the *Weighted Performance*.
- Progress is benchmarked at the 95<sup>th</sup> percentile value based on state level data for each grade band.
- Divide the *Weighted Performance* by the decimal value of the benchmark to obtain the adjusted performance.
- Multiply the adjusted performance by 40.
- The product is *Progress Points Earned*.

# Progress - Portal

2015 ▼ **COLLEGE AND CAREER READY PERFORMANCE INDEX (CCRPI)**

District: ▼ Title I School: Yes

School: ▼ Grades: 09, 10, 11, 12

**Choose a Report Type:** ☐ School Score ☒ High School

CCRPI Score Achievement Progress Achievement Gap ED/EL/SWD Performance Exceeding the Bar Performance Flags

Financial Efficiency School Climate Data Details

## CCRPI SCORE

| CCRPI Score   |                 |                        |                              |                          |                             |                       |
|---|-----------------|------------------------|------------------------------|--------------------------|-----------------------------|-----------------------|
| 82.6  |                 |                        |                              |                          |                             |                       |
| Sum of Achievement, Progress, Achievement Gap, and Challenge Points |                 |                        |                              |                          |                             |                       |
| Achievement Points  | Progress Points | Achievement Gap Points | Challenge Points             |                          | Financial Efficiency Rating | School Climate Rating |
|   |                 |                        | ED/EL/SWD Performance Points | Exceeding the Bar Points |                             |                       |
| 31.8  | 35.8            | 8.3                    | 6.7                          | 0                        | NA                          | ★★★★                  |
|   |                 |                        | 6.7                          |                          |                             |                       |

# Progress - Portal



Richard Woods,  
Georgia's School Superintendent  
"Educating Georgia's Future"  
[gadoe.org](http://gadoe.org)

2015
COLLEGE AND CAREER READY PERFORMANCE INDEX (CCRPI)

District:
School:

Title I School: Yes
Grades: 09, 10, 11, 12

Choose a Report Type:
☐ School Score
☒ High School

CCRPI Score
Achievement
Progress
Achievement Gap
ED/EL/SWD Performance
Exceeding the Bar
Performance Flags
Financial Efficiency
School Climate
Data Details

## PROGRESS

| High School Indicators Content Area Assessments     | Count of Students Meeting Typical/High Growth | Count of Students with Student Growth Percentiles (SGPs) |
|---|---|--|
| 9th Grade Literature, American Literature           | 109   | 150  |
| Algebra, Geometry                                   | 92  | 157  |
| Biology, Physical Science                           | 121   | 168  |
| US History, Economics                               | 93  | 140  |
| <b>Total</b>  | <b>415</b>                                    | <b>615</b>   |
| <b>Percent Meeting Typical/High Growth</b>          | <b>.6748</b>                                  |  |
| <b>Benchmark</b>                                    | <b>75.4%</b>                                  |  |
| <b>Adjusted Percent Meeting Typical/High Growth</b> | <b>.89496</b>                                 |  |
| <b>Weighted Performance</b>                         | <b>(.89496)*40</b>                            |  |
| <b>Progress Points Earned</b>                       | <b>35.8</b>                                   |  |

# Progress - Portal



Richard Woods,  
Georgia's School Superintendent  
"Educating Georgia's Future"  
[gadoe.org](http://gadoe.org)

2015 **COLLEGE AND CAREER READY PERFORMANCE INDEX (CCRPI)**

District:  Title I School: Yes

School:  Grades: 09, 10, 11, 12

Choose a Report Type: ☐ School Score ☒ High School

CCRPI Score Achievement Progress Achievement Gap ED/EL/SWD Performance Exceeding the Bar Performance Flags

Financial Efficiency School Climate Data Details

To download a Student Data File: Please select the File Type, then click Download File.

File Type: **9th Grade Literature and Composition**

- Access
- Achievement Gap Z Scores
- American Literature and Composition
- Analytic Geometry
- Attendance Rate
- Biology
- College Readiness
- Coordinate Algebra
- Core Credit for 9th Grade All Students
- Core Credit for 9th Grade SWD Students
- Dual Enrollment
- Economics
- Graduation Rate
- High School Pathway Completers
- High School Pathway Credential
- Physical Science
- Physics
- Progress - Student Growth Percentiles
- US History
- Work-Based Learning/Capstone



Richard Woods,  
Georgia's School Superintendent  
*"Educating Georgia's Future"*  
[ga DOE.org](http://ga DOE.org)

# Achievement Gap

Georgia Department of Education



# Achievement Gap



Richard Woods,  
Georgia's School Superintendent  
"Educating Georgia's Future"  
[gaDOE.org](http://gaDOE.org)

- Goal – Increase the achievement of schools' lowest achieving students
- Measures – The gap between schools' lowest-achieving students and the state average and the extent to which the lowest-achieving students are making academic progress

Georgia Department of Education

# Achievement Gap

- Gap size
  - The size of the gap between the school's lowest 25% of achievers based on *current* scores by content area and the state average
  - Utilizes z scores
- Gap progress
  - The current year progress demonstrated by the school's lowest 25% of achievers based on *prior* scores by content area
  - Utilizes z scores and SGPs

# Achievement Gap - Public



Richard Woods,  
Georgia's School Superintendent  
"Educating Georgia's Future"  
[gadoe.org](http://gadoe.org)

College and Career Ready Performance Index (CCRPI)

Richard Woods  
Georgia's School Superintendent

2015 College and Career Ready Performance Index (CCRPI)

District:

School:

Title I School: Yes

Grades: 09, 10, 11, 12


Choose a Report Type: ☒ School ☐ High School

CCRPI Score Achievement Progress Achievement Gap ED/EL/SWD Performance Exceeding the Bar Performance Flags Financial Efficiency School Climate

CCRPI Score


| CCRPI Score   |                 |                        |                              |                          |                             |                       |
|---|-----------------|------------------------|------------------------------|--------------------------|-----------------------------|-----------------------|
| 82.6  |                 |                        |                              |                          |                             |                       |
| Sum of Achievement, Progress, Achievement Gap, and Challenge Points |                 |                        |                              |                          |                             |                       |
| Achievement Points  | Progress Points | Achievement Gap Points | Challenge Points             |                          | Financial Efficiency Rating | School Climate Rating |
|   |                 |                        | ED/EL/SWD Performance Points | Exceeding the Bar Points |                             |                       |
| 31.8  | 35.8            | 8.3                    | 6.7                          | 0                        | NA                          | ★★★★                  |

Georgia Department of Education



Georgia Department of Education

College and Career Ready  
Performance Index (CCRPI)



Richard Woods  
Georgia's School Superintendent

### 2015 College and Career Ready Performance Index (CCRPI)

District:

School:

Title I School: Yes

Grades: 09, 10, 11, 12

Choose a Report Type:

☐ School
☒ High School

CCRPI Score

Achievement

Progress

Achievement Gap

ED/EL/SWD Performance

Exceeding the Bar

Performance Flags

Financial Efficiency

School Climate

#### Achievement Gap

| High School Content Area Assessments              | Gap Size | Gap Progress | Higher of Gap Size/Gap Progress | Points Possible |
|---|----------|--------------|---------------------------------|-----------------|
| EOC: 9th Grade Literature, American Literature    | 0        | 2            | 2                               | 3               |
| EOC: Algebra, Geometry                            | 2        | 2            | 2                               | 3               |
| EOC: Biology, Physical Science                    | 2        | 3            | 3                               | 3               |
| EOC: US History, Economics                        | 1        | 3            | 3                               | 3               |
| <b>Total</b>                                      |          |              | <b>10</b>                       | <b>12</b>       |
| <b>Percent of Higher of Gap Size/Gap Progress</b> |          |              | <b>.83333</b>                   |                 |
| <b>Weighted Performance</b>                       |          |              | <b>(.83333)*10</b>              |                 |
| <b>Achievement Gap Points Earned</b>              |          |              | <b>8.3</b>                      |                 |

# Example – MS Math

| Student  | Grade | Scale Score | Z Score | Scale Score Prior | Z Score Prior | SGP |
|----------|-------|-------------|---------|-------------------|---------------|-----|
| Sarah    | 6     | 439         | -1.49   | 760               | -2.23         | 63  |
| Peyton   | 6     | 497         | -0.30   | 850               | 0.07          | 53  |
| Caroline | 6     | 570         | 1.19    | 959               | 2.86          | 6   |
| Noah     | 7     | 515         | -0.01   | 818               | -0.42         | 88  |
| Kenneth  | 7     | 513         | -0.05   | 813               | -0.58         | 92  |
| Matthew  | 7     | 454         | -1.16   | 800               | -0.98         | 28  |
| Jordan   | 8     | 475         | -0.77   | 807               | -0.94         | 65  |
| Tyra     | 7     | 531         | 0.29    | 831               | -0.02         | 67  |
| Roberto  | 6     | 516         | 0.09    | 819               | -0.72         | 68  |
| Lydia    | 6     | 521         | 0.19    | 850               | 0.07          | 46  |
| Parrish  | 7     | 539         | 0.44    | 875               | 1.35          | 1   |
| Landon   | 8     | 494         | -0.41   | 836               | -0.15         | 25  |

# Example – MS Math

[doe.org](http://doe.org)

| Student  | Grade | Scale Score | Z Score | Scale Score Prior | Z Score Prior | SGP |
|----------|-------|-------------|---------|-------------------|---------------|-----|
| Sarah    | 6     | 439         | -1.49   | 760               | -2.23         | 63  |
| Peyton   | 6     | 550         | 0.07    | 50                | 0.07          | 53  |
| Caroline | 6     | 559         | 2.86    | 59                | 2.86          | 6   |
| Noah     | 7     | 515         | -0.01   | 818               | -0.42         | 88  |
| Kenneth  | 7     | 513         | -0.05   | 813               | -0.58         | 92  |
| Matthew  | 7     | 454         | -1.16   | 800               | -0.98         | 28  |
| Jordan   | 8     | 475         | -0.77   | 807               | -0.94         | 65  |
| Tyra     | 7     | 531         | 0.29    | 831               | -0.02         | 67  |
| Roberto  | 6     | 516         | 0.09    | 819               | -0.72         | 68  |
| Lydia    | 6     | 521         | 0.19    | 850               | 0.07          | 46  |
| Parrish  | 7     | 539         | 0.44    | 875               | 1.35          | 1   |
| Landon   | 8     | 494         | -0.41   | 836               | -0.15         | 25  |

**Gap progress** is based on prior scores – in other words, who were the lowest 25% of achievers when they started the school year?

# Example – MS Math

| Student  | Grade | Scale Score | Z Score | Scale Score Prior | Z Score Prior | SGP |
|----------|-------|-------------|---------|-------------------|---------------|-----|
| Sarah    | 6     | 439         | -1.49   | 760               | -2.23         | 63  |
| Peyton   | 6     | 550         | 0.07    | 500               | 0.07          | 53  |
| Caroline | 6     | 559         | 2.86    | 500               | 2.86          | 6   |
| Noah     | 7     | 515         | -0.01   | 818               | -0.42         | 88  |
| Kenneth  | 7     | 515         | -0.58   | 818               | -0.58         | 92  |
| Matthew  | 7     | 515         | -0.98   | 818               | -0.98         | 28  |
| Jordan   | 7     | 515         | -0.94   | 818               | -0.94         | 65  |
| Tyra     | 7     | 531         | 0.29    | 831               | -0.02         | 67  |
| Roberto  | 6     | 516         | 0.09    | 819               | -0.72         | 68  |
| Lydia    | 6     | 521         | 0.19    | 850               | 0.07          | 46  |
| Parrish  | 7     | 539         | 0.44    | 875               | 1.35          | 1   |
| Landon   | 8     | 494         | -0.41   | 836               | -0.15         | 25  |

**Gap progress** is based on prior scores – in other words, who were the lowest 25% of achievers when they started the school year?

Then we find the meanGP for this group – in other words, how much progress did the lowest 25% (based on prior scores) make this year?

# Example – MS Math

| Student  | Grade | Scale Score | Z Score | Scale Score Prior | Z Score Prior | SGP |
|----------|-------|-------------|---------|-------------------|---------------|-----|
| Sarah    | 6     | 439         | -1.49   | 760               | -2.23         | 63  |
| Peyton   | 6     | 550         | 0.07    | 500               | 0.07          | 53  |
| Caroline | 6     | 559         | 2.86    | 500               | 2.86          | 6   |
| Noah     | 7     | 515         | -0.01   | 818               | -0.42         | 88  |
| Kenneth  | 7     | 515         | -0.58   | 818               | -0.58         | 92  |
| Matthew  | 7     | 515         | -0.98   | 818               | -0.98         | 28  |
| Jordan   | 7     | 515         | -0.94   | 818               | -0.94         | 65  |
| Tyra     | 7     | 531         | 0.29    | 831               | -0.02         | 67  |
| Roberto  | 7     | 531         | -0.72   | 831               | -0.72         | 68  |
| Lydia    | 7     | 531         | 0.07    | 831               | 0.07          | 46  |
| Parrish  | 7     | 539         | 0.44    | 875               | 1.35          | 1   |
| Landon   | 8     | 494         | -0.41   | 836               | -0.15         | 25  |

**Gap progress** is based on prior scores – in other words, who were the lowest 25% of achievers when they started the school year?

Then we find the meanGP for this group – in other words, how much progress did the lowest 25% (based on prior scores) make this year?

$$\frac{63 + 28 + 65}{3} = 52$$



# Example – MS Math

| Student  | Grade | Scale Score | Z Score | Scale Score Prior | Z Score Prior | SGP |
|----------|-------|-------------|---------|-------------------|---------------|-----|
| Sarah    | 6     | 439         | -1.49   | 760               | -2.23         | 63  |
| Peyton   | 6     | 450         | 0.07    | 50                | 0.07          | 53  |
| Caroline | 6     | 459         | 2.86    | 59                | 2.86          | 6   |
| Noah     | 7     | 515         | -0.01   | 818               | -0.42         | 88  |
| Kenneth  | 7     | 515         | -0.58   | 818               | -0.58         | 92  |
| Matthew  | 7     | 515         | -0.98   | 818               | -0.98         | 28  |
| Jordan   | 7     | 515         | -0.94   | 818               | -0.94         | 65  |
| Tyra     | 7     | 531         | 0.29    | 831               | -0.02         | 67  |
| Roberto  | 7     | 531         | 0.29    | 831               | -0.02         | 67  |
| Lydia    | 7     | 531         | 0.29    | 831               | -0.02         | 67  |
| Parrish  | 7     | 539         | 0.44    | 839               | 0.44          | 8   |
| Landon   | 8     | 494         | -0.41   | 8                 | -0.41         | 8   |

**Gap progress** is based on prior scores – in other words, who were the lowest 25% of achievers when they started the school year?

Then we find the meanGP for this group – in other words, how much progress did the lowest 25% (based on prior scores) make this year?

$$\frac{63 + 28 + 65}{3} = 52$$

| Gap Progress     | Score |
|------------------|-------|
| meanGP < 35      | 0     |
| 35 ≤ meanGP < 50 | 1     |
| 50 ≤ meanGP ≤ 65 | 2     |
| meanGP > 65      | 3     |

# Example – MS Math

| Student | Grade | Scale Score | Z Score | Scale Score Prior | Z Score Prior | SGP |
|---------|-------|-------------|---------|-------------------|---------------|-----|
| Sarah   | 6     | 439         | -1.49   | 760               | -2.23         | 63  |
|         |       |             | -0.30   | 850               | 0.07          | 53  |
|         |       |             | 1.19    | 959               | 2.86          | 6   |
|         |       |             | -0.01   | 818               | -0.42         | 88  |
| Kenneth | 7     | 513         | -0.05   | 813               | -0.58         | 92  |
| Matthew | 7     | 454         | -1.16   | 800               | -0.98         | 28  |
| Jordan  | 8     | 475         | -0.77   | 807               | -0.94         | 65  |
| Tyra    | 7     | 531         | 0.29    | 831               | -0.02         | 67  |
| Roberto | 6     | 516         | 0.09    | 819               | -0.72         | 68  |
| Lydia   | 6     | 521         | 0.19    | 850               | 0.07          | 46  |
| Parrish | 7     | 539         | 0.44    | 875               | 1.35          | 1   |
| Landon  | 8     | 494         | -0.41   | 836               | -0.15         | 25  |

**Gap size** is based on current scores – in other words, who are the lowest 25% of achievers at the end of the school year?

# Example – MS Math

[doe.org](http://doe.org)

| Student | Grade | Scale Score | Z Score | Scale Score Prior | Z Score Prior | SGP |
|---------|-------|-------------|---------|-------------------|---------------|-----|
| Sarah   | 6     | 439         | -1.49   | 760               | -2.23         | 63  |
|         |       |             | -0.30   | 850               | 0.07          | 53  |
|         |       |             | 1.19    | 959               | 2.86          | 6   |
|         |       |             | -0.01   | 818               | -0.42         | 88  |
| Kenneth | 7     | 513         | -0.05   | 813               | -0.58         | 92  |
|         |       |             | -1.16   | 800               | -0.98         | 28  |
|         |       |             | -0.77   | 807               | -0.94         | 65  |
|         |       |             | 0.29    | 831               | -0.02         | 67  |
| Roberto | 8     | 510         | 0.09    | 819               | -0.72         | 68  |
| Lydia   | 6     | 521         | 0.19    | 850               | 0.07          | 46  |
| Parrish | 7     | 539         | 0.44    | 875               | 1.35          | 1   |
| Landon  | 8     | 494         | -0.41   | 836               | -0.15         | 25  |

**Gap size** is based on current scores – in other words, who are the lowest 25% of achievers at the end of the school year?

Then we find the average z score for this group and compare that to the state average – in other words, how close to the state average is the current lowest 25%?

# Example – MS Math

| Student | Grade | Scale Score | Z Score | Scale Score Prior | Z Score Prior | SGP |
|---------|-------|-------------|---------|-------------------|---------------|-----|
| Sarah   | 6     | 439         | -1.49   | 760               | -2.23         | 63  |
|         |       |             | -0.30   | 850               | 0.07          | 53  |
|         |       |             | 1.19    | 959               | 2.86          | 6   |
|         |       |             | -0.01   | 818               | -0.42         | 88  |
| Kenneth | 7     | 513         | -0.05   | 813               | -0.58         | 92  |
|         |       |             | -1.16   | 800               | -0.98         | 28  |
|         |       |             | -0.77   | 807               | -0.94         | 65  |
|         |       |             | 0.29    | 831               | -0.02         | 67  |
| Roberto | 8     | 510         | 0.09    | 819               | -0.72         | 68  |
|         |       |             |         | 850               | 0.07          | 46  |
| Farrish | 7     | 535         | 0.44    | 875               | 1.35          | 1   |
| Landon  |       |             |         | 836               | -0.15         | 25  |

**Gap size** is based on current scores – in other words, who are the lowest 25% of achievers at the end of the school year?

Then we find the average z score for this group and compare that to the state average – in other words, how close to the state average is the current lowest 25%?

$$\frac{(-1.49) + (-1.16) + (-0.77)}{3} = -1.14$$

$$0 - (-1.14) = 1.14$$

## Example – MS Math

[illegible]

# Achievement Gap Calculation



Richard Woods,  
Georgia's School Superintendent  
"Educating Georgia's Future"  
[gaDOE.org](http://gaDOE.org)

- Calculate gap size for each subject
  - Difference between state average (0) and mean z score (based on current scores) of the lowest 25%
  - Assign rubric value
- Calculate gap progress for each subject
  - MeanGP of the lowest 25% (based on prior scores)
  - Assign rubric value
- For each subject, take the higher of the gap size and gap progress
- Divide total points earned / total points possible
  - Multiply by 10 to get final points

# Achievement Gap - Portal



Richard Woods,  
Georgia's School Superintendent  
"Educating Georgia's Future"  
[gadoe.org](http://gadoe.org)

2015 ▼ **COLLEGE AND CAREER READY PERFORMANCE INDEX (CCRPI)**

District: ▼ Title I School: Yes

School: ▼ Grades: 09, 10, 11, 12

Choose a Report Type: ☐ School Score ☒ High School

CCRPI Score Achievement Progress Achievement Gap ED/EL/SWD Performance Exceeding the Bar Performance Flags

Financial Efficiency School Climate Data Details

## CCRPI SCORE

| CCRPI Score   |                 |                        |                              |                          |                             |                       |
|---|-----------------|------------------------|------------------------------|--------------------------|-----------------------------|-----------------------|
| 82.6  |                 |                        |                              |                          |                             |                       |
| Sum of Achievement, Progress, Achievement Gap, and Challenge Points |                 |                        |                              |                          |                             |                       |
| Achievement Points  | Progress Points | Achievement Gap Points | Challenge Points             |                          | Financial Efficiency Rating | School Climate Rating |
|   |                 |                        | ED/EL/SWD Performance Points | Exceeding the Bar Points |                             |                       |
| 31.8  | 35.8            | 8.3                    | 6.7                          | 0                        | NA                          | ★★★★                  |
|   |                 |                        | 6.7                          |                          |                             |                       |

Georgia Department of Education

2015
COLLEGE AND CAREER READY PERFORMANCE INDEX (CCRPI)

District:
School:

Title I School: Yes
Grades: 09, 10, 11, 12

Choose a Report Type:
☐ School Score
☒ High School

CCRPI Score
Achievement
Progress
Achievement Gap
ED/EL/SWD Performance
Exceeding the Bar
Performance Flags
Financial Efficiency
School Climate
Data Details

### ACHIEVEMENT GAP

| High School Content Area Assessments              | Gap Size           | Gap Progress | Higher of Gap Size/Gap Progress | Points Possible |
|---|--------------------|--------------|---------------------------------|-----------------|
| EOC: 9th Grade Literature, American Literature    | 0                  | 2            | 2                               | 3               |
| EOC: Algebra, Geometry                            | 2                  | 2            | 2                               | 3               |
| EOC: Biology, Physical Science                    | 2                  | 3            | 3                               | 3               |
| EOC: US History, Economics                        | 1                  | 3            | 3                               | 3               |
| <b>Total</b>                                      |                    |              | <b>10</b>                       | <b>12</b>       |
| <b>Percent of Higher of Gap Size/Gap Progress</b> | <b>.83333</b>      |              |                                 |                 |
| <b>Weighted Performance</b>                       | <b>(.83333)*10</b> |              |                                 |                 |
| <b>Achievement Gap Points Earned</b>              | <b>8.3</b>         |              |                                 |                 |



2015
COLLEGE AND CAREER READY PERFORMANCE INDEX (CCRPI)

District:
School:
Title I School: Yes
Grades: 09, 10, 11, 12

Choose a Report Type:
School Score
High School

CCRPI Score
Achievement
Progress
Achievement Gap
ED/EL/SWD Performance
Exceeding the Bar
Performance Flags
Financial Efficiency
School Climate
Data Details

To download a Student Data File: Please select the File Type, then click Download File.

File Type:
9th Grade Literature and Composition
Access
Achievement Gap Z Scores
American Literature and Composition
Analytic Geometry
Attendance Rate
Biology
College Readiness
Coordinate Algebra
Core Credit for 9th Grade All Students
Core Credit for 9th Grade SWD Students
Dual Enrollment
Economics
Graduation Rate
High School Pathway Completers
High School Pathway Credential
Physical Science
Physics
Progress - Student Growth Percentiles
US History
Work-Based Learning/Capstone



Richard Woods,  
Georgia's School Superintendent  
*"Educating Georgia's Future"*  
[ga DOE.org](http://ga DOE.org)

# Scoring

Georgia Department of Education

# CCRPI: Four Main Components



Richard Woods,  
Georgia's School Superintendent  
"Educating Georgia's Future"  
[ga DOE.org](http://ga DOE.org)

## Achievement

Are students achieving at college and career ready levels? Are they engaged in opportunities to prepare them for college and careers? Are they graduating or on track to graduate high school? Achievement addresses these questions through three sections.

**Content Mastery** — Student performance on state assessments

**Post Readiness** — Student performance on or participation in other measures of college and career readiness

**Graduation Rate** — High school cohort graduation rate or predictor for high school graduation

## Progress

Are students growing at a typical or high level compared to academically-similar students from across Georgia?

## Achievement Gap

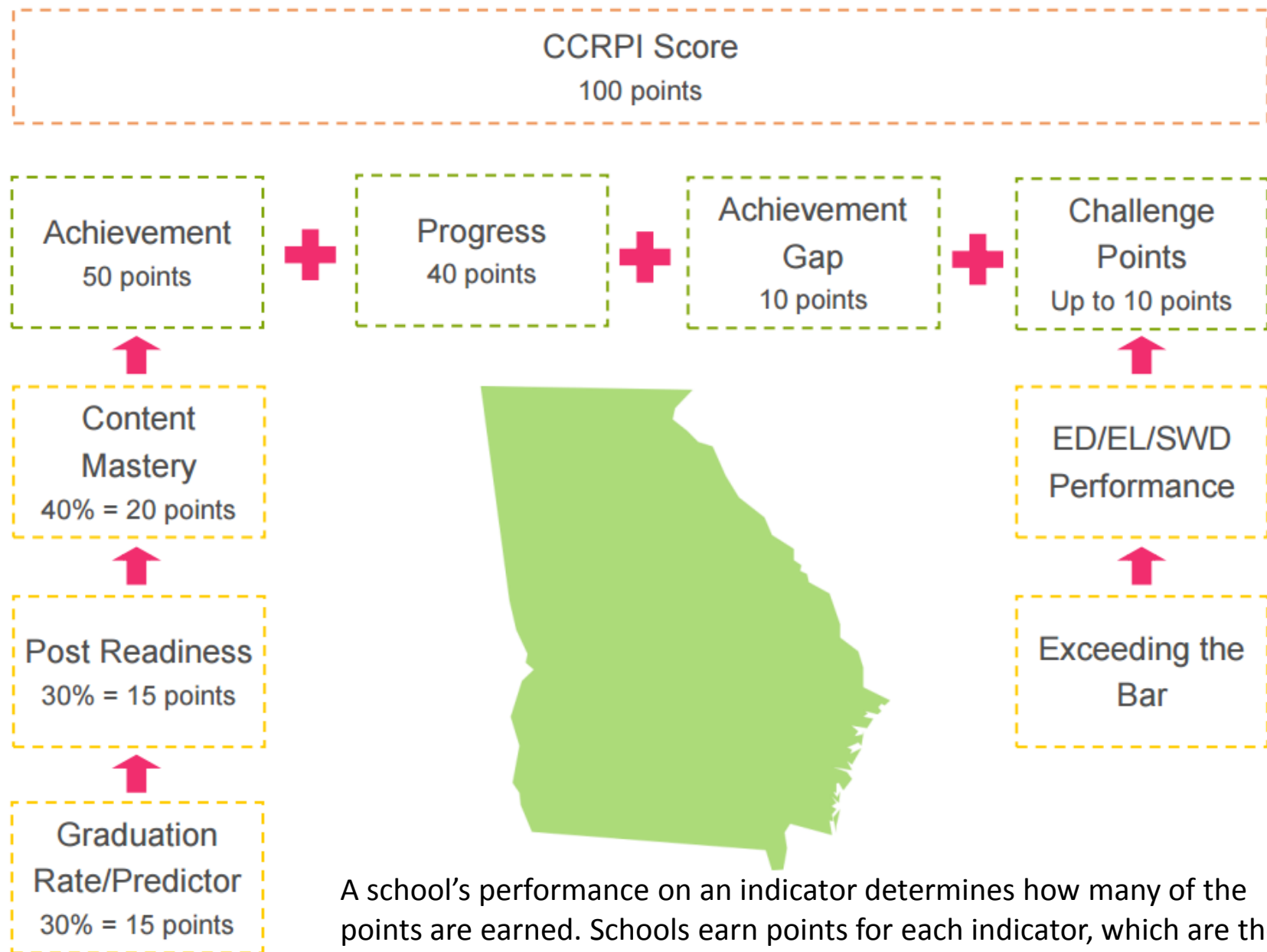
How much progress are the lowest-achieving 25% of students making and what is the gap between the lowest-achieving 25% of students and the state average?

## Challenge Points

Are student subgroups meeting achievement performance goals? Are schools implementing other practices to prepare students for college and careers?

**ED/EL/SWD Performance** — To what extent did Economically Disadvantaged (ED) students, English Learners (EL), and Students with Disabilities (SWD) meet their subgroup performance targets?

**Exceeding the Bar** — To what extent are schools successfully implementing other practices associated with college and career readiness?



A school's performance on an indicator determines how many of the points are earned. Schools earn points for each indicator, which are then added together and weighted to produce an overall CCRPI score.

# Example: Achievement - Content Mastery

|                 |   | Elementary School Indicators   | Benchmark for Indicator (%) | Performance on Indicator (%) | Adjusted Performance on Indicator (%) | Points Possible for Indicator | Points Earned on Indicator |
|-----------------|---|--|-----------------------------|------------------------------|---------------------------------------|-------------------------------|----------------------------|
| CONTENT MASTERY | 1 | Weighted percent of students scoring at Developing Learner or above on the Georgia Milestones English Language Arts EOG (required participation rate >= 95%) | 100                         | 105.447                      | NA                                    | 10                            | 10.545                     |
|                 | 2 | Weighted percent of students scoring at Developing Learner or above on the Georgia Milestones mathematics EOG (required participation rate >= 95%)           | 100                         | 96.784                       | NA                                    | 10                            | 9.678                      |
|                 | 3 | Weighted percent of students scoring at Developing Learner or above on the Georgia Milestones science EOG (required participation rate >= 95%)               | 100                         | 95.261                       | NA                                    | 10                            | 9.526                      |
|                 | 4 | Weighted percent of students scoring at Developing Learner or above on the Georgia Milestones social studies EOG (required participation rate >= 95%)        | 100                         | 100.877                      | NA                                    | 10                            | 10.088                     |
|                 |   |  | Total Points                |                              |                                       | 40                            | 39.837                     |
|                 |   |  | Category Performance %      |                              |                                       | .996                          |                            |
|                 |   |  | Category Weight             |                              |                                       | 40%                           |                            |
|                 |   |  | Weighted Performance        |                              |                                       | .3984                         |                            |
|                 |   |  |                             |                              |                                       |                               |                            |

- Sum the *Points Possible on Indicator*.
- Sum the *Points Earned on Indicator*.
- Divide the *Points Earned on Indicator* by the *Points Possible on Indicator*.
- Multiply this decimal value (*Category Performance %*) by the decimal value of the *Category Weight*.
- This product is the *Weighted Performance*.

# Achievement Scoring Details

| Achievement – 50 points   |   |  |
|---|---|--|
| Elementary School   | Middle School   | High School  |
| Content Mastery (40%) - EOG   | Content Mastery (40%) – EOG/EOC   | Content Mastery (40%) - EOC  |
| $40\% \times 50 = .40 \times 50 = 20$<br>4 indicators<br>$20 / 4 = 5$ points each   | $40\% \times 50 = .40 \times 50 = 20$<br>4 indicators<br>$20 / 4 = 5$ points each | $40\% \times 50 = .40 \times 60 = 20$<br>8 indicators<br>$20 / 8 = 2.5$ points each  |
| Post Readiness (30%)  | Post Readiness (30%)  | Post Readiness (30%)   |
| $30\% \times 50 = .30 \times 50 = 15$<br>6 indicators<br>$15 / 6 = 2.5$ points each | $30\% \times 50 = .30 \times 50 = 15$<br>5 indicators<br>$15 / 5 = 3$ points each | $30\% \times 50 = .30 \times 50 = 15$<br>7 indicators<br>$15 / 7 = 2.143$ points each  |
| Grad Rate/Predictor (30%)   | Grad Rate/Predictor (30%)   | Grad Rate/Predictor (30%)  |
| $30\% \times 50 = .30 \times 50 = 15$<br>1 indicator<br>$15 / 1 = 15$ points each   | $30\% \times 50 = .30 \times 50 = 15$<br>1 indicator<br>$15 / 1 = 15$ points each | $30\% \times 50 = .30 \times 50 = 15$<br>2 indicators<br>4-year cohort grad rate = $2/3$ of 15 = 10 points<br>5-year cohort grad rate = $1/3$ of 15 = 5 points |

# Overall Score

CCRPI Score Achievement Progress Achievement Gap ED/EL/SWD Performance Exceeding the Bar Performance Flags Financial Efficiency

School Climate

## CCRPI Score

| CCRPI Score   |                 |                        |                              |                          |                             |                       |
|---|-----------------|------------------------|------------------------------|--------------------------|-----------------------------|-----------------------|
| 93.5  |                 |                        |                              |                          |                             |                       |
| Sum of Achievement, Progress, Achievement Gap, and Challenge Points |                 |                        |                              |                          |                             |                       |
| Achievement Points  | Progress Points | Achievement Gap Points | Challenge Points             |                          | Financial Efficiency Rating | School Climate Rating |
|   |                 |                        | ED/EL/SWD Performance Points | Exceeding the Bar Points |                             |                       |
|   |                 |                        | .9                           | 0                        |                             |                       |
| 45.1  | 37.5            | 10                     | .9                           |                          | NA                          | ★★★★                  |

Georgia Department of Education

# Additional Considerations

Some indicators are benchmarked at a value less than 100%.

| Benchmark for Indicator (%) | Performance on Indicator (%) | Adjusted Performance on Indicator (%) | Points Possible for Indicator | Points Earned on Indicator |
|-----------------------------|------------------------------|---------------------------------------|-------------------------------|----------------------------|
| 91.3                        | 87.500                       | 95.838                                | 10                            | 9.584                      |

- Divide the *Performance on Indicator* by the *Benchmark for Indicator*.
- Multiply the decimal value of the result (*Adjusted Performance on Indicator*) by 10.
- This product = *Points Earned on Indicator*.

$$87.5/91.3 = .9584$$

$$.9584 \times 10 = 9.584$$



Allison Timberlake, Ph.D., Director of Accountability  
[atimberlake@doe.k12.ga.us](mailto:atimberlake@doe.k12.ga.us) or (404) 463-6666

Tianna Floyd, Accountability Specialist  
[tfloyd@doe.k12.ga.us](mailto:tfloyd@doe.k12.ga.us) or (404) 463-1166

August Ogletree, Ph.D., Accountability Research Specialist  
[aogletree@doe.k12.ga.us](mailto:aogletree@doe.k12.ga.us) or (404) 463-6675

Qi Qin, Assessment Specialist, Growth Model  
[qqin@doe.k12.ga.us](mailto:qqin@doe.k12.ga.us) or (404) 657-0311

Paula Swartzberg, Accountability Specialist  
[pswartzberg@doe.k12.ga.us](mailto:pswartzberg@doe.k12.ga.us) or (404) 463-1539

Melissa Fincher, Ph.D., Deputy Superintendent for Assessment and  
Accountability  
[mfincher@doe.k12.ga.us](mailto:mfincher@doe.k12.ga.us) or (404) 651-9405