

# Directors' Webinar Teacher Provider Retention Grant Updates December 13, 2022

Dr. Katherine Johnson  
Program Manager for Instruction and  
Systemic Improvement



# Teacher Induction Training by the Numbers

23  
regions/districts  
have provided  
training

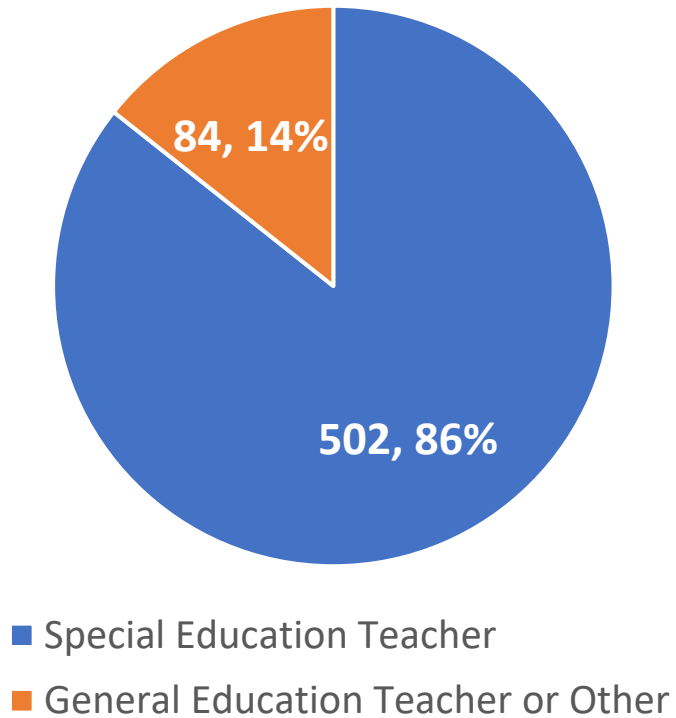
8 district-specific  
(Bibb, Cherokee,  
Clayton,  
Douglas,  
Marietta City,  
Murray, Pickens,  
Rockdale)

85 districts have  
been  
represented (91  
in 21-22)

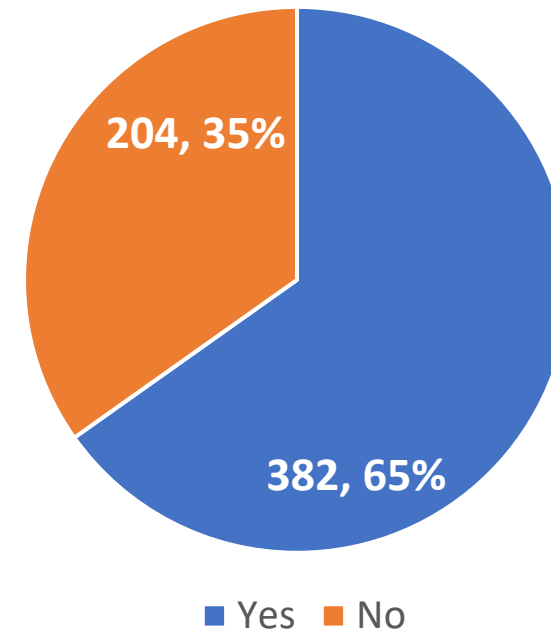
610 participants  
to date (432 in  
21-22)

# Training Participant Demographics

## Type of Teacher

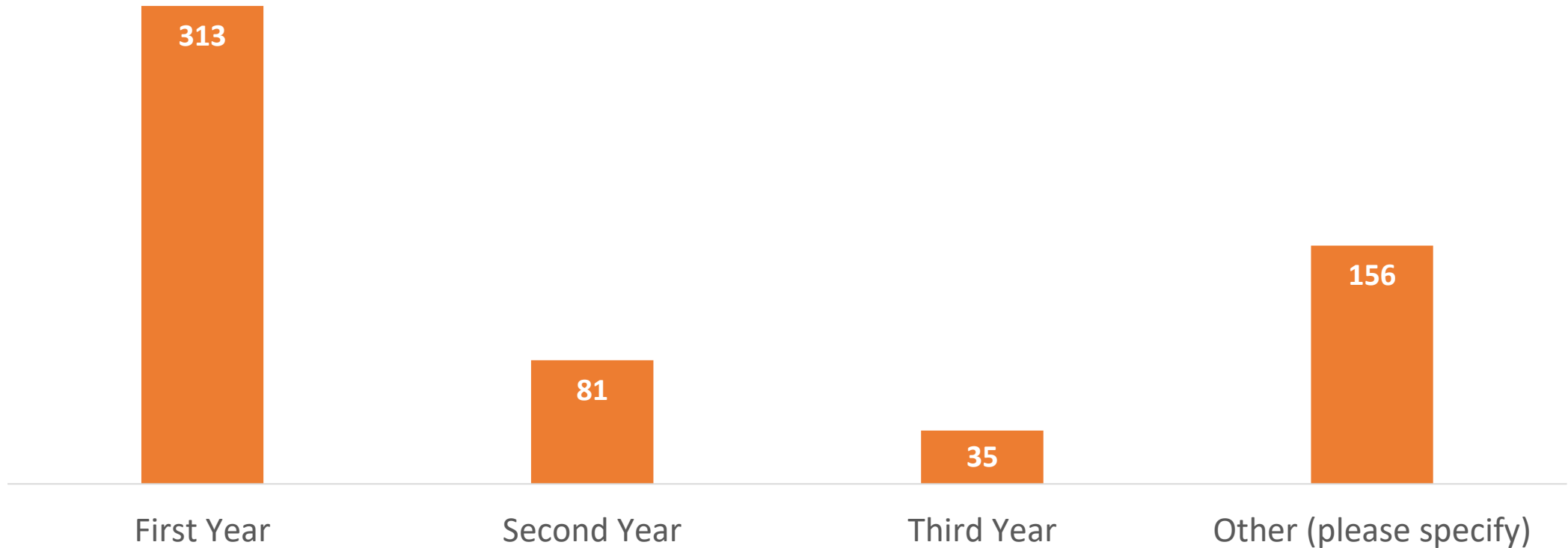


## Certified to Teach Special Education

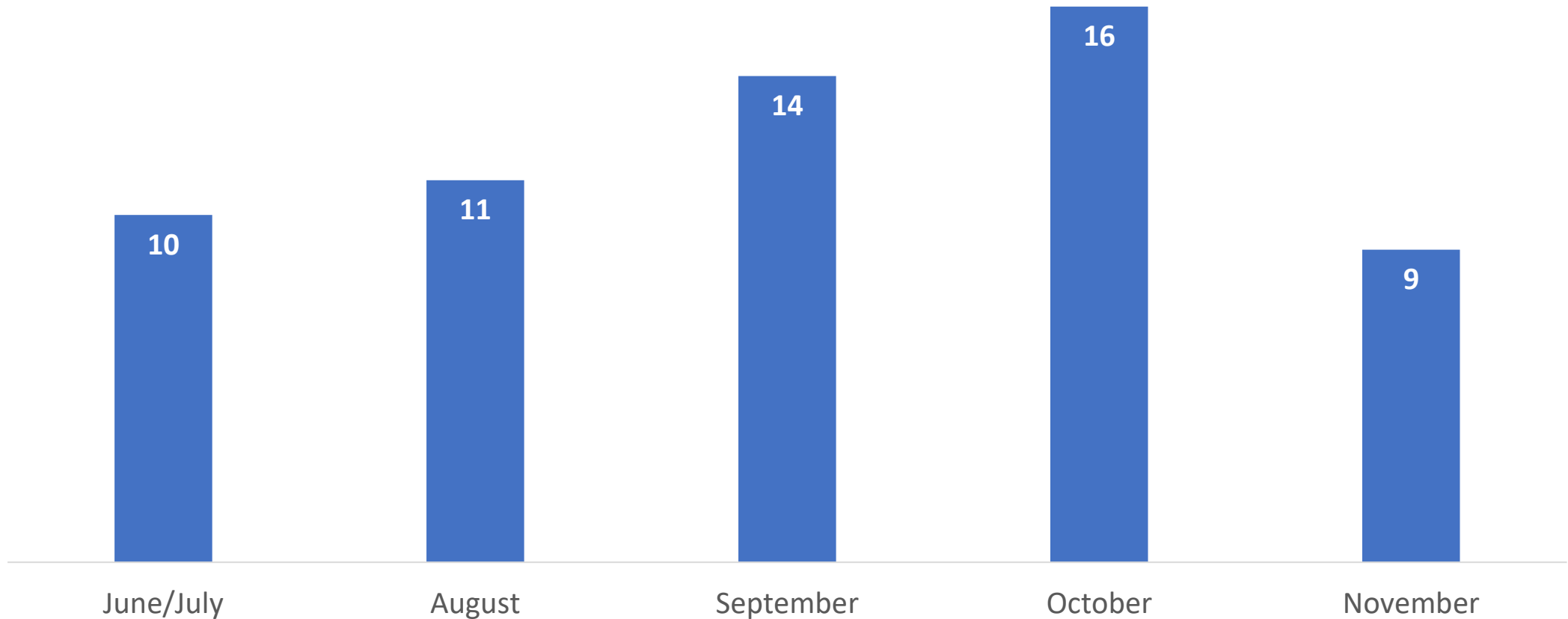


# Training Participant Demographics: 54% are first year special education teachers.

Years of Experience in Special Education

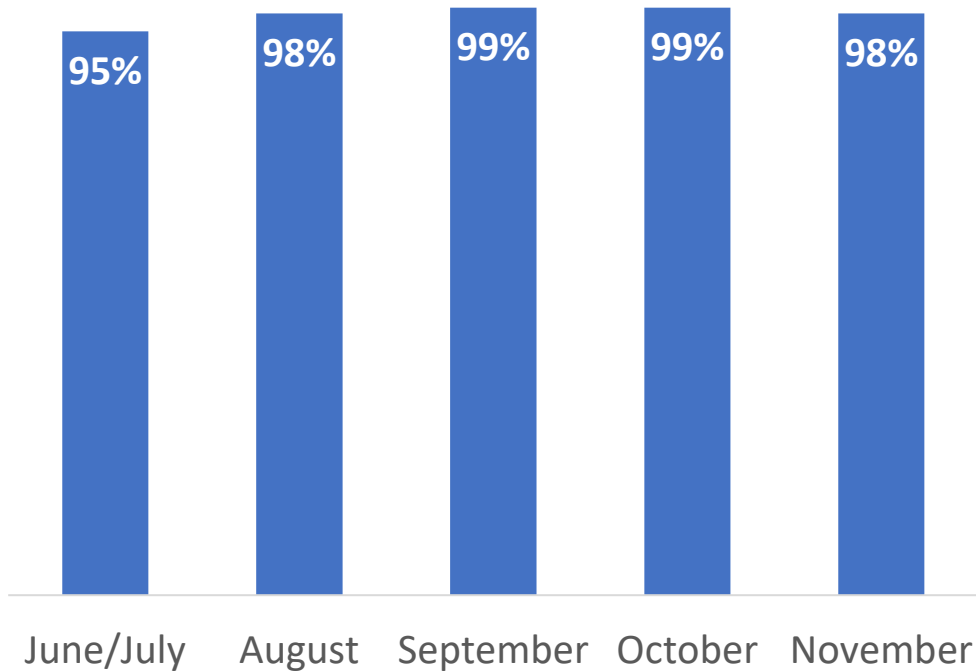


# Number of trainings had increased each month, before dropping in November.

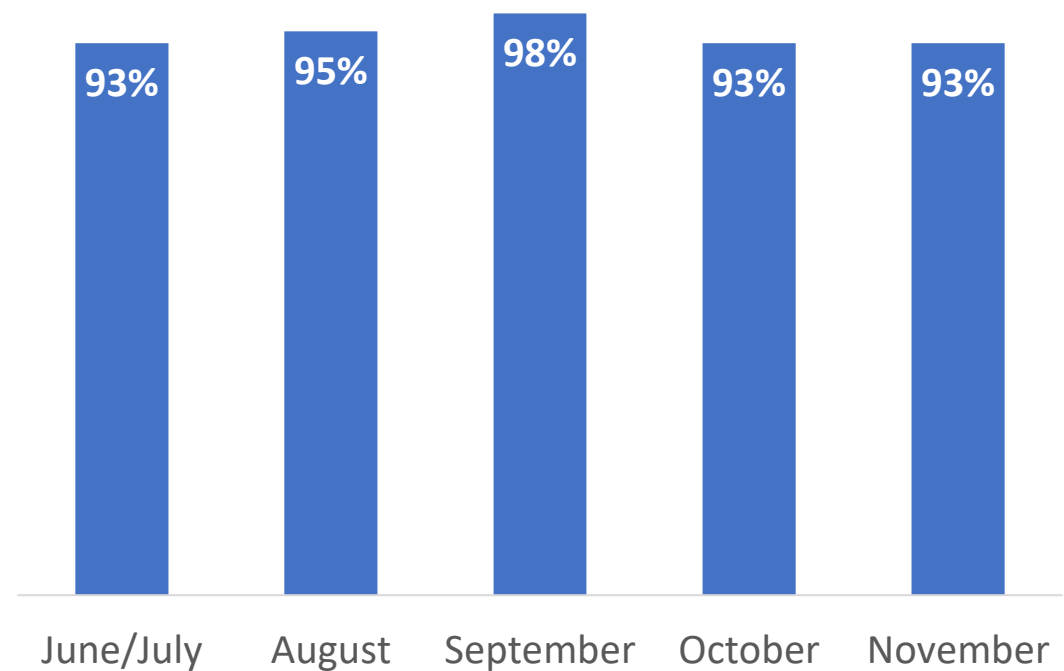


# Post-Evaluations: Training satisfaction and readiness ratings were consistently high in June-October.

Overall, I was satisfied with the training.



I feel ready to use the HLP(s) taught in this training.

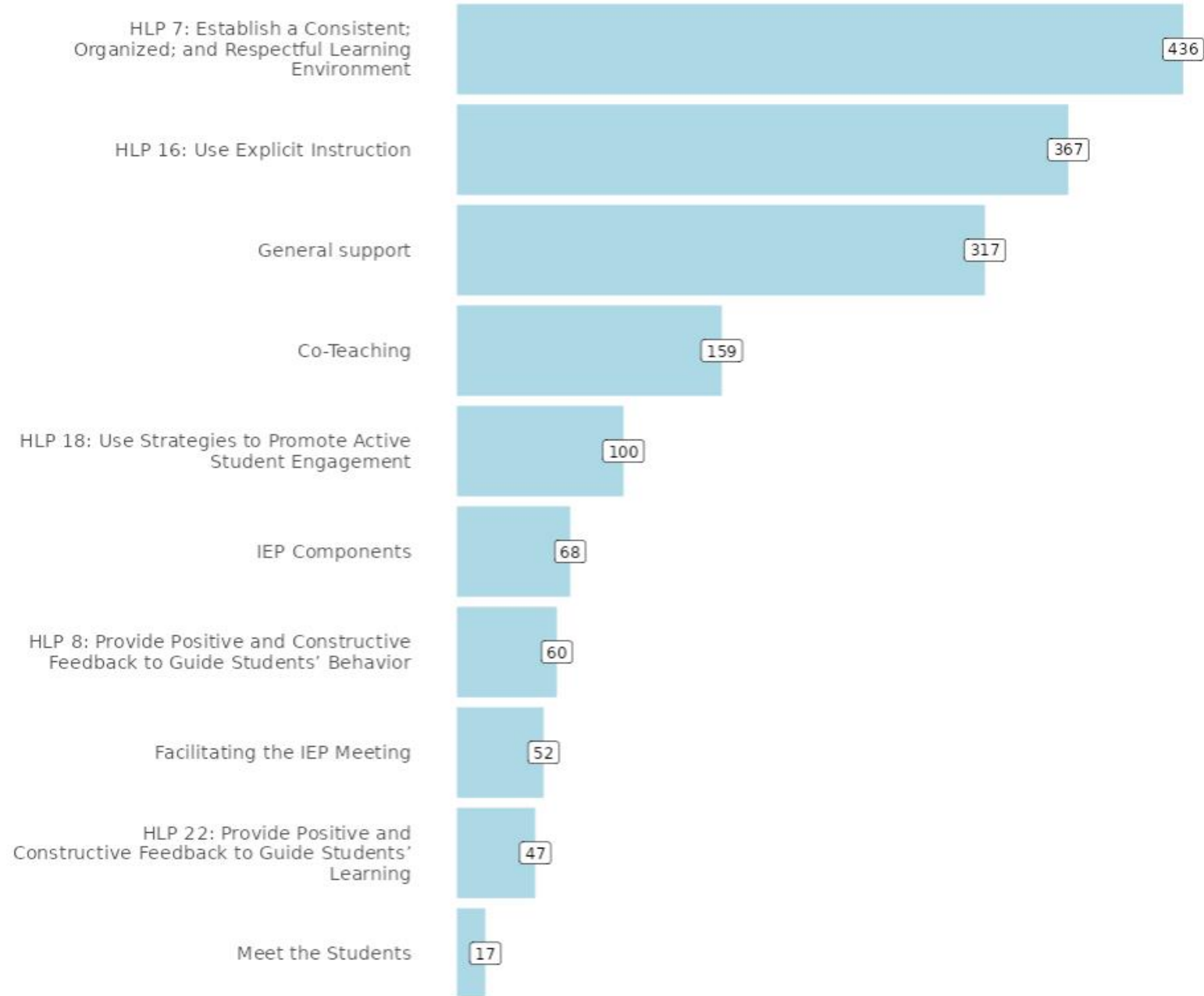


# Themes for: “What additional information and/or training do you need to support your work?”

- N/A, None, Not Sure (n=66)
- IEPs and Go-IEP Training (n=43)
- Kudos (n=13)
- Need more practice and hands-on activities (n=9)
- Classroom/behavior management (n=8)
- More examples specific to situation or setting (n=8)
- Co-teaching and working with other teachers (n=5)
- Data collection (n=4)
- Interventions and progress monitoring (n=3)
- Training for those brand-new to teaching (n=3)
- Lesson planning (n=3)
- Other (n=6)

# Teacher Induction Coaching Content

- 906 entries have been made since July 1, 2022.





# What additional information and/or training do you need to support your work?

Examples of direct instruction one on one is mainly what I do.

## “Bite Size” Explicit Instruction PL Offerings

- More hands-on training with visual examples.

## “Bite Size” Multisensory PL Offerings

- More behavioral intervention training.

## Back to Basic Series

- Monthly Community of Practice sessions offered

# What additional support is provided? July – December 2022 “Bite Size” PL Offerings

- Specially Designed Instruction and Multisensory Learning (4 repeat sessions)
- Coteaching and Specially Designed Instruction in the Virtual Classrooms (2 repeat session)
- Reciprocal Teaching: Guiding Dialogue About What is Read. (2 repeat sessions)
- Multisensory Approaches When Teaching Vocabulary (1 repeat session)
- Is There a Difference Between Balanced Literacy and Structured Literacy? (1 repeat session)
- Notetaking: It's Important to Know How to take Notes, But Equally Important to Know How to Use the Notes.
- Using Data from Informal Reading Assessment to Support Instruction. (1 repeat session)
- Multisensory Learning and Spelling (1 repeat session)
- Cultivating a Positive Learning Environment
- Engaging Instructional Strategies

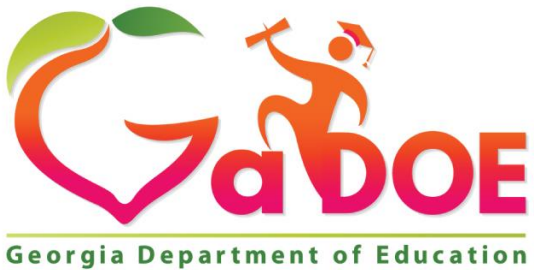
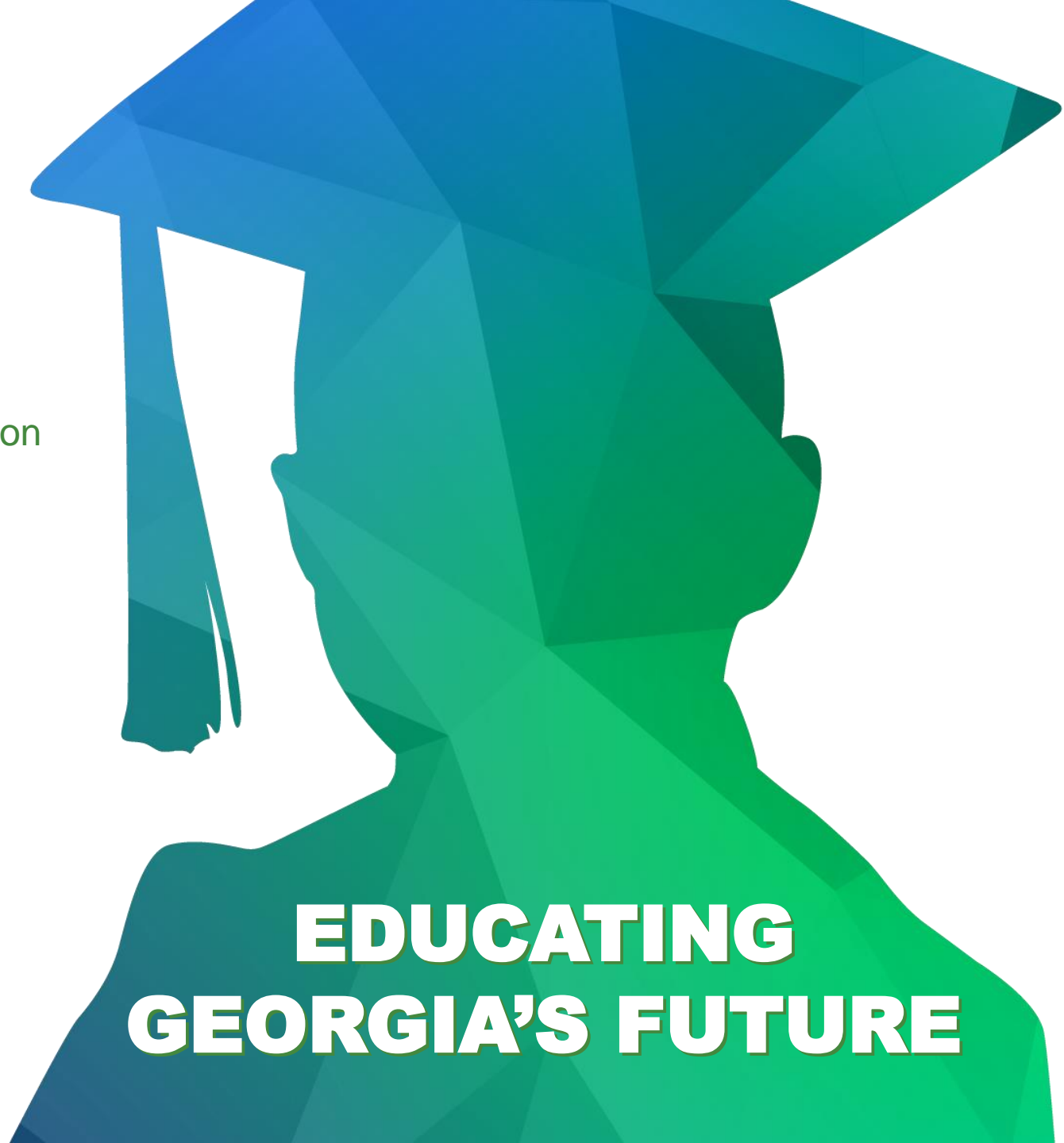
# Thank you!

katherine.johnson@doe.k12.ga.us

[www.gadoe.org](http://www.gadoe.org)

   @georgiadeptofed

 [youtube.com/c/GeorgiaDepartmentofEducation](https://youtube.com/c/GeorgiaDepartmentofEducation)



**EDUCATING  
GEORGIA'S FUTURE**