

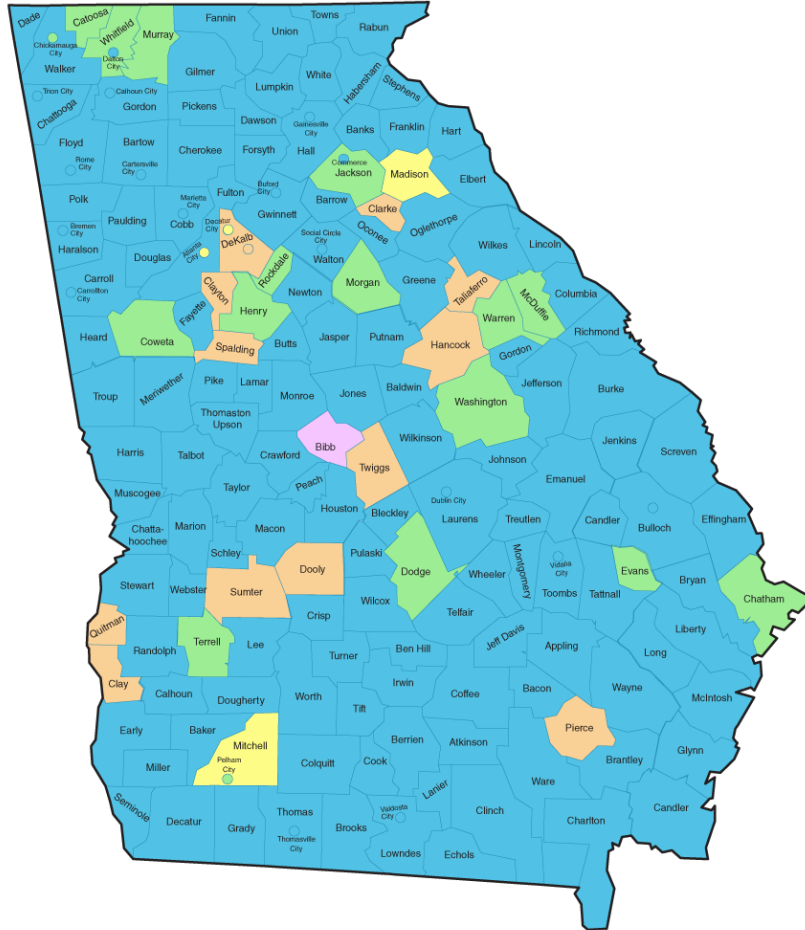
House Education Committee

February 11, 2021

Richard Woods
State School Superintendent



Update on School Reopening



Offering 5 days a week in-person

Hybrid A/B

Delayed in-person reopening

All-Virtual

Varies by grade level

Statewide Strategies to Address Learning Loss

Focused on:

- Continuing to address internet and digital device access for students and educators
- Supporting widespread use of formative assessments
- Reducing the stakes of summative assessments and allowing flexible timing for test administration
- Supporting teacher retention



Statewide Strategies to Address Learning Loss

- Made formative assessment available to every school district at no cost to them
- Trained **15,000+** teachers on virtual learning and doubled the capacity of the Georgia Virtual School
- Direct coaching for lowest-performing schools



Statewide Strategies to Address Learning Loss

- Partnered with Georgia Public Broadcasting to create TV & digital learning resources (gpb.org/learn)
 - Lesson plans for K-12 educators
 - Teacher-made videos of 'hard to teach' standards
 - School Readiness Guides for families
- Provided additional funding to RESAs to ensure continuation of RESA regional services



Statewide Strategies to Address Learning Loss

- Exploring CARES III-funded grant opportunity for school districts specific to learning loss
- Will be targeted to extended school year/school day/summer programs



Districts Addressing Learning Loss



Usage of BEACON Formative Assessment

82

*LEAs using DRC BEACON
to diagnose learning
loss*

Spotlight On: Stephens County Schools (enrollment: 4,000)

“Reports give detailed, accurate data to guide instruction. Teachers like the domain-specific information in the reports and have found it very useful in setting goals.”

Spotlight On: Houston County Schools (enrollment: 30,000)

Schools were able to use scores to focus on students who needed additional support. The district was able to find schools with the most students in need so they could offer strategic assistance where needed.

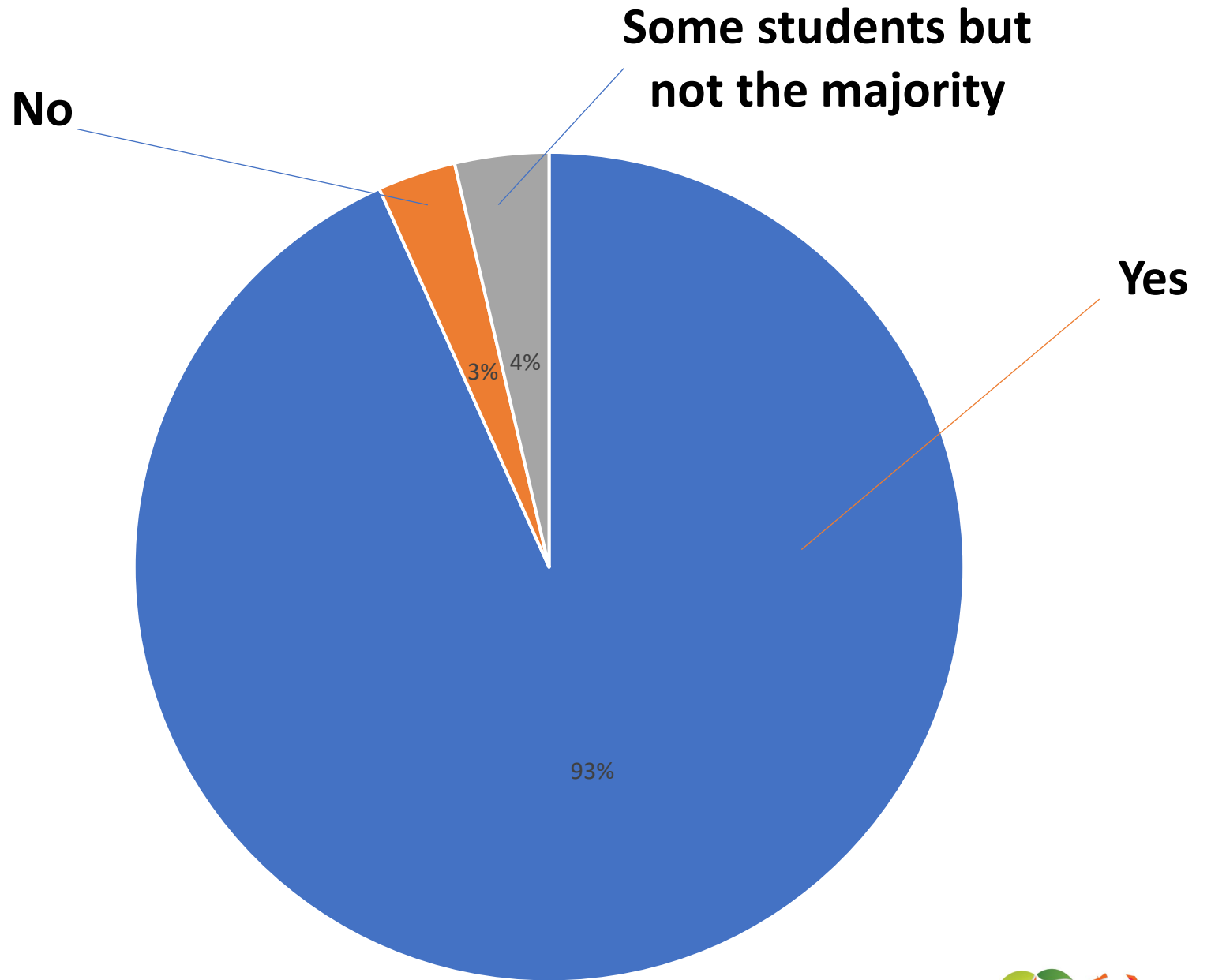
District-Level Strategies to Address Learning Loss

Possible Solutions:

- Formative assessments that provide early-warning systems
- Extended learning time
- Take-home books, text messaging systems, and family involvement programs
- Small group and peer group tutoring



From the beginning of the 2020-21 school year (August 2020) to December 2020, have you administered formative assessments to students at-large to gauge learning loss?



Moving forward, how do you plan to identify and measure the learning loss of students?

90.24%: Administer formative assessments on a regular basis to monitor student progress

71.34%: Administer formative assessments by the end of this school year

64.63%: Administer formative assessments at the start of next school year

48.17% Administer formative assessments at the start of implementing extended instructional opportunities

What other performance measures do you intend to review to identify learning loss?

94.51% Class/course grades & performance

87.80% Teacher input

85.98% Benchmarks

69.51% Credits earned

14.02% Other

Which strategies do you plan to implement this school year to address learning loss?

88.41% Summer schooling/programming

72.56% Virtual credit recovery/remediation

70.12% Reworking class schedules to add opportunities during the school day

54.88% Extended day (before or after school)

15.24% Extended school year

14.02% Other

Continued Efforts to Expand Connectivity

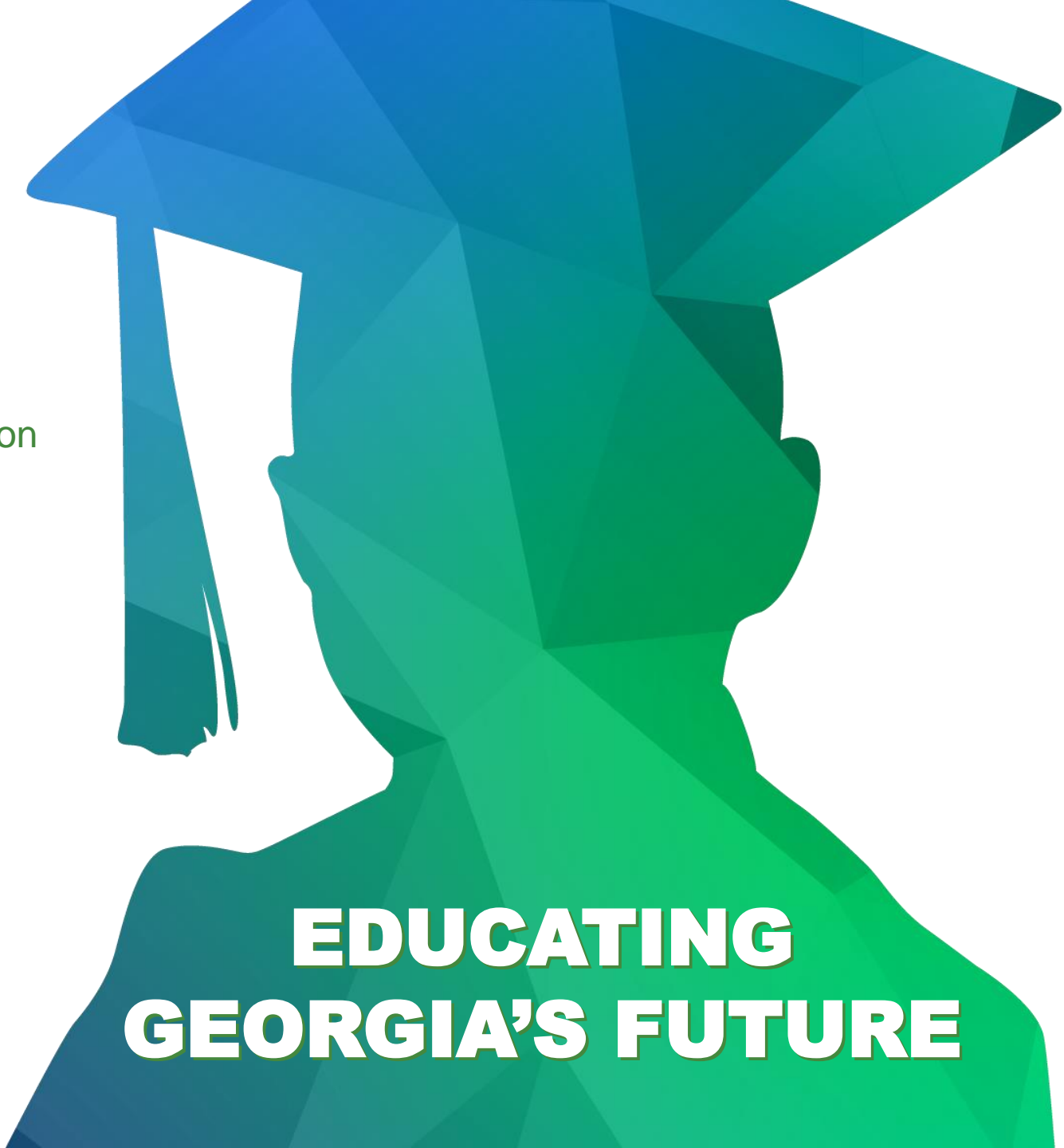
- Doubling bandwidth to every school
- Providing home internet access to 50,000 students living in low-income housing
- Approx. 3,000 school bus WiFi rangers to districts
- Used CARES funding to ensure all schools have broadband signal extenders from school buildings
- \$21 million in digital learning grants to schools
- Formed partnerships w/ major carriers to allow districts to purchase discounted mobile internet plans



www.gadoe.org

   @georgiadeptofed

 youtube.com/c/GeorgiaDepartmentofEducation



**EDUCATING
GEORGIA'S FUTURE**

