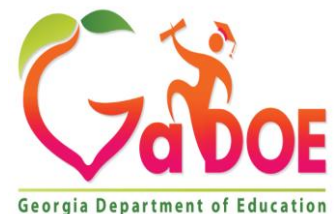




Cross-Functional Monitoring Training For Consolidation of Funds LEAs

FY20

September 16, 2019
consolidation@doe.k12.ga.us

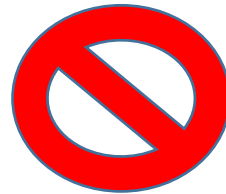
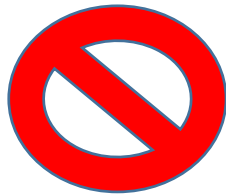


FY20 CFM for Consolidation of Funds LEAs

CFM Document with CoF Addendum

- The Georgia Department of Education is dedicated to providing LEAs with maximum flexibility and autonomy to best serve their schools, staff, students, parents and communities.
- The Consolidation of Funds initiative is one demonstration of this commitment.
- Any state and local education agency that receives federal funds under ESSA, McKinney-Vento and IDEA and chooses to consolidate the funds commits to meeting the intent and purpose of each program through the development, implementation and monitoring of a schoolwide plan.
- The requirements of the schoolwide plan may be found in Section 1114 of ESSA.
- The GaDOE is committed to a supportive and transparent monitoring process and is always looking for opportunities for continuous improvement. Any questions, suggestions or concerns specific to consolidation should be addressed to consolidation@doe.k12.ga.us and copied to the relevant program office(s).

FY20 CFM for Consolidation of Funds LEAs Monitoring Should be Supportive



7 Ways the Department Monitors

1. Review of program application (CLIP)
2. Monitoring of budgets & expenditures
3. Single audit (2 C.F.R. 200.501)
4. On-site monitoring
5. Self-monitoring
6. Desktop monitoring
7. Inventory monitoring

FY20 CFM for Consolidation of Funds LEAs

CFM Document with CoF Addendum

Federal Programs Monitoring

Federal regulations and administrative procedures require that the state educational agency (SEA) monitor the implementation of program requirements and the expenditure of federal funds. Monitoring of federal programs is conducted to ensure that all children have a fair, equal, and significant opportunity to obtain a high-quality education. Monitoring emphasizes accountability for using resources wisely. It serves as a vehicle for the Georgia Department of Education (Department) to help LEAs achieve high-quality implementation of educational programs.

Georgia Department of Education's Federal Programs monitoring process consists of six major components:

- Program Requirements
 - Monitoring of Expenditures
 - Single Audit
 - Physical Inventory Monitoring
 - On-Site Monitoring
 - Self-Monitoring
 - Desktop Monitoring of Approved LEA Budgets

Monitoring Resources

- Monitoring Cycles FY18 - FY22
- FY20 Cross Functional Monitoring Document (Updated 8-27-2019)
- FY20 Cross Functional Monitoring Training (Updated 8-27-2019)

Contact Information

John Wight
Director
Federal Programs
Phone: 404-463-1857
jwight@doe.k12.ga.us

Federal Programs' Links

- Complaint/Comment

External Links

- Elementary and Secondary Education (ESEA)
- Every Student Succeeds Act (ESSA)
- Uniform Grant Guidance
- US Department of Education

REQUIREMENTS	EVIDENCE OF IMPLEMENTATION
1. LEA MONITORING OF PROGRAMS The LEA conducts monitoring of its programs for both implementation and effectiveness of funded strategies/activities at the LEA, school and program levels to ensure compliance with Uniform Grant Guidance and Federal program requirements.	This indicator replaces the indicator in the primary monitoring document for consolidated programs. Any programs, funds, and set-asides not consolidated are subject to the rules and requirements of the original indicator.
1. LEA MONITORING OF PROGRAMS The LEA conducts monitoring of its programs for both implementation and effectiveness of funded strategies/activities at the LEA, school and program levels to ensure compliance with Uniform Grant Guidance and Federal program requirements.	<ol style="list-style-type: none"> Written Procedures for Monitoring Implementation Evidence shall include written procedures used to monitor all critical ESEA/IDEA requirements of all programs and its implementation at the district and schools (where applicable). These procedures will specify how the district will monitor each federal program. <ul style="list-style-type: none"> IDEA - Must include procedures for SST, Child Find, Evaluation/RE-evaluation, Eligibility and Discipline Evidence of Monitoring Implementation Evidence shall include administering the LEA's written procedures for monitoring the implementation of all programs. Must include evidence of implementation of activities and strategies of schoolwide plan: <ul style="list-style-type: none"> Title I, Part A - Must include implementation of the FY20 Equity Action Plan SIG - Minutes of board meeting approving the annual Grant Award Notification and Policies on Federal Grant Administration Title I, Part C - <ol style="list-style-type: none"> Funds not consolidated (Preschool, OSV) - Supplemental Services Tracking Form, home visit documentation, OSV profiles (required), preschool assessments Funds consolidated (K-12) - Tutoring Schedules Title III, Part A- English Learners: <ol style="list-style-type: none"> Must include evidence of implementation of supplemental language instruction program(s) (must be supplemental to language instruction program required by US Office of Civil Rights (OCR), Civil Rights Act of 1964, Equal Education Opportunities Act of 1974, and State/Local Laws) Must include evidence of implementation of EL focused professional learning for all classroom teachers, including teachers that are not ESOL teachers, principals and other school leaders, administrators and other school or community-based organizational personnel Must include evidence of EL parent, family and community engagement activities that enhance or supplement the school's language instruction programs for ELs Title III, Part - Immigrant <ol style="list-style-type: none"> Must include evidence of implementation of SWP activities that are related to socio-cultural adaptation and possible linguistic needs of immigrant students and their families. Evidence of Monitoring Effectiveness Evidence shall include documentation of the effectiveness of grant funded activities for all federal programs, including evidence of effectiveness of activities and strategies of schoolwide plan for all consolidated programs: <ul style="list-style-type: none"> Title I, Part A - Source documentation to support summary data and analysis for determining the effectiveness of all

Monitoring Resources

- Monitoring Cycles FY18 - FY22
- FY20 Cross Functional Monitoring Document

<http://www.gadoe.org/School-Improvement/Federal-Programs/title-i/Pages/Title%20Programs%20Monitoring.aspx>

FY20 CFM for Consolidation of Funds LEAs

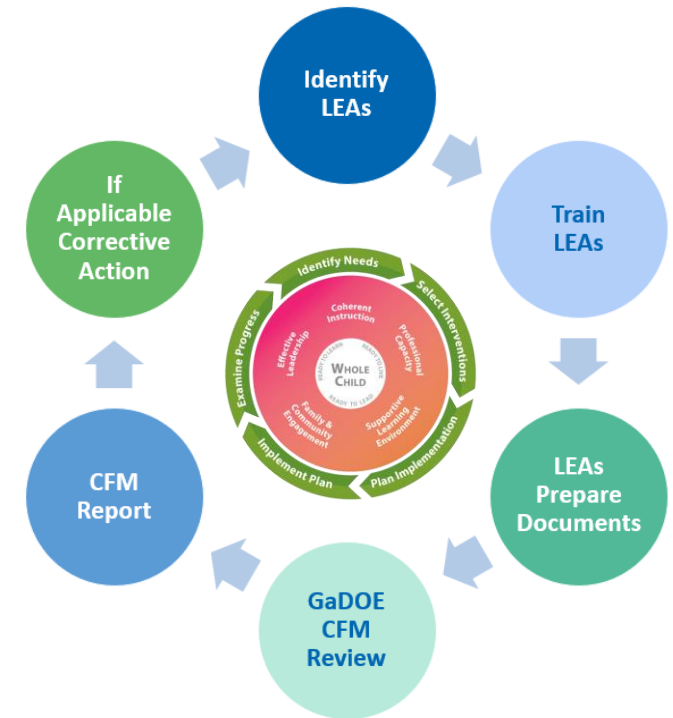
Monitored LEAs

Cohort 1		
Calhoun City	Cartersville City	Madison
Cohort 2		
Dougherty		
Cohort 3		
Berrien	Bryan	Clarke
Coweta	Effingham	Fulton
Lamar	Tattnall	Walker

FY20 CFM for Consolidation of Funds LEAs

The Purpose of Monitoring

- Monitoring of federal programs is conducted to ensure that all children have a fair, equal, and significant opportunity to obtain a high-quality education.
- Monitoring emphasizes accountability for using federal resources wisely.
- Monitoring serves as a vehicle for the Department to help LEAs achieve high quality implementation of educational programs utilizing the LEAs' federal allocations.



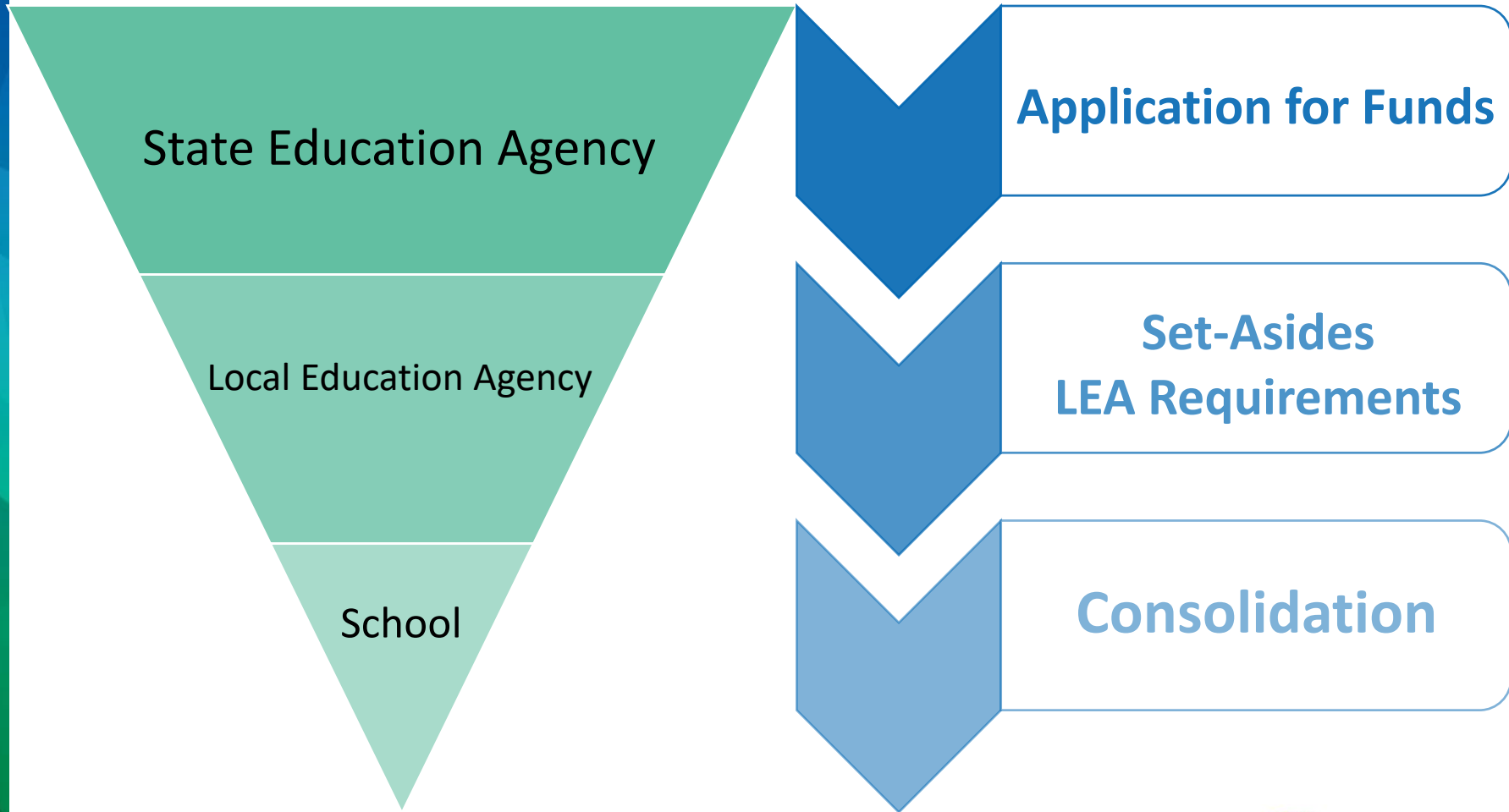
§200.331

FY20 CFM for Consolidation of Funds LEAs

The Purpose of Monitoring

- Title I, Part A - Improving the Academic Achievement of the Disadvantaged
- Title I, Part A - Parent and Family Engagement
- Title I, Part C - Education of Migratory Children
- Title I, Part D - Programs for Neglected or Delinquent Children
- Title I, School Improvement - 1003(a)
- Title I, School Improvement Grants (SIG) - 1003(g)
- Title II, Part A – Supporting Effective Instruction
- Title III, Part A - Language Instruction for English Learners and Immigrant Students
- Title IV, Part A - Student Support and Academic Enrichment (SSAE)
- Title V, Part B - Rural Education Achievement Programs (REAP)
- Title IX, Part A - Education for Homeless Children & Youth
- Individuals with Disabilities Education Act of 2004 (IDEA)

FY20 CFM for Consolidation of Funds LEAs Levels of Accountability



FY20 CFM for Consolidation of Funds LEAs

Levels of Accountability

Formula Grants

- SWP Components
- Parent & Family Engagement
- Intents and Purposes
 - Title I, Part A
 - Title I, Part D – Subpart 2
 - Title II, Part A
 - Title III, Part A EL
 - Title III, Part A Immigrant
 - Title IV, Part A
 - Title V, Part B

Discretionary & Competitive Grants

- SWP must reflect State Plan
 - Title I, Part C (Implementation Plan)
- SWP must reflect Application
 - Title I – SIG 1003(g) (Grant App.)
 - Title IV, Part B – 21st CLCC (Grant App.)
 - McKinney- Vento (Grant App.)
- SWP must reflect Statute
 - Title I – SIG 1003(a)
 - IDEA 611 & 619

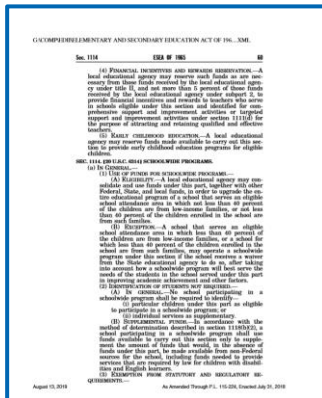
FY20 CFM for Consolidation of Funds LEAs Consolidation of Funds & the SWP

Needs
Assessment

Plan for
Implementation

Monitoring for
Effectiveness

FY20 CFM for Consolidation of Funds LEAs Statute, Regulations, Non-Regulatory Guidance



ESSA 2015



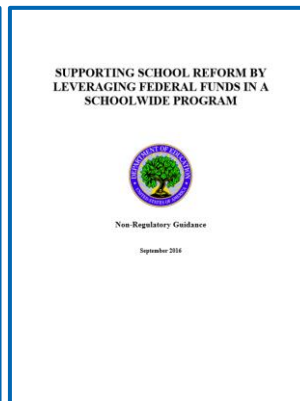
34 CFR 200.29



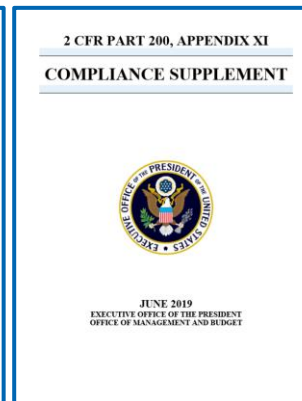
2004 Federal Register



2008 Non-Regulatory Guidance

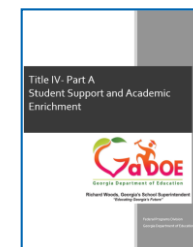
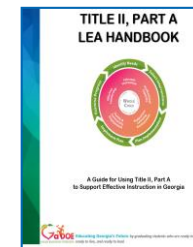
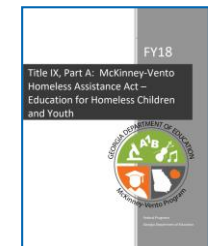
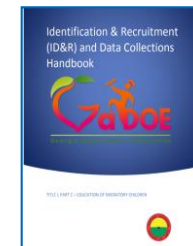
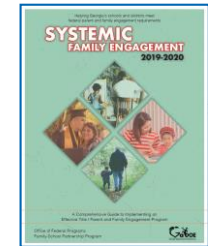
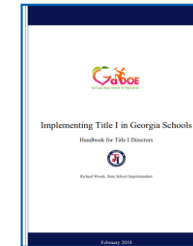
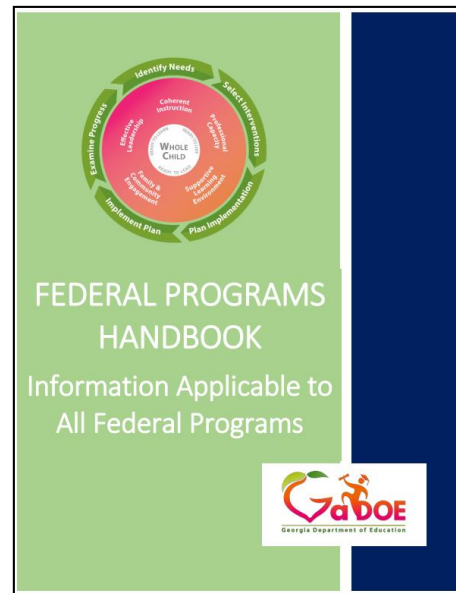
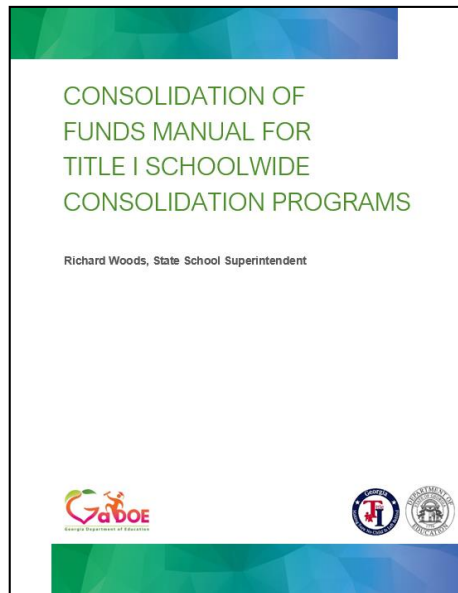


2016 Non-Regulatory Guidance



2019 Compliance Supplement

FY20 CFM for Consolidation of Funds LEAs GaDOE Resources



FY20 CFM for Consolidation of Funds LEAs Process

- FY20 CFM Rubric & Addendum will be used for monitoring
- CFM Teams will focus on reviewing documents from FY20
 - The LEA will self-select documentation to support SWP, I&P, Fund 150 Budget
 - Any unconsolidated funds are subject to full monitoring and may require a look at FY19 and FY20
 - FY19 & FY20 Expenditure Detail should be uploaded in SLDS– Due 2 Weeks Prior to Monitoring
 - Confidential Student Information will be submitted another way
 - Documentation will include evidence of implementation and effectiveness
 - Emails, Memos, Dated meeting agendas, Dated sign-in sheets, Checklists with comments, Record of physical inventory of equipment, Fiscal documentation, Websites, Achievement Results, Other Reports, Other forms of documentation

FY20 CFM for Consolidation of Funds LEAs

Indicator 1.1

1. LEA MONITORING OF PROGRAMS

The LEA conducts monitoring of its programs for both implementation and effectiveness of funded strategies/activities at the LEA, school and program levels to ensure compliance with Uniform Grant Guidance and Federal program requirements.

This indicator replaces the indicator in the primary monitoring document for consolidated programs. Any programs, funds, and set-asides not consolidated are subject to the rules and requirements of the original indicator.

1. Written Procedures for Monitoring Implementation
Evidence shall include written procedures used to monitor all critical ESEA/IDEA requirements of all programs and its implementation at the district and schools (where applicable). These procedures will specify how the district will monitor each federal program.
 - IDEA – Must include procedures for SST, Child Find, Evaluation/RE-evaluation, Eligibility and Discipline

FY20 CFM for Consolidation of Funds LEAs

Indicator 1.2

1. LEA MONITORING OF PROGRAMS

The LEA conducts monitoring of its programs for both implementation and effectiveness of funded strategies/activities at the LEA, school and program levels to ensure compliance with Uniform Grant Guidance and Federal program requirements.

This indicator replaces the indicator in the primary monitoring document for consolidated programs. Any programs, funds, and set-asides not consolidated are subject to the rules and requirements of the original indicator.

2. Evidence of Monitoring Implementation

Evidence shall include administering the LEA's written procedures for monitoring the implementation of all programs. Must include evidence of implementation of activities and strategies of schoolwide plan:

- Title I, Part A – Must include Implementation of the FY20 Equity Action Plan
- SIG - Minutes of board meeting approving the annual Grant Award Notification and Policies on Federal Grant Administration
- Title I, Part C –
 - a. Funds not consolidated (Preschool, OSY) - Supplemental Services Tracking Form, home visit documentation, OSY profiles (required), preschool assessments
 - Funds consolidated (K-12) - Tutoring Schedules
- Title III, Part A- English Learners
 - a. Must include evidence of implementation of supplemental language instruction program(s) [must be supplemental to language instruction program required by US Office of Civil Rights (OCR), Civil Rights Act of 1964, Equal Education Opportunities Act of 1974, and State/Local Laws]
 - b. Must include evidence of implementation of EL focused professional learning for all classroom teachers, including teachers that are not ESOL teachers, principals and other school leaders, administrators and other school or community-based organizational personnel
 - c. Must include evidence of EL parent, family and community engagement activities that enhance or supplement the school's language instruction programs for ELs
- Title III, Part - Immigrant
 - a. Must include evidence of implementation of SWP activities that are related to socio-cultural adaptation and possible linguistic needs of immigrant students and their families.

FY20 CFM for Consolidation of Funds LEAs

Indicator 1.3

1. LEA MONITORING OF PROGRAMS

The LEA conducts monitoring of its programs for both implementation and effectiveness of funded strategies/activities at the LEA, school and program levels to ensure compliance with Uniform Grant Guidance and Federal program requirements.

This indicator replaces the indicator in the primary monitoring document for consolidated programs. Any programs, funds, and set-asides not consolidated are subject to the rules and requirements of the original indicator.

3. Evidence of Monitoring Effectiveness

Evidence shall include documentation of the effectiveness of grant funded activities for all federal programs, including evidence of effectiveness of activities and strategies of schoolwide plan for all consolidated programs:

- Title I, Part A - Source documentation to support summary data and analysis for determining the effectiveness of all federally funded activities/strategies, including the FY19 Equity Action Plan
- Title I, Part C - Program Evaluation Template; data disaggregation of migrant compared to non-migrant; migrant PFS compared to migrant non-PFS
- Foster – Effectiveness of SWP in supporting Foster subgroup including comparison of Foster care subgroup performance with non-foster care subgroup
- Homeless – Effectiveness of SWP in supporting homeless subgroup including comparison of homeless subgroup performance with non-homeless subgroup
- Title II, Part A – For any funds not consolidated in FY19 - Source documentation (summary data and analysis) to support effectiveness determination in the FY19 Title II, Part A Effectiveness Budget Attachment that explains the effectiveness of each Title II, Part A funded strategy/activity in addressing one or more of the LEA's prioritized needs from the FY19 District Improvement Plan.
- Title III, Part A
 - a. Evidence of increase in English Language proficiency and academic achievement of English Learners (Must include data from Access and Georgia Milestones - CCRPI: Progress Towards Proficiency Progress Points and Closing the Gaps). Additional data may be provided (MAP, digital language learning resources, etc.)
 - b. Effectiveness of EL focused professional learning for all classroom teachers, including teachers that are not ESOL teachers, principals and other school leaders, administrators and other school or community-based organizational personnel
 - c. Effectiveness of EL parent, family and community engagement activities that enhance or supplement the school's language instruction programs for ELs
- Title IV, Part A – Evidence of ongoing consultation with required community-based partners

FY20 CFM for Consolidation of Funds LEAs

Indicator 2.1

2. CONSOLIDATED LEA IMPROVEMENT PLAN(CLIP) and SCHOOLWIDE (SWP)

The LEA ensures that it complies with the provision for submitting an annual application to the SEA and revising the LEA's plans as necessary to reflect substantial changes in the direction of the LEA's program.

This indicator replaces the indicator in the primary monitoring document for consolidated programs. Any programs, funds, and set-asides not consolidated are subject to the rules and requirements of the original indicator.

1. CLIP evidence shall include:
 - a. Written procedures for creating, reviewing, and approving the CLIP for all programs, which shall include resolution procedures for unapproved CLIPs
 - b. SIG ONLY - Documentation to support the selection of evidence-based action steps in CLIP
 - c. CLIP Preparation:
 - i. Evidence to verify the participation of required stakeholders and community-based partners in CLIP preparation
 - a. Title IV, Part A—Evidence of initial consultations with community-based partners with relevant and demonstrated expertise in programs and activities for the purposes of progress monitoring and programmatic effectiveness towards meeting intended objectives and outcomes and to include coordinating implementation with other related strategies, programs and activities. (Ongoing consultation checked in Indicator 1.3)
 - ii. Evidence of CLIP preparation

FY20 CFM for Consolidation of Funds LEAs

Indicator 2.2

2. CONSOLIDATED LEA IMPROVEMENT PLAN(CLIP) and SCHOOLWIDE (SWP)

The LEA ensures that it complies with the provision for submitting an annual application to the SEA and revising the LEA's plans as necessary to reflect substantial changes in the direction of the LEA's program.

This indicator replaces the indicator in the primary monitoring document for consolidated programs. Any programs, funds, and set-asides not consolidated are subject to the rules and requirements of the original indicator.

2. Title I, Part A Schoolwide evidence shall include:
 - a. Written procedures for creating, reviewing, and approving the Schoolwide Program Plans which also includes resolution procedures for unapproved Schoolwide Program
 - b. Timely guidance to schools on submission of plan amendments
 - c. Evidence of timely Schoolwide Program plan approval and release of funds
 - d. Source documentation verifying stakeholder involvement in Schoolwide Program Plan development

FY20 CFM for Consolidation of Funds LEAs

(3) Equitable Services

(4) MOE, Comparability, Assessment, EL Participation

3. SERVICES TO ELIGIBLE PRIVATE SCHOOL CHILDREN

3.1 & 3.2

LEA requirement – No variation

4. MAINTENANCE OF EFFORT (MOE) AND COMPARABILITY, ASSESSMENT SECURITY, REPORTING, EL PARTICIPATION

4.1, 4.2 & 4.3

LEA requirement – No variation

FY20 CFM for Consolidation of Funds LEAs

Indicator 5.1.a

5. INTERNAL CONTROLS, EXPENDITURES, INVENTORY, DRAWDOWNS, COST PRINCIPLES

<p>1a. Evidence that all LEA Internal Controls specific to LEA expenditures required to be in writing by 2 CFR Part 200, OCGA, GA Policies, SBOE Rules are present and meet requirements for internal controls:</p> <ul style="list-style-type: none"> a. Effectiveness and efficiency of operations; b. Reliability of reporting for internal and external use; c. Compliance with applicable laws and regulations. d. Ability to meet the following objectives for Federal Awards: <ul style="list-style-type: none"> 1. Transactions are properly recorded and accounted for, in order to 1) Permit the preparation of reliable financial statements and Federal reports; 2) Maintain accountability over assets 2. Transactions are executed in compliance with 1) Federal statutes, regulations, and the terms and conditions of the Federal award that could have a direct and material effect on a Federal program; and 2) Any other Federal statutes and regulations that are identified in the Compliance Supplement 	This indicator replaces the indicator in the primary monitoring document for consolidated programs. Any programs, funds, and set-asides not consolidated are subject to the rules and requirements of the original indicator.		
	CONTROL	FEDERAL REQUIREMENT	GEORGIA REQUIREMENT
	1a. Evidence shall include internal controls required to be in writing by 2 CFR Part 200 and/or State law, policy, or rule.		
	Written Allowability Procedures	2 CFR Sec. 200.302(b)(7)	Not Applicable
	Segregation of Duties	GAO-14-704G	SBOE Rule 160-5-2-.23 & Generally Accepted Accounting Principles (GAAP)
	Written Procurement Procedures	2 CFR Sec. 200.319(c)	SBOE Rule 160-5-2-.23 (Suspension and Debarment) Georgia Procurement Manual Authorized Under OCGA 50-5
	Written Method for Conducting Technical Evaluations of Competitive Proposals and Selecting Recipients	2 CFR Sec. 200.320(d)(3)	Georgia Procurement Manual Authorized Under OCGA 50-5
	Written Conflict of Interest Policy	2 CFR Sec. 200.318(c)(1)	OCGA 45-10 ; Georgia Procurement Manual Authorized Under OCGA 50-5
	Written Personal Compensation Policies (Time and Effort to include salaries, substitutes, and stipends)	2 CFR Sec. 200.430	Not Applicable
	Written Stipend Policy	2 CFR Sec. 200.474(b)	SBOE Rule 160-3-3.04 Written Travel Policy
	Procedures to support suspension and debarment is checked prior to making purchases above \$25,000 threshold from single vendor	(34 CFR 85.110)	SBOE Rule 160-5-2-.23

FY20 CFM for Consolidation of Funds LEAs

Indicator 5.1.b

5. INTERNAL CONTROLS, EXPENDITURES, INVENTORY, DRAWDOWNS, COST PRINCIPLES

1b. Evidence that the LEA maintains accounting records that are supported by source documentation and costs are allowable under applicable laws and regulations. Expenditures meet the following standards including, but not limited to:

- Segregation of duties in review and authorization.
- Reconciles all applicable reports – expenditure, budget, etc.
- Allowable under schoolwide plan
- Expenditures used to support Intent and Purpose/SWP are allocable and supported by source/implementation documentation.
- Align with approved Fund 150 budget.
- Maintain oversight of contracts/purchase orders for contracted services.
- Avoid conflict of interest.
- Provides time stamped documentation of verifying vendors against suspension and debarment database.
- Follow state/local procedures and/or policies related to competition and methods of procurement.

This indicator replaces the indicator in the primary monitoring document for consolidated programs. Any programs, funds, and set-asides not consolidated are subject to the rules and requirements of the original indicator.

1b. Evidence shall include:

- Copy of FY19 and FY20 Payroll & Expenditure Detail Reports for every program organized by site, function and object (if applicable, with LEA Chart of Accounts crosswalk).
 - Sample Expenditure Packets to demonstrate that consolidated purchases were used to support activities and interventions included in the schoolwide plan. Samples should be comprehensive to show implementation of the schoolwide plan and labeled to indicate which program(s) intent and purpose is being demonstrated. Source Documentation may include: purchase orders, invoices, contracts/ contract deliverables, agendas, receipts, travel authorizations, pre-approval,
 - Copy of special approval documentation (capital expenses, transfer of funds, consolidation of administrative funds, etc.).
 - Copy of single audit reports for last two years available.
 - Copy of FY19 Completion Report and FY19 general ledger for each federal program
- Title IV, Part A – Expenditures selected to demonstrate the intent and purpose of the program should also collectively across the LEA demonstrate equity in addressing 1) Well Rounded, 2) Safe and Healthy, 3) Effective Use of Technology. If using the purchase of technology to show equity and intent and purpose, PD for technology must also be included.

Any funds not consolidated, including district level set-asides, are subject to the full indicator.

FY20 CFM for Consolidation of Funds LEAs

Indicators 5.2 & 5.3

5. INTERNAL CONTROLS, EXPENDITURES, INVENTORY, DRAWDOWNS, COST PRINCIPLES

2.a Inventory Internal Control
2.b Inventory

Inventory procedures and records must be maintained for equipment purchased in the last five years with non-consolidated funds.
See 5.2 on original document if applicable.

5. INTERNAL CONTROLS, EXPENDITURES, INVENTORY, DRAWDOWNS, COST PRINCIPLES

3.a Cash Management Internal Controls
3.b Cash Management

LEA requirement – No variation

FY20 CFM for Consolidation of Funds LEAs

Sections 6-8

6. TITLE I, PART A - WITHIN DISTRICT ALLOCATION PROCEDURES

6.1 & 6.2	LEA requirement – No variation
6.3	Not Applicable

7. PROFESSIONAL QUALIFICATIONS

7.1, 7.2, 7.3 & 7.4	LEA requirement – No variation
---------------------	--------------------------------

8. TITLE I, PART A - NOTICE TO PARENTS

8.1	LEA requirement – No variation
-----	--------------------------------

FY20 CFM for Consolidation of Funds LEAs

Sections 9-11

9. TITLE I, PART A - PARENT AND FAMILY ENGAGEMENT

9.1, 9.2, 9.3, 9.4, 9.5, 9.6

LEA requirement – No variation

10. SCHOOL IMPROVEMENT 1003(a) (84.010)

10.1, 10.2, 10.3, 10.4, 10.5, 10.6

LEA requirement – No variation

11. SCHOOL IMPROVEMENT 1003(g) SIG (84.377)

11.1

LEA requirement – No variation

FY20 CFM for Consolidation of Funds LEAs

Sections 12-15

12. SERVICES FOR HOMELESS CHILDREN AND YOUTH

12.1, 12.2, 12.3, 12.4, 12.5, 12.6, 12.7, 12.8	LEA requirement – No variation
---	--------------------------------

13. SERVICES FOR NEGLECTED AND DELINQUENT CHILDREN (Neglected Set-Aside)

13.1, 13.2, 13.3, 13.4, 13.5, 13.6	LEA requirement – No variation
---------------------------------------	--------------------------------

14. PREVENTION AND INTERVENTION PROGRAMS FOR CHILDREN WHO ARE NEGLECTED, DELINQUENT, OR AT-RISK (TITLE I, PART D, SUBPART 2 GRANTEES)

14.1	Only applicable to Taylor County and Troup County
------	---

15. SERVICES FOR CHILDREN IN FOSTER CARE

15.1	LEA requirement – No variation
------	--------------------------------

FY20 CFM for Consolidation of Funds LEAs

Sections 16

16. TITLE IV, PART A - STUDENT SUPPORT AND ACADEMIC ENRICHMENT

16.1, 16.2	LEA requirement – No variation
16.3-16.6	The contents of these indicators are checked in 5.1
16.7	LEA requirement – No variation
16.8	The contents of these indicators are checked in 1.3 and 2.1 <ul style="list-style-type: none">○ Ongoing Stakeholder Communication Checked in 1.3○ Initial Stakeholder Communication Checked in 2.1
16.9	The contents of this indicator are checked in 1.2, 1.3

FY20 CFM for Consolidation of Funds LEAs

Sections 17-19

17. TITLE V, PART B - RURAL AND LOW-INCOME SCHOOLS PROGRAM

17.1	LEA requirement – No variation
17.2	The contents of this indicator are checked in 5.1

18. TITLE III, PART A - LANGUAGE INSTRUCTION FOR ENGLISH LEARNERS (EL) AND IMMIGRANT (IMM) STUDENTS

18.1,	LEA requirement – No variation
18.2, 18.3, 18.4, 18.5	The contents of these indicators are checked in 1.2, 1.3

19. TITLE I, PART C - EDUCATION OF MIGRATORY CHILDREN (MEP) SERVICES

19.1, 19.2, 19.3, 19.5	LEA requirement – No variation
19.4, 19.6	The contents of these indicators are checked in 1.2 and 1.3 (Tutoring Schedules must be included in compliance with State Plan)

FY20 CFM for Consolidation of Funds LEAs

Sections 20-21

20. INDIVIDUALS WITH DISABILITIES EDUCATION ACT (IDEA) - FISCAL INDICATORS

20.1, 20.2, 20.3, 20.4

LEA requirement – No variation

21. INDIVIDUALS WITH DISABILITIES EDUCATION ACT (IDEA) - RESULTS-BASED MONITORING PROGRAM INDICATORS

21.1

LEA requirement – No variation

FY20 CFM for Consolidation of Funds LEAs

Sections 22

22. INDIVIDUALS WITH DISABILITIES EDUCATION ACT (IDEA) – CONSOLIDATION INDICATORS

IDEA Consolidation of Funds in a Schoolwide Program

Evidence that:

1. IDEA funds must be counted as Federal funds for IDEA's excess cost and supplement not supplant calculations, which includes special education maintenance of effort (MOE). The Excess Cost Calculation is reported annually in the Consolidated Application portal by the LEA. The special education MOE calculation is reported on the DE046 report annually and uploaded to the Special Education MOE portal within the Consolidated Application. Both calculations will be reviewed to see that IDEA funds are reported as Federal funds.
2. Schoolwide programs may not exceed what is allowed by the IDEA. First, the LEA determines the amount of funds it received under the IDEA section 611 and 619 programs. Secondly, the LEA must divide the total amount of its IDEA grants by the number of children with disabilities in the jurisdiction of the LEA. Finally, the LEA then multiplies this figure by the number of children with disabilities who will be participating in the schoolwide program. This will be reviewed and approved initially at the time of consolidation budget approval. The formula calculation and expenditures will be reviewed during monitoring, to ensure that each schoolwide program does not exceed what is allowed by the IDEA.
3. Students must receive services in accordance with a properly developed individualized education plan (IEP); and be afforded all of the rights and services guaranteed to children with disabilities and their parents under the IDEA. A sampling of IEPs will be requested ahead of the monitoring review with three business days advance notice. The sampling size will be determined based on the size of the LEA and the number of schools participating. During the monitoring review, the LEAs must provide evidence that student services are being implemented according to the IEPs of each student.

This applies to the schools where LEAs are consolidating funds in schoolwide programs (Fund 150):

1. IDEA Consolidation of Funds in a Schoolwide Program
Evidence
 1. Excess Cost Calculation Portal showing that IDEA funds are reported as federal funds.
 2. Schoolwide Program IDEA Formula is used at each participating school. Evidence would include IDEA expenditure total consolidated in each school. Detailed expenditure reports are not needed.
 3. Evidence for student IEP services may be teacher schedules, student schedules, FTE reporting, or any other supporting documentation that proves services have taken place. LEAs may choose the supporting documentation, as long as, it clearly shows that student services are being provided according to IEPs.

FY20 CFM for Consolidation of Funds LEAs

Contact Us

Consolidation@doe.k12.ga.us

Shaun Owen – sowen@doe.k12.ga.us

Carly Covic Ambler – cambler@doe.k12.ga.us

Title I, Part A	Title I, 1003 (a)	Title I, 1003 (g)	Title I, Part C	Title I, Part D	Title II, Part A
Ken Banter kbanter@doe.k12.ga.us	Gary Wenzel gwenzel@doe.k12.ga.us	Patty Rooks prooks@doe.k12.ga.us	Israel Cortez jcortez@doe.k12.ga.us	Eric McGhee emcghee@doe.k12.ga.us	Terri Still tstill@doe.k12.ga.us
Title III, Part A	Title IV, Part A	Title IV, Part B	Title V, Part B	McKinney-Vento	IDEA 611 & 619
Meg Baker mbaker@doe.k12.ga.us	Dawna Hatcher dhatcher@doe.k12.ga.us	Deirdre Smith dsmith@doe.k12.ga.us	Eric McGhee emcghee@doe.k12.ga.us	Eric McGhee emcghee@doe.k12.ga.us	Amber McCollum amccollum@doe.k12.ga.us

FY20 CFM for Consolidation of Funds LEAs

Contact Information

Consolidation@doe.k12.ga.us

Craig Geers Associate Superintendent, Federal Programs	404-657-1793	cgeers@doe.k12.ga.us
Shaun Owen Deputy Chief of Staff, Consolidated Federal Initiatives, and State Ombudsman, Federal Programs	404-971-0096	sowen@doe.k12.ga.us
John Wight Director, Federal Programs	404-463-1857	jwight@doe.k12.ga.us
Faya Paul Director, School and District Effectiveness	404-463-2314	fpaul@doe.k12.ga.us
Zelphine Smith-Dixon, Director, Special Education Supports and Services	404-987-1568	zsmith@doe.k12.ga.us

FY20 CFM for Consolidation of Funds LEAs Feedback

Consolidation@doe.k12.ga.us



<https://bit.ly/2LephaM>

Preparing students for life.

www.gadoe.org



@georgiadeptofed



youtube.com/c/GeorgiaDepartmentofEducation



Georgia Department of Education

