

EOPA Application Overview

May 3, 2018

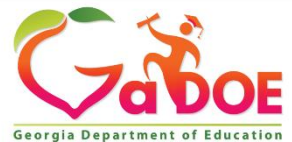
Irish Saxton

Data Collection Specialist

Georgia Department of Education

Phone: 404-657-0536

isaxton@doe.k12.ga.us



TODAY'S TOPICS

EOPA Application Overview

LIVE DEMO

- Accessing the EOPA Application
- Using the EOPA Application
 1. Pathway Completers 'Online Entry'
 2. Add Students Online
 3. Upload Records
- Reports
 - Pathway Completers Skills Assessment Test Takers
 - Pathway Completers District Summary and Signoff Report
 - EOPA Eligibility Report
- Student Pathway Course History

Overview of EOPA Application

The End of Pathway Assessment (EOPA) Test Takers application is prepopulated from Student Class with students identified as pathway completers during the current school year.

These students must be reported in the current year Student Class collection and must report a completed CTAE Pathway course with credit this school year.

WHICH STUDENTS APPEAR IN THE EOPA APPLICATION?

Current Year Student Class

**Student must be reported in current year
Student Class collection in grades 9-12.**

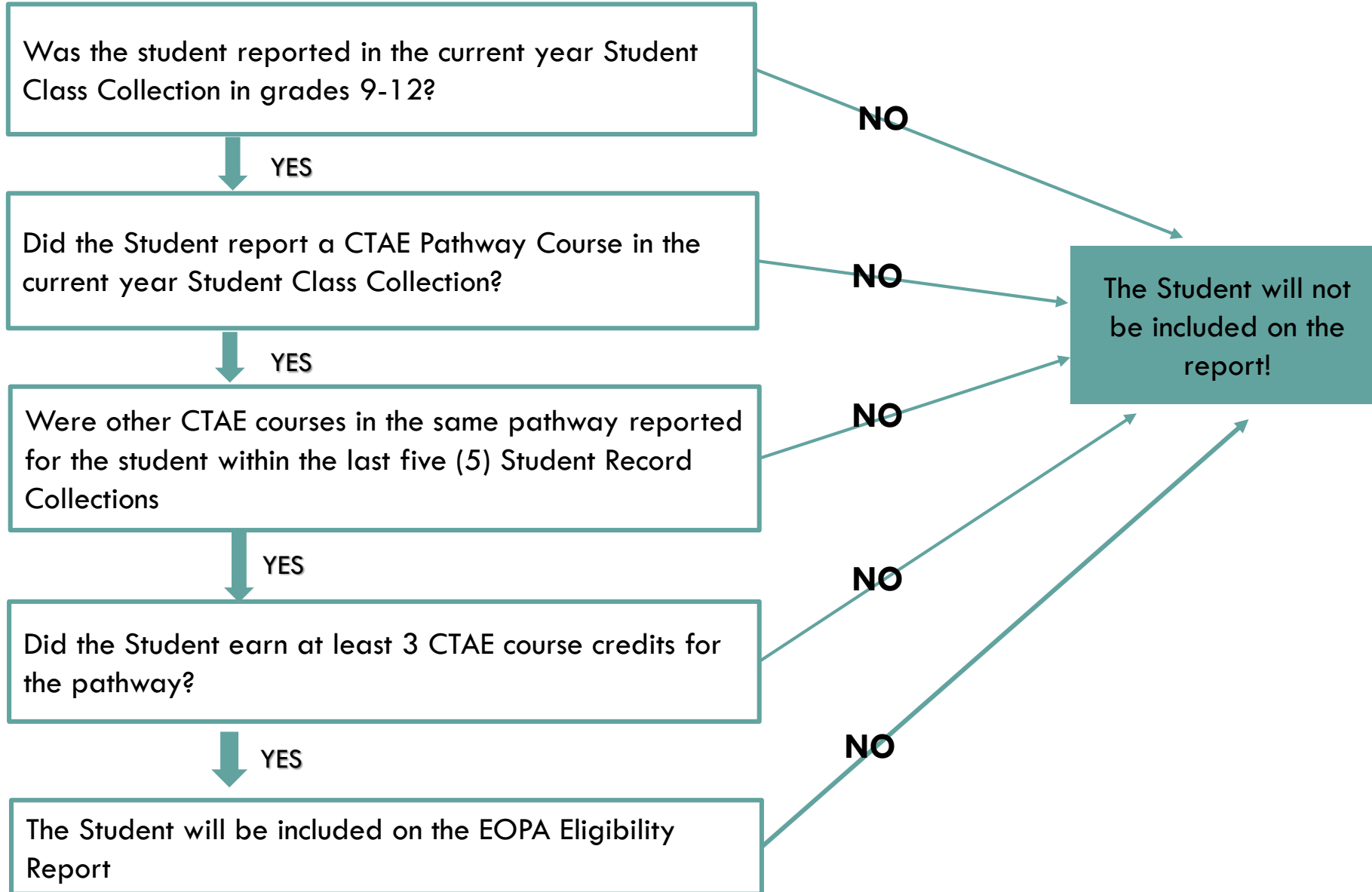
**STUDENT EARNED CREDIT
FOR CTAE COURSE IN
CURRENT SCHOOL YEAR**

**One or more course records must
be reported for a student where
credit was earned for CTAE course
tied to a pathway**

**OTHER CTAE COURSES
FOR PATHWAY IN
COURSE HISTORY**

**If a student meets the above
criteria, Other CTAE courses for
that pathway must have been
reported with credits earned
between 2013- and present**

WHICH STUDENTS APPEAR ON THE EOPA ELIGIBILITY REPORT?



EOPA APPLICATION OVERVIEW

EOPA Application Live Demo

EOPA ASSISTANCE



For Questions related to the MYGADOE PORTAL and the EOPA Application (Errors, Uploading, Reports, etc.), please EMAIL the HELPDESK at dticket@doe.k12.ga.us.

For EOPA PROGRAM questions, please contact:

Mamie Hanson (Program Specialist)

Phone 404 657-6279

Email: mhanson@doe.k12.ga.us