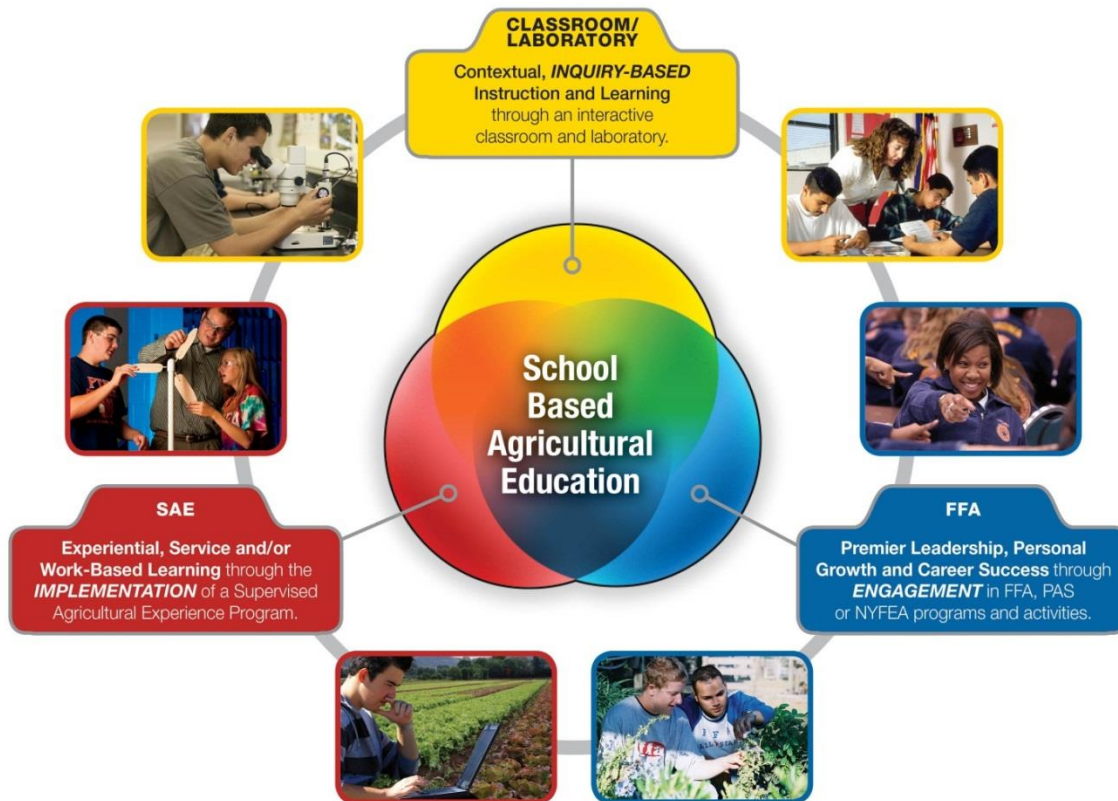


Agricultural Education Update



February 2016





Camp John Hope





NEW RECORD
12 Lowndes
FFA National
Champions



FAIRWAY







Agricultural Education



Agriculture Teacher Program of Work (POW) Evaluations

- Ag Teachers should be working with local administrators to set up a time to review the POW evaluation (some time in April)
- The 2016 POW should be available by April 1st

POW Yes/No	Legend	Item	POW Professional accomplishments/requirements Fill in the POW and click the SAVE button. This does NOT have to be done all at once.	EVAL Select the Yes/No button in red ONLY after the item is complete
Yes		1	The teacher holds a valid teaching certificate in agricultural education or a provisional certificate in agricultural education.	No
Yes		2	The Teacher does not have any after school duties and responsibilities that would conflict with the FFA and SAE activities. <u>*The Agricultural Education Program has three components. The classroom, FFA, and SAE combine to make the complete and balanced program. Students must be trained for Career Development Events and supervised at these activities. The students must have an SAE that requires home and worksite visits by the Agriculture Teacher. These activities occur throughout the school year and during the summer. As a result the Agricultural Education Teacher should not have any after school duties and responsibilities that would conflict with the FFA and SAE activities for which they receive extended day and extended year. This would include athletic events.</u>	No
Yes		3	The teacher will comply with the Agricultural Education Teachers Creed.	No
Yes		4	The teacher will be actively involved in the professional teacher organization, Georgia Vocational Agricultural Teachers Association (GVATA), which is dedicated specifically to agricultural educators in the state.	No
Yes		5	The teacher will attend all area meetings for agricultural education teachers (summer, fall, winter, spring) or the approved make-up activity with prior written approval of the Regional Coordinator.	No
Yes		6	The teacher will attend the Summer Leadership Staff Development Conference.	No
Yes		7	The teacher will attend the Mid-Winter Staff Development Conference.	No
Yes		8	The teacher will conduct at least two advisory committee meetings one of which may be an informal meeting. Membership of the advisory committee will include agricultural industry and community leaders (minimum of seven). The teacher will keep proper advisory committee minutes.	No



Agricultural Education



Agricultural Education
Website
www.gaaged.org

The screenshot shows the homepage of the Georgia Agricultural Education website. At the top, there is a navigation menu with links for Georgia Agricultural Education, Curriculum & SAIL, FFA, GVATA, Young Farmers, Foundation, Alumni, and FFA Camps. Below the navigation is a large banner with three images: a blue rose, two young women in red FFA jackets, and a cow. Text on the banner includes 'ier Leadership | Personal Growth | Career Success' and 'Support Georgia FFA & Ag Ed'. Below the banner, there is a 'Welcome: About Georgia Ag Ed' section with a mission statement and three region-specific links (North Region, Central Region, South Region). To the right is a 'Georgia Ag Ed Login' form with fields for Email (case@gaaged.org) and Password, and a 'Log In' button. Below the login form is an 'Events: Calendar' section with a list of events including 'State FFA CDE Day (Central Region)', 'Ag Ed - Fort Valley State University', 'CDE Legislation Session at the Capitol', 'Ag Ed - Georgia State Capitol', 'Georgia Junior National Livestock Show', 'Ag Ed - Perry, GA', 'FFA Day at the Capitol', 'Ag Ed - Georgia State Capitol', and 'WASHU Career Functioning Research'. At the bottom, there is a 'What's Hot: Featured News & Announcements' section with three news items: 'Greenhand Jamboree & Success Conference Registration', 'Hall of Georgia at FFA Career Show', and 'Book rooms now for Summer Conference!'. The bottom right corner features a 'Twitter: Follow Us' link.

Agricultural Education



- We are excited about the growth of Agricultural Education:
Additional Teachers and/or New Ag Ed Programs
 - 2011 = 9
 - 2012 = 6
 - 2013 = 7
 - 2014 = 7
 - 2015 = 18

PLEASE contact your Region AgEd Office
if you are looking to hire
an agriculture teacher.

We will be glad to help you find one.



Agricultural Education



A Premier Industry Credential for Agricultural Education Students

Supported by the Georgia Agribusiness Council – representing over 820 businesses throughout the state of Georgia



This testimony is to verify that

Reece Bozeman

a member of the Worth County High School FFA Chapter,

successfully demonstrated Technical Skill Attainment & Career Development in the area of

Senior Floriculture

during the 2013-2014 school year
and is hereby entitled to this credential.

Georgia FFA Association – Executive Secretary

Georgia Agribusiness Council - President

GaDOE Agricultural Education – Program Manager

Agricultural Education

You are Invited to Attend:



APRIL 28-30, 2016 MACON, GA



Amplify

Boost your impact

CONVENTION SPEAKERS



Jane Herlong

Sirius XM , best-selling author and professional singer, Jane Herlong, delivers a simple message...work smart, laugh often and live your dream! Combining humor and truth, Jane uses comedy, original Southern stories and

singing to inspire and entertain audiences around the world. Jane and her family live in South Carolina.

Jane Herlong is the convention kickoff speaker, and will address the audience at the opening session on Thursday, April 28, at 7:00 p.m. Learn more about Jane at www.janeherlong.com.

Abbey Gretsch



Athens Christian FFA member Abbey Gretsch is the 16th Georgian to serve as a National FFA Officer. Abbey was elected back in October, and is taking a one year leave of absence from the University of Georgia

to travel more than 100,000 miles sharing the message of the FFA. Abbey served as State FFA Vice President in 2013-2014; competed in the Ag Communications and Extemporaneous Speaking CDEs; and developed a strong beef cattle SAE.

Abbey will speak at the 4th session on Friday, April 29, at 2:30 p.m.

Agricultural Education

Please contact us if we can be of assistance with any needs for your agricultural education program.

Ben Lastly - State FFA Office

(706) 552-4456; blastly@uga.edu

Stan Mitchell – North Region

(706) 552-4468; smitchell@gaaged.org or smitchell@doe.k12.ga.us

Chris Corzine – Central Region

(478) 822-7385; ccorzine@gaaged.org or ccorzine@doe.k12.ga.us

Ira Tucker – South Region

(229) 386-342; itucker@gaaged.org or itucker@doe.k12.ga.us

Chip Bridges – State AgEd

(404) 657-8311; jbridges@doe.k12.ga.us