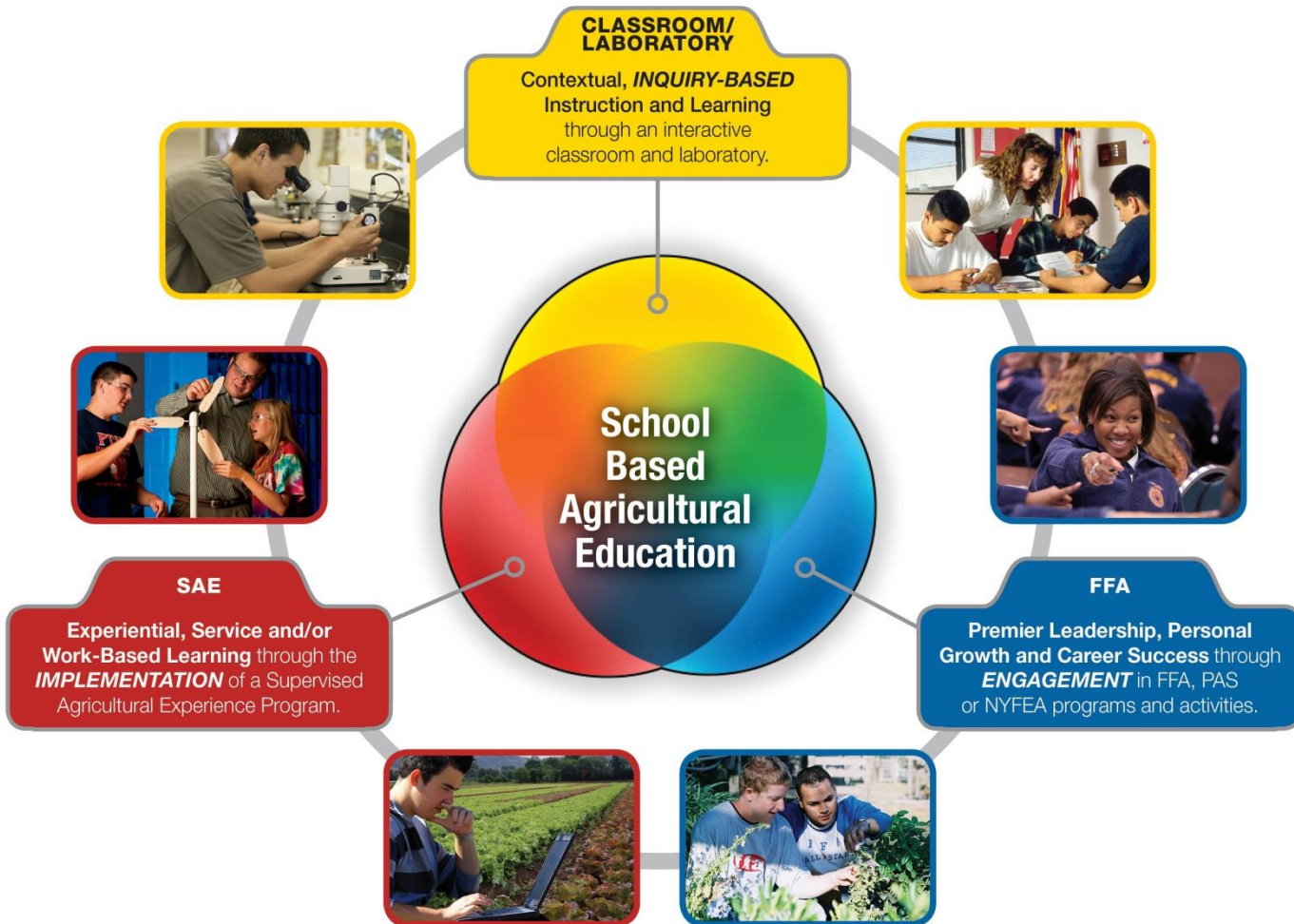


Georgia Agricultural Education



Our mission is to be a premier learning system that delivers agricultural, environmental and leadership education programs and services.



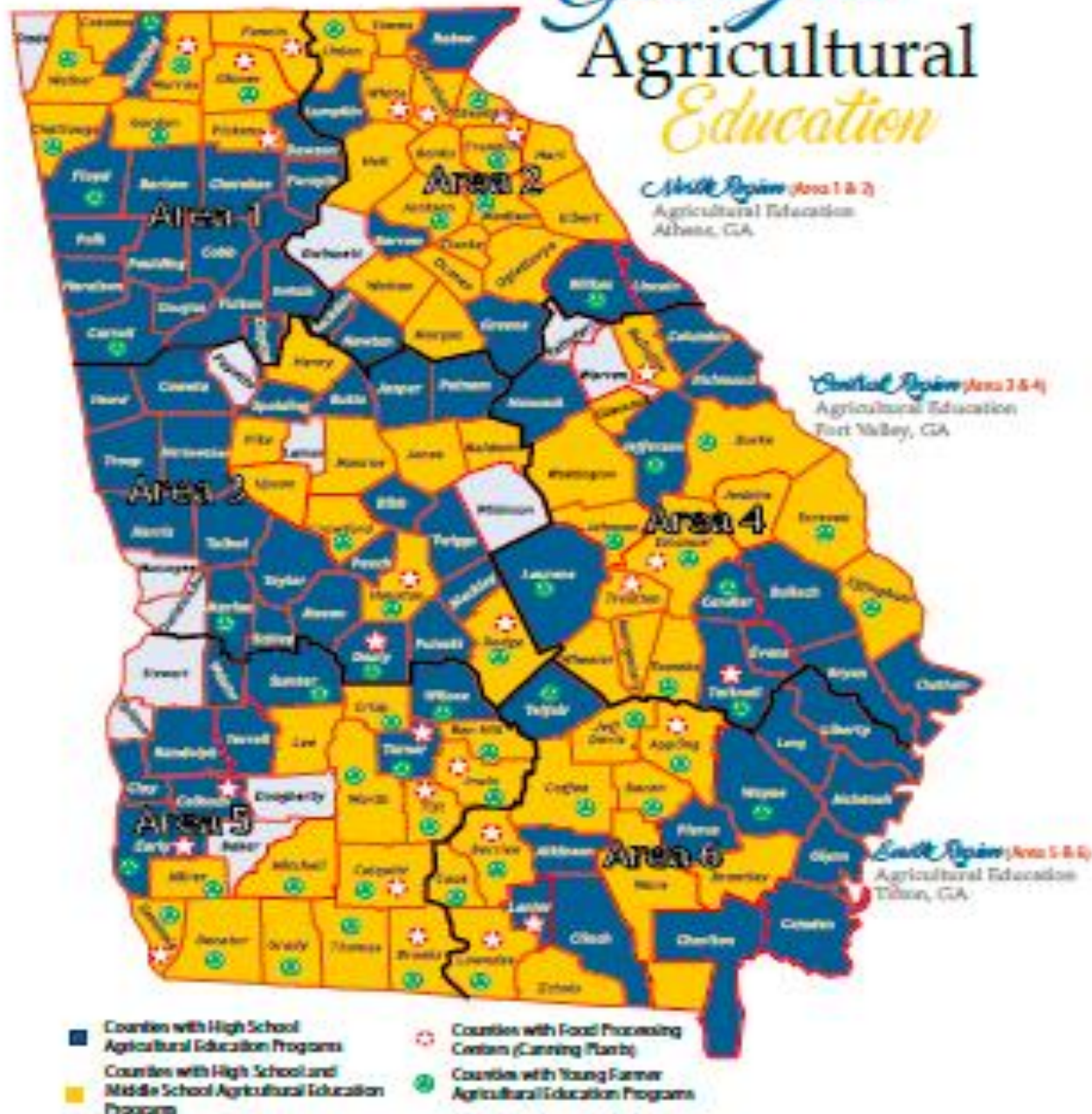


Georgia Agricultural Education

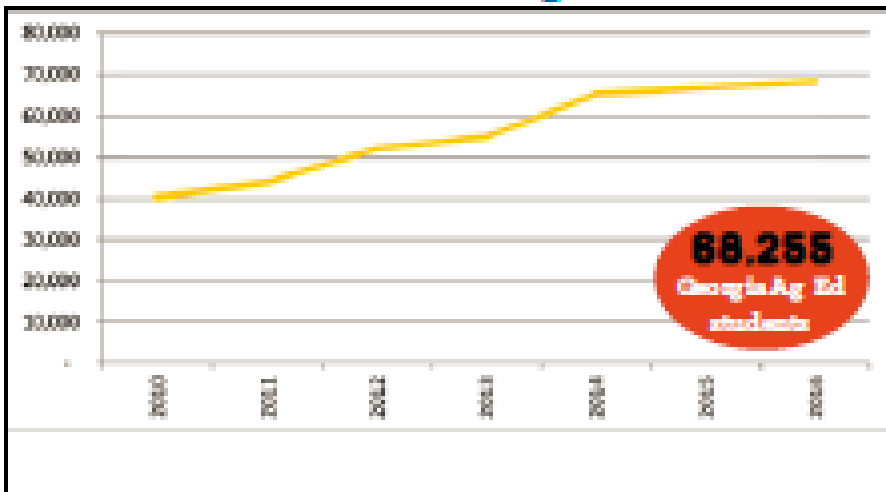
- Agricultural Education is most effective when conducted as a Program and not simply a course or pathway of courses
- Every Agricultural Education Program in Georgia should strive to meet minimum standards and adhere to some general guidelines in order to operate
- Supervised Agricultural Experiences (SAE's) are a vital part of the total program and should always be included in a true agricultural education program
- The focus is always on the “total” program (Agricultural Education) and not individual components. --- FFA is NOT a club.



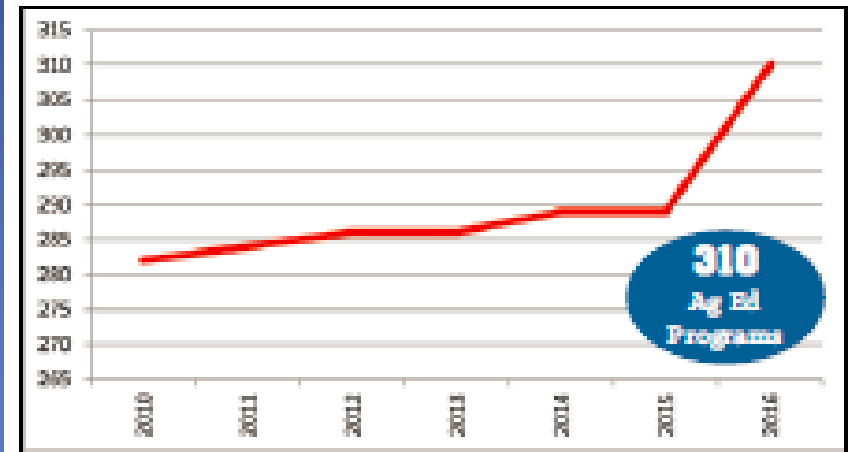
Georgia Agricultural Education



Students Enrolled in Ag Education

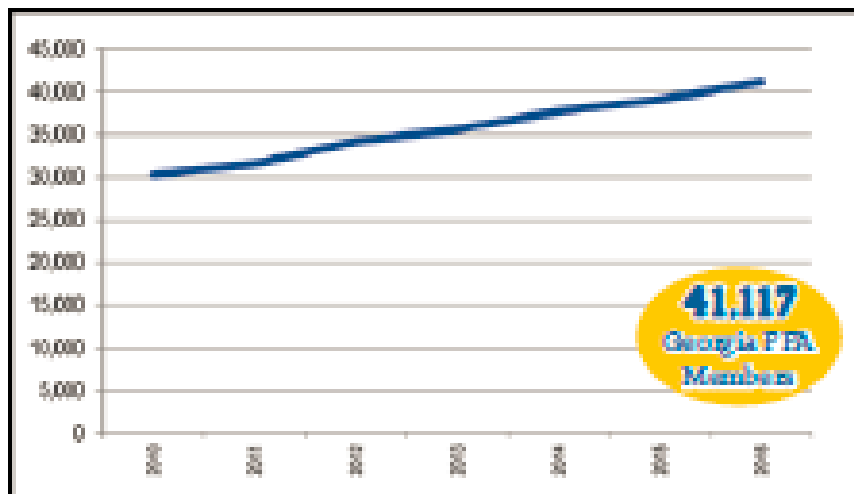


Program Growth



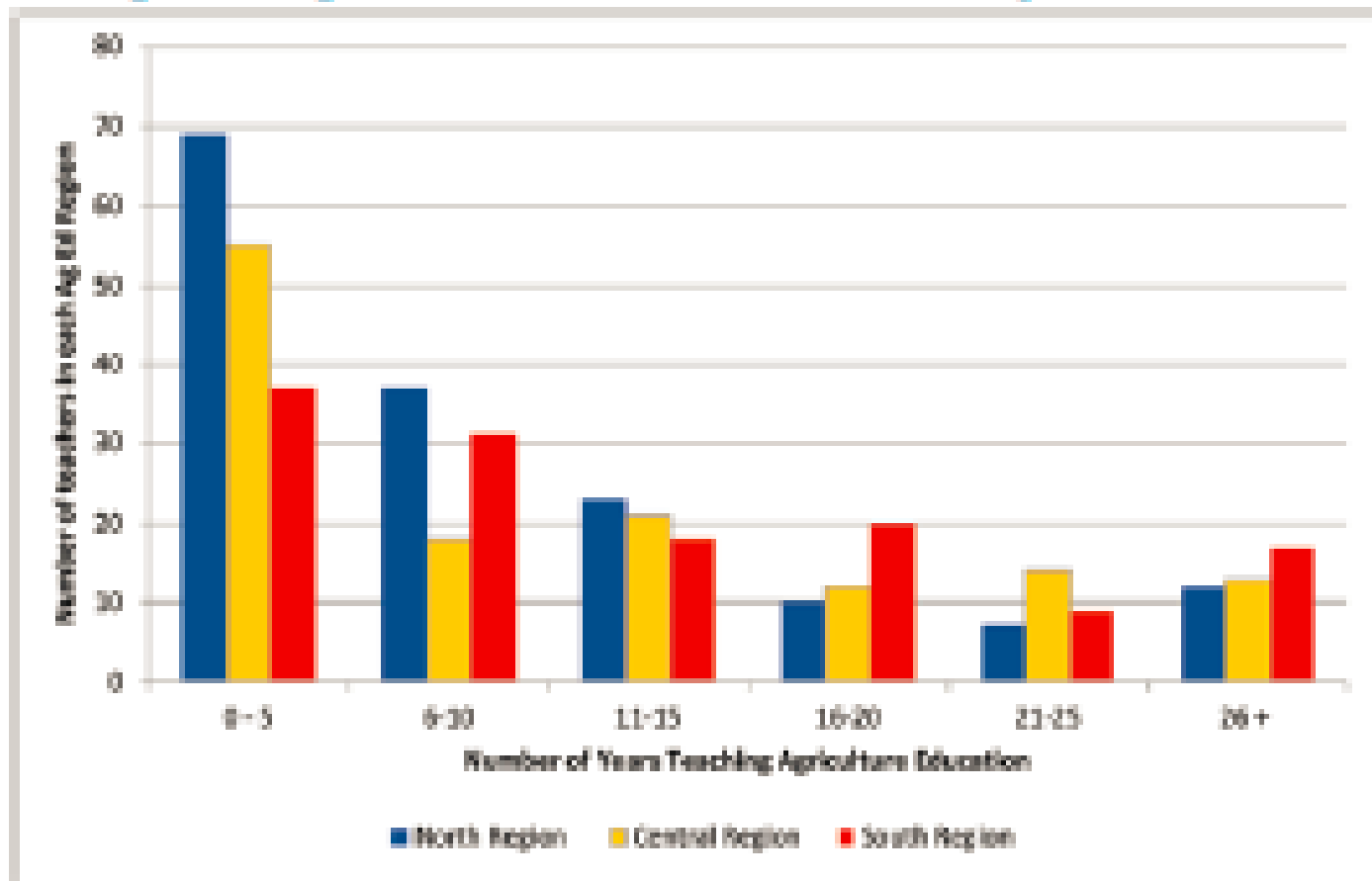
Agricultural Education Program 3 year GROWTH

Membership Increase



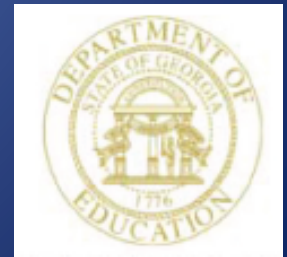
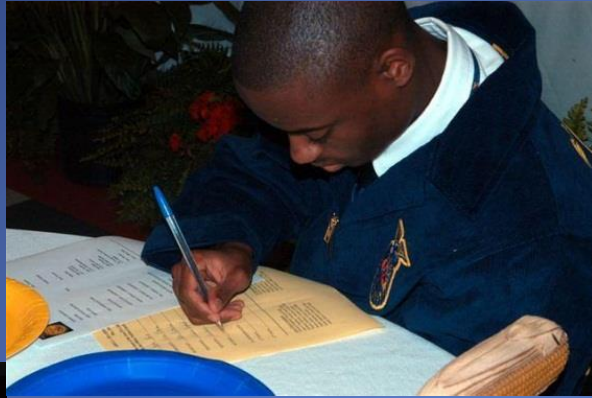
- Increase in student enrollment by 10,000
- Increase in FFA participation by 6,000
- Increase in total number of programs by 24
- Increase in number of Agriculture Teachers by 49

Georgia Ag Ed Teachers Years of Experience



Direction for Agricultural Education

- Continue to have a primary focus on the complete 3-component model of agricultural education
- Graduate students with training, experiences, and credentials that demonstrate skill attainment in all types of agriculture
- Focus on diversification and improvements in the Supervised Agricultural Experiences (SAE's) for students in the agriculture program
- Continue the tradition of FFA membership growth in Georgia
- Provide a premier award program for students that participate in the FFA events and activities. (increase scholarship opportunities)



Agricultural Education

Please contact us if we can be of assistance with any needs for your agricultural education program.

Ben Lastly - State FFA Office

(706) 552-4456; blastly@uga.edu

Stan Mitchell – North Region

(706) 552-4468; smitchell@gaaged.org or smitchell@doe.k12.ga.us

Chris Corzine – Central Region

(478) 822-7385; ccorzine@gaaged.org or ccorzine@doe.k12.ga.us

Ira Tucker – South Region

(229) 386-342; itucker@gaaged.org or itucker@doe.k12.ga.us

Chip Bridges – State AgEd

(404) 657-8311; jbridges@doe.k12.ga.us