

Welcome

CTAE Leaders

Winter Conference

2012



Dr. John D. Barge, State School Superintendent
"Making Education Work for All Georgians"
www.gadoe.org

2/15/2012

1

Georgia's College and Career Ready Clusters



“Making Education Work for All Georgians”



Dr. John D. Barge, State School Superintendent
"Making Education Work for All Georgians"
www.gadoe.org

2/15/2012

2

House Bill 186

- During the 2011 legislative session the Georgia General Assembly passed House Bill 186
- House Bill 186 mandates that Georgia will align with the 16 Federal Career Cluster framework
- Georgia is adding a 17th Cluster: Energy Systems
- All courses shall include embedded academic standards



Why Career Clusters?

A Career Cluster is a tool for a seamless educational system that:

- blends rigorous academic/technical preparation
- provides career development
- offers options for students to experience all aspects of a business or industry
- facilitates/assists students and educators with ongoing transitions



What Are The 17 Clusters?

Agriculture, Food & Natural Resources

Architecture & Construction

Arts, Audio/Video Technology & Communications

Business Management & Administration

Education and Training

Energy Systems

Finance

Government & Public Administration

Health Science



What Are The 17 Clusters?

Hospitality & Tourism

Human Services

Information Technology

Law, Public Safety, Corrections & Security

Manufacturing

Marketing

Science, Technology, Engineering & Mathematics

Transportation, Distribution & Logistics



Why Integrate Academics (Common Core) Within CTAE?

The Common Core Curriculum Provides:

- Rigorous knowledge and skills needed to succeed in college and/or careers
- Consistent expectations across states for all students
- Relevant content and application of knowledge through high-order thinking skills
- Clear, focused expectations that assist educators in being on the same page



The Aging Workforce

- The baby boomers are leaving America's workforce. Approximately 10,000 will turn 65 every day for the next 19 years.
- CTAE is preparing a highly-skilled sustainable workforce that America's business and industry need to remain globally competitive.



What Are Current Workforce Needs?

Business and Industry partners have indicated that workers need:

- Academic and technical skills
- Strong work ethics
- Job ready soft skills
- Real world work experiences
- Problem solving skills



Why Pathways?

Career Pathways are sub-groupings of occupations and career specialties used as an organizing tool for curriculum design and instruction.

Career Pathways focus on easing and facilitating student transition from high school to work, technical college or a traditional college.



What Are Examples Of Pathways?

Cluster:

Law, Public Safety, Corrections, and Security

Pathways:

Correction Services

Emergency and Fire Services

Security and Protective Services

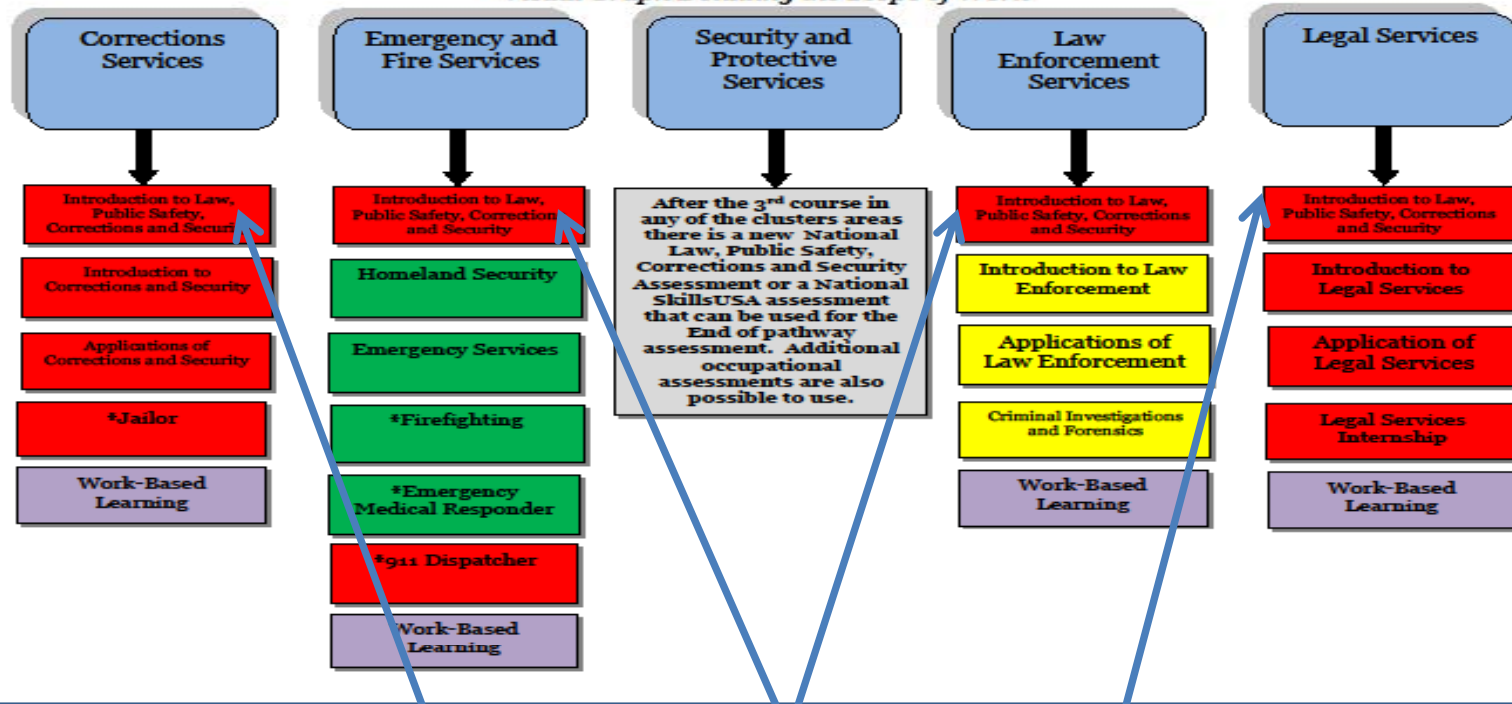
Law Enforcement Services

Legal Services



What Are Examples Of Pathways?

Georgia Law, Public Safety, Corrections, and Security
 Peach State Pathways Conversion to National Career Cluster
Visual Graph Detailing the Scope of Work



Foundation Course



Reviewing Our Existing Curriculum and Pathways

- Seeking industry input and expertise
- Integrating the Common Core standards
- Aligning our courses with the National Assessments and Student Credentialing
- Embedding critical “Soft Skills” in each course



Reviewing our Existing Curriculum and Pathways

- Re-evaluating dual enrollment
- Re-evaluating articulation between DOE, TCSG and USG
- Evaluating academic credit options for CTAE courses



Current Activities

- An Advisory Committee has been formed for each of the 17 clusters
- Committee members include business and industry leaders, administrators, counselors, teachers, etc...
- A State-wide Advisory Committee meeting was conducted on November 30, 2011. Over 350 people attended



Each Individual Cluster Committee Is Addressing The Following Questions



Dr. John D. Barge, State School Superintendent
"Making Education Work for All Georgians"
www.gadoe.org

2/15/2012

16

Committee Questions

- Is the _____ cluster a viable option for Georgia's students?

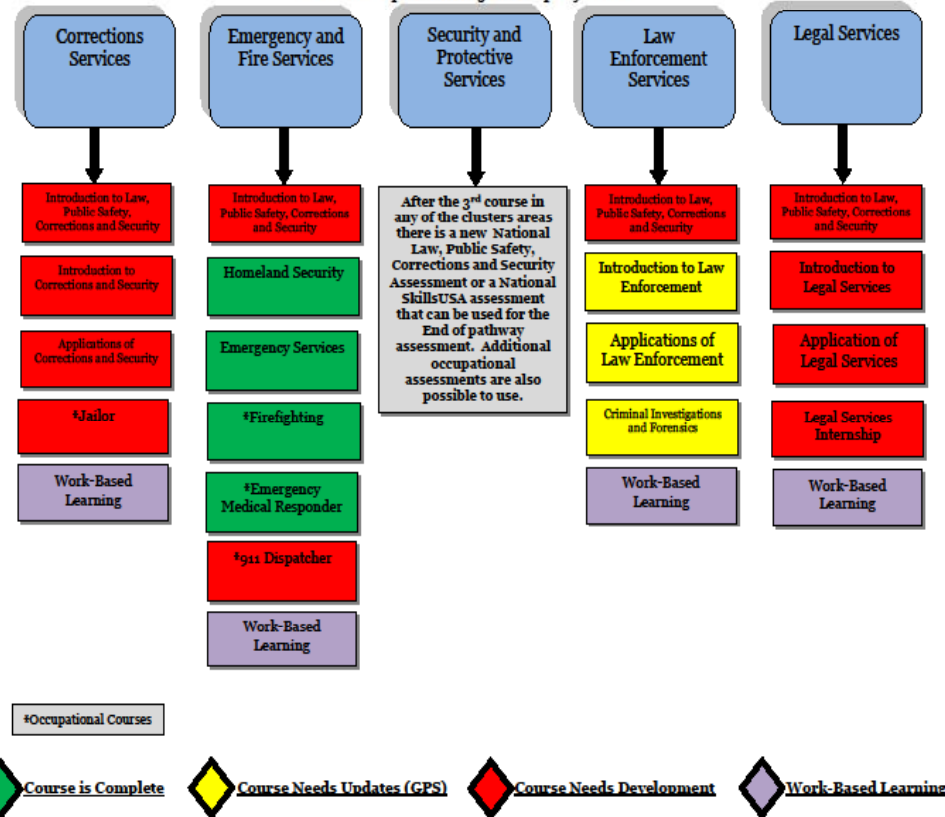


Dr. John D. Barge, State School Superintendent
"Making Education Work for All Georgians"
www.gadoe.org

Committee Questions

- Are the proposed pathways relevant for Georgia's students?

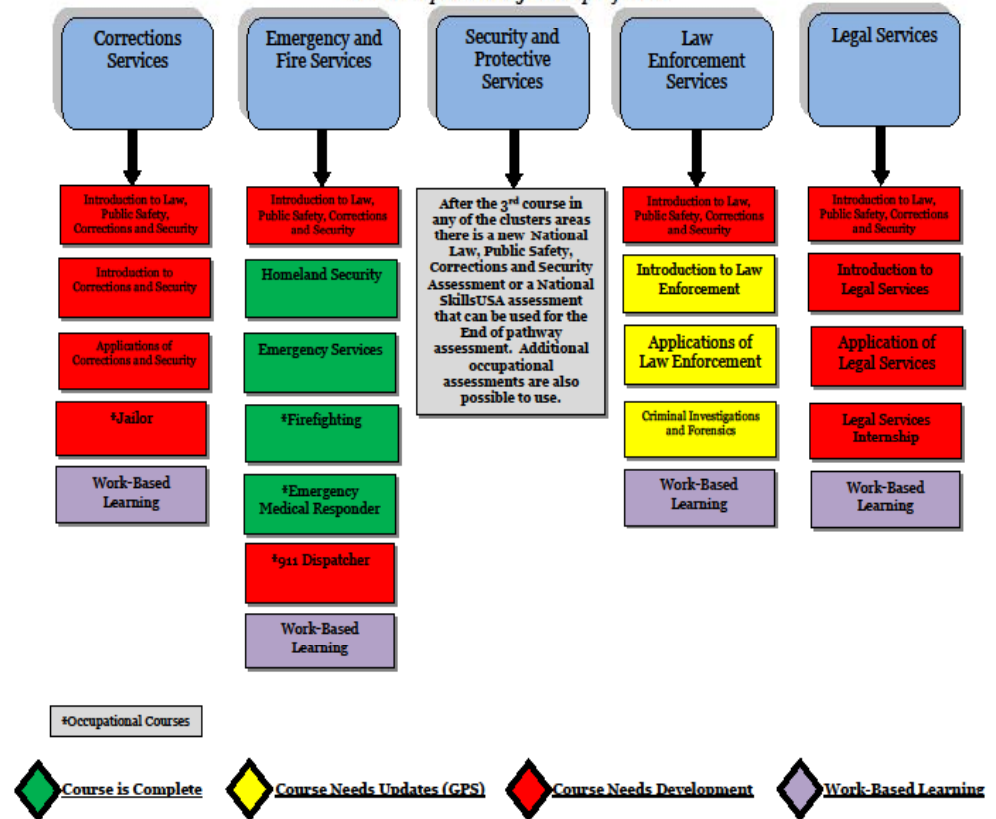
Georgia Law, Public Safety, Corrections, and Security
 Peach State Pathways Conversion to National Career Cluster
 Visual Graph Detailing the Scope of Work



Committee Questions

- Are the proposed courses in each of the pathways appropriately titled and sequenced?

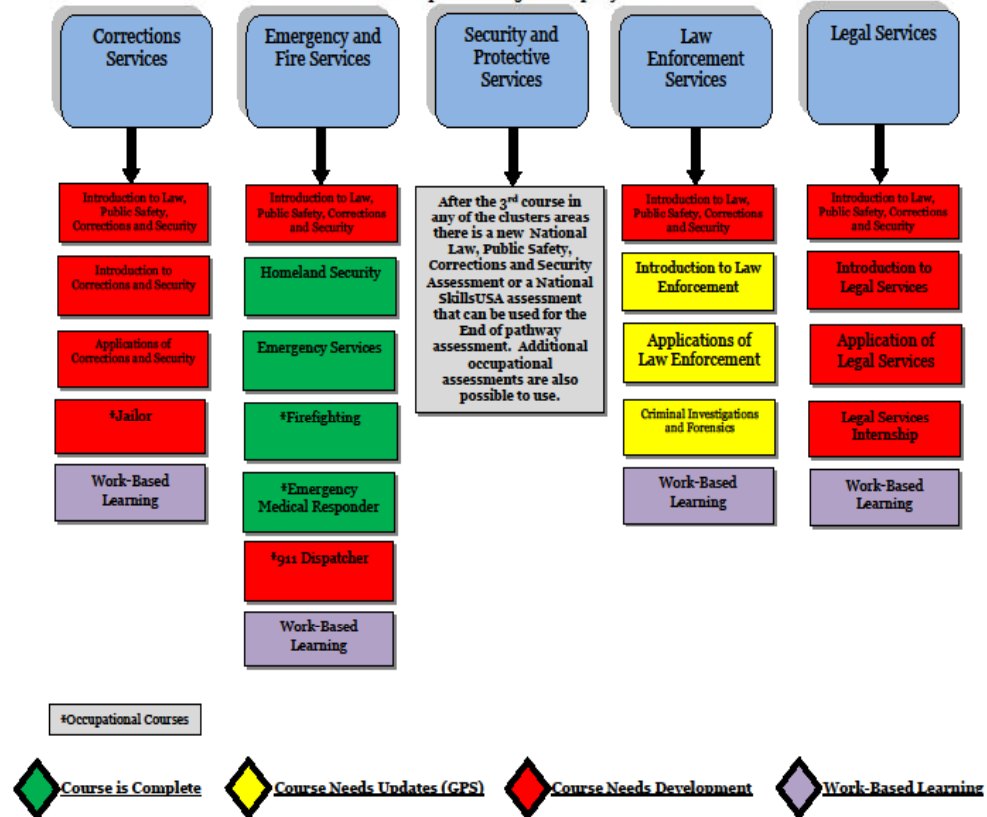
Georgia Law, Public Safety, Corrections, and Security
Peach State Pathways Conversion to National Career Cluster
Visual Graph Detailing the Scope of Work



Committee Questions

- What should the content of the foundation course include?

Georgia Law, Public Safety, Corrections, and Security
 Peach State Pathways Conversion to National Career Cluster
 Visual Graph Detailing the Scope of Work



Committee Questions

- **What are the five most important technical skills that a worker in these occupations should possess?**



Committee Questions

- **What are the five most important soft skills that a worker should possess?**



Committee Questions

- Is it important for a student to earn an industry recognized certificate or credential?



Additional Committees

- **Assessment – a committee has been formed to review the CTAE assessment program**
- **Counseling and Advisement – a committee is working on the K-12 model as required by HB 186**



What Are Our Next Steps?

- **We are continuing to meet with the 17 cluster advisory committees:**
 1. Review the standards for the foundation course
 2. Integrate academics “Common Core Performance Standards” into each course
 3. Integrate soft skills into each course
- **Teams of educators will soon begin writing the curriculum materials**



What Are Our Next Steps?

- We are developing a K-12 counseling and advisement plan that will assist students to learn about as well as select a career focus

We will have three levels of development

- K – 5 – Career Awareness
- 6 – 8 – Career Exploration
- 9 – 12 – Career Development



Individual Graduation Plan Example

Individual Graduation Plan



Name _____ Class of _____

Current Area of Interest: Health Science/Therapeutic Services (Nursing)- This **INDIVIDUAL GRADUATION PLAN** can serve as a guide, along with other career planning materials, as learners continue on a career path. Courses listed within this plan are only recommended coursework and should be individualized to meet learner's educational potential and career goals.

EDUCATION LEVELS	GRADE	English/Language Arts 4 credits	Math 4 credits	Science 4 credits*	Social Studies 3 credits	Health/ Physical Education 1 credit	Electives 4 credits	Career and Technical Courses for Therapeutic Services: Nursing Pathway 3 elective credits**	SAMPLE Occupations Relating to this Career Pathway
------------------	-------	------------------------------------	-------------------	-----------------------	-----------------------------	---	------------------------	--	--

Career-related assessments administered and Individual Graduation Plan initiated for all learners by the end of the 8th grade (BRIDGE compliance)

SECONDARY	9	9 th Literature & Composition	Math I, GPS Algebra I or GPS Geometry	Physical Science	American Government/ Civics	Health	Elective or Modern Language Latin**	Elective or Introduction of Healthcare Science	Anesthesiologist Assistant Athletic Trainer Audiologist Certified Nursing Assistant Chiropractor Dental Assistant / Hygienist Dental Lab Technician Dentist Exercise Physiologist Home Health Aide Licensed Practical Nurse Massage Therapist Medical Assistant Occupational Therapist / Asst Optometrist Physical Therapist / Assistant Physician's Assistant Psychologist Recreation Therapist Registered Nurse Respiratory Therapist Surgical Technician	
	<i>On-going advisement with learner and family (BRIDGE compliance) to include postsecondary admissions assessment level; dual enrollment; work-based learning</i>									
	10	10 th Literature & Composition	Math II, or GPS Geometry or GPS Advanced Algebra	Biology	World History	Personal Fitness	Elective or Modern Language Latin**	Introduction of Healthcare Science or Application of Therapeutic Services		
	<i>On-going advisement with learner and family (BRIDGE compliance) to include postsecondary admissions assessment level; dual enrollment; work-based learning</i>									
	11	11 th American Literature/ Composition	Math III, GPS Advanced Algebra or Advanced Math	Chemistry	United States History	Elective	Elective or Modern Language Latin**	Application of Therapeutic Services or Nursing Essentials		
<i>On-going advisement with learner and family (BRIDGE compliance) to include postsecondary admissions assessment level; dual enrollment; work-based learning; possible exit point to career or postsecondary studies</i>										
12	Advanced Composition	Advanced Math or *Career Pathway Related Math	Human Anatomy/ Physiology	Economics/ Business/ Free Enterprise	Elective	Elective or Modern Language Latin**	Elective or Nursing Essentials			
POSTSECONDARY	<ul style="list-style-type: none"> Learners who will continue their education at one of Georgia's Public Technical Colleges should prepare to take the COMPASS assessment for admissions to those institutions. Learners who will continue their education at one of Georgia's University System 4-year state college or research university institutions should prepare to take the SAT or ACT for admissions. Check with your selected institution for specific admissions requirements. Georgia's 2-year colleges do not require the SAT/ACT for admissions. 									

* 4th Science may be used to meet both the required science and required elective in CTAE sequence of courses

**Students must complete 2 years (2 credits) of the same Modern Language/Latin for admission to Georgia Board of Regents colleges/universities; Students must complete CTAE pathway and take end of pathway assessment. See the back for a more specific description of graduation requirements.

Some courses do not follow the same sequence at the local levels.

Legend: Golden rod=core requirements; Green=Electives

Dr. John D. Barge, State School Superintendent
 "Making Education Work for All Georgia Students"



Dr. John D. Barge, State School Superintendent
 "Making Education Work for All Georgians"
www.gadoe.org

Individual Graduation Plan Example

The sample **NURSING PATHWAY** occupations listed below meet two out of three of GDOE definitions for high-demand, high-wage and high-skilled. www.occsupplydemand.org

Occupation Specialties	Level of Education Needed	Average Salary	Annual Average Openings in Georgia
Registered Nurse	Associate Degree	\$53, 893	3,340
Health Educator	Master Degree	\$53,290	90
Medical and Health Services Manager	Bachelor Degree + Work Experience	\$74,486	330
Occupational Therapist	Master Degree	\$58,427	100

Go to [GACollege411](http://GACollege411.org) at www.GACollege411.org for more information about your education and career planning, including valuable financial information (grants and scholarships including HOPE Program, loans, AND FAFSA and CSS forms).

Current GEORGIA Graduation Rule for student entering the 9 th grade in fall of 2008-2009	Credits	Postsecondary Programs of Study Technical College	Postsecondary Programs of Study University of Georgia System
English/Language Arts Mathematics *Science Social Studies ** Career, Technical & Agricultural Education and/or Modern Language/Latin, and/or Fine Arts Health & Physical Education Electives TOTAL	4 4 4 3 3 1 4 23	TBA	TBA
* 4 th Science may be used to meet both the required science and required elective in CTAE sequence of courses ** Students must complete 3 units in a pathway to complete CTAE pathway and take the end of pathway assessment. Student must complete 2 years of the same Modern Language/Latin for admission to Georgia Board of Regents colleges/universities.		NOTE: Learners planning to attend a technical college should prepare to take the COMPASS assessment for placement/admissions.	NOTE: Learners planning to attend a Georgia 4-year college/university should prepare to take the ACT/SAT.

Dr. John D. Barge, State School Superintendent
"Making Education Work for All Georgia Students"

NURSING PATHWAY

An estimated 3.6 million new health care wage and salary jobs will be created by 2014, more than in any other industry. Registered nurses make up the largest health care occupation with 2.4 million jobs. Students interested in pursuing a nursing career will have excellent job opportunities; employment of RNs is projected to increase more than 27% by 2014, creating the second largest number of new jobs among all occupations.

Three out of five RN jobs are in hospitals, but rapid job growth is expected in hospital outpatient facilities, such as same-day surgery, rehabilitations, and chemotherapy. Growth is also expected in nursing care facilities and in home health care. RNs with a bachelor degree will have better job prospects than those with either an associate degree or a diploma.

Those considering a nursing career should have a strong desire to help others, a genuine concern for the welfare of patients and clients, and an ability to deal with people of diverse backgrounds in stressful situations. If you take the sequenced healthcare courses recommended in this education and career plan, you can receive the American Heart Association Basic Life Support Certification, American Red Cross CPR and First Aid Certification, Georgia Medical Care Foundation Certification for Nursing Assistant, and the National Health Care Foundation Skills Standards Certification upon graduation from high school. There are many and varied areas of nursing, including Licensed Practical/Vocational Nurse (LPN/LVN) and Registered Nurse (RN). Most nursing programs require education beyond high school, including diploma programs, associate degree programs, and bachelor degree programs and beyond.

Once you complete all your education and training, you will need to be licensed as an Advanced Practice Nurse, a Registered Nurse (RN), or a Licensed Practical/Vocational Nurse (LPN/LVN). As in many other professions, nurses must be licensed in the state where they work. You must take the NCLEX-RN® or NCLEX-PN® license examination to become a licensed nurse. For more information about nurse licensure and public protection, consult the National Council of State Boards of Nursing.



Dr. John D. Barge, State School Superintendent
"Making Education Work for All Georgians"
www.gadoe.org

Implementation

- **Currently HB 186 mandates that the new pathways will be implemented during the 2012-2013 school year**
- **All students currently enrolled in a high school will follow the current pathways and courses**
- **The new pathways will be phased in beginning with the foundation course with the additional courses introduced as they are completed**



House Bill 713

... so as to delay implementation of some career and college readiness initiatives until the 2013-2014 school year; to require career education in grades kindergarten through 12; to change the mandated assessment for postsecondary readiness to the end of the eleventh grade;...



For Additional Information

Georgia DOE CTAE Web Page
http://www.gadoe.org/ci_cta.aspx

National Career Clusters Web Site
www.careerclusters.org



Dr. John D. Barge, State School Superintendent
"Making Education Work for All Georgians"
www.gadoe.org

If you have any questions or suggestions for the Career, Technology and Agricultural Education team please feel free to contact us.

**David Turner
Interim Director**

**Career, Technical and Agricultural Education
Georgia Department of Education**

Dturner@doe.k12.ga.us

Dwayne Hobbs

**Interim Program Manager – Program Delivery
Career, Technical and Agricultural Education
Georgia Department of Education**

Dhobbs@doe.k12.ga.us

Emily Spann

**Program Manager – Transition and Development
Career, Technical and Agricultural Education
Georgia Department of Education**

Espann@doe.k12.ga.us

John “Chip” Bridges

**Program Manager – Agricultural Education
Career, Technical and Agricultural Education
Georgia Department of Education**

Jbridges@doe.k12.ga.us

Charles Banks

**Program Manager – Accountability
Career, Technical and Agricultural Education
Georgia Department of Education**

Cbanks@doe.k12.ga.us

