

Finding CTAE Data Nontraditional Core Indicators 6S1 and 6S2



Dr. John D. Barge, State School Superintendent
"Making Education Work for All Georgians"
www.gadoe.org

Finding CTAE DATA (08-09 & 11-12)

Business & Industry

Learn about STEM
Support CTAE Programs

[Read More](#)

Education Stakeholders

State Board of Education Rules
Proposed Rulemakings
State Board Meetings - eBoard
School Safety Resources
Consolidated Calendar 2013

[Read More](#)

9/20/2012 Superintendent Barge Names Parent Advisory Committee

9/12/2012 SHAPE Honor Roll Schools

[View All News Items...](#)

Educational Agencies



Data & Reports

Career, Technical, and Agricultural Education Reports

Financial Reports

School Reports

Adequate Yearly Progress (AYP)

MyGaDOE Login

Learning

Georgia Standards

Testing/Assessments

GOVERNOR'S OFFICE
STUDENT ACHIEVEMENT

Departments

Organization Structure
Curriculum, Instruction and Assessments
External Affairs and Policy
Finance and Business Operations
Race to the Top (RT3)
School Improvement
School Turnaround
Technology Services

Programs

Career Pathways
Charter Schools
Career, Technical, and Agricultural

GaDOE

[About Us](#)
Policies
State Board of Education
Working at GaDOE
Employee Login

Perkins IV Legislation

- Sec 113 Accountability
- (2) Indicators of Performance
- (B) (v) Student participation in, and completion of, career and technical education programs that lead to employment in non-traditional fields



Definitions/Core Indicators 6S1 and 6S2

- **Nontraditional Participation (Core Indicator 6S1)** represent those students who in grades 9-12 enrolled in CTAE program pathways that lead to employment in nontraditional fields during the reporting year.
- **Nontraditional Completion (Core Indicator 6S2)** represent those students in the 12th grade who complete pathways that lead to employment in nontraditional fields during the reporting year.



Home » Georgia Schools » All Districts

2008 - 2009

Georgia Profile

CTAE

NCLB / AYP

Report Card

Title I Annual Reports

Special Education

Tutoring Services

State of Georgia

Enrollment

Perkins IV

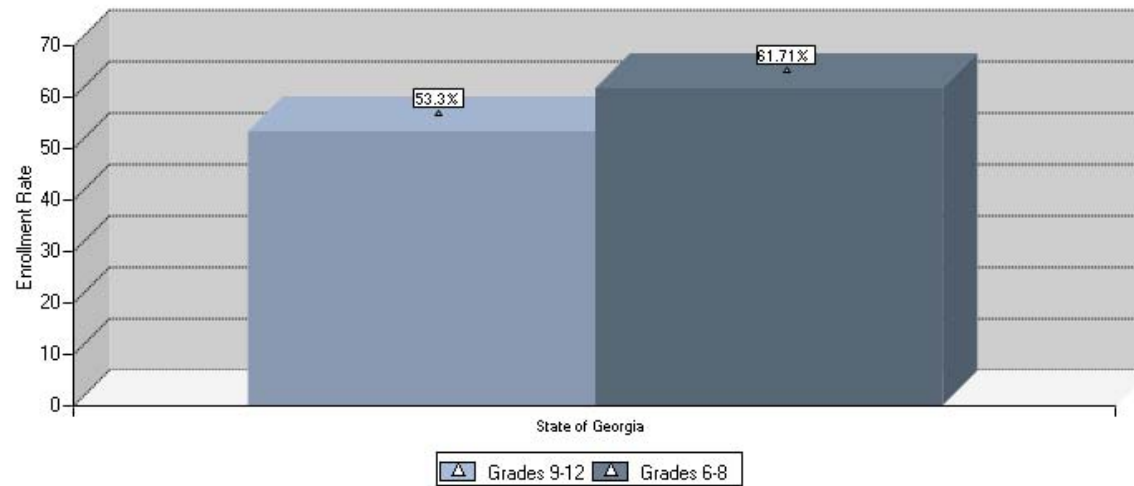
2008-2009 CTAE : Career, Technical and Agriculture Education

CTAE Enrollment

FY 2009

State of Georgia

	Grades	
	6th - 8th	9th - 12th
Number of Unduplicated Students Enrolled in all Courses	410935	519528
Number of Unduplicated Students Enrolled in CTAE Courses	219009	320625
CTAE Enrollment Rate	53.3%	61.71%



2008 - 2009

Georgia Profile

CTAE

NCLB / AYP

Report Card

Title I Annual Reports

Special Education

Tutoring Services

State of Georgia

Enrollment

Perkins IV

1S1 Acad Read | 1S2 Acad Math | 3S1 Diploma | 4S1 Graduat | 5S1 Placemnt | 6S1 NonTrad PI | 6S2 NonTrad Co

2008-2009 CTAE : Career, Technical and Agriculture Education

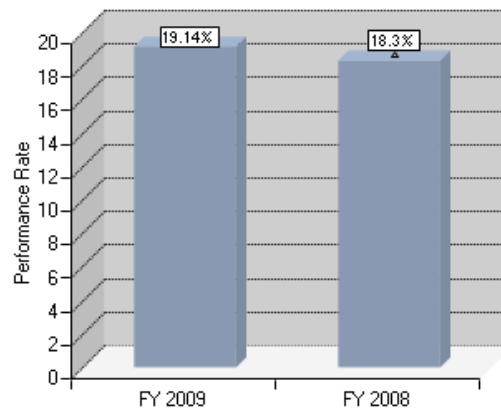
Performance Rate - All CTAE Concentrators

Performance Rate: All CTAE Concentrators

6S1 - Non Traditional Participation

State of Georgia	FY 2009	FY 2008
Number of CTAE participants from underrepresented gender	165602	114032
Number of CTAE participants who are employed in non traditional fields	31690	20865
Percentage of Nontraditional Participation	19.14%	18.3%

* GaDOE does not Report on fewer than 10 students.



This page shows state data for Perkins IV for reporting years 08 and 09 for core indicator 6S1

2008 - 2009

Georgia Profile

CTAE

NCLB / AYP

Report Card

Title I Annual Reports

Special Education

Tutoring Services

State of Georgia

Enrollment

Perkins IV

1S1 Acad Read | 1S2 Acad Math | 3S1 Diploma | 4S1 Graduat | 5S1 Placemnt | 6S1 NonTrad Pl | 6S2 NonTrad Co

2008-2009 CTAE : Career, Technical and Agriculture Education

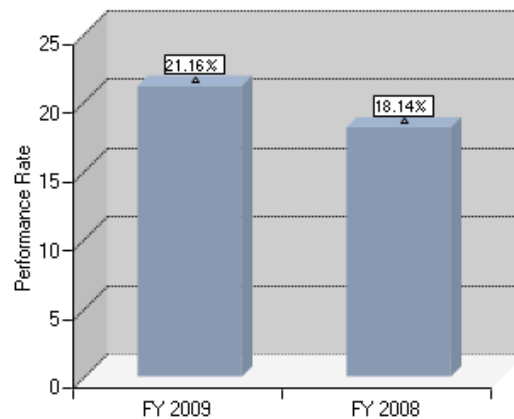
Performance Rate - All CTAE Concentrators

Performance Rate: All CTAE Concentrators

6S2 - Nontraditional Completion

State of Georgia	FY 2009	FY 2008
Number of CTAE concentrators who completed a programs that leads to Employment in nontraditional fields	15332	13475
Number of CTAE concentrators from under-represented gender groups who completed a program that leads to employment in nontraditional fields.	3244	2440
Percentage of Nontraditional Completion	21.16%	18.14%

* GaDOE does not Report on fewer than 10 students.



This page represents core indicator 6S2 (completion) for reporting year 08 and 09 for the STATE performance levels

2008 - 2009

District Profile

CTAE

NCLB / AYP

Report Card

Title I Annual Reports

Special Education

Tutoring Services

Jones County in Georgia

Enrollment

Perkins IV

1S1 Acad Read | 1S2 Acad Math | 3S1 Diploma | 4S1 Graduat | 5S1 Placemnt | **6S1 NonTrad PI** | 6S2 NonTrad Co

2008-2009 CTAE : Career, Technical and Agriculture Education

Performance Rate - By Gender

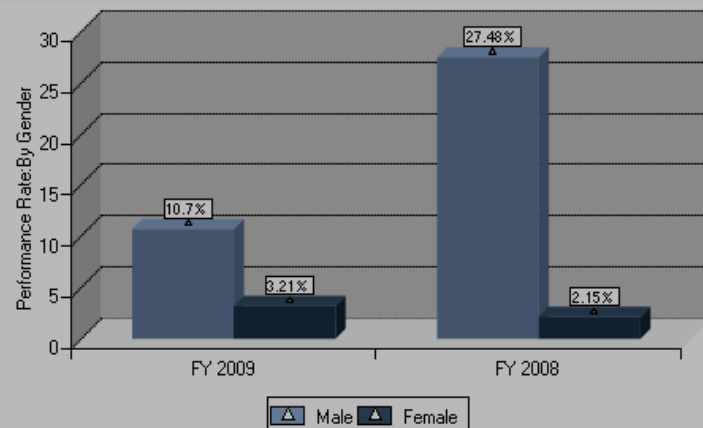
Performance Rate: All CTAE Concentrators By Gender

6S1 - Non Traditional Participation

Jones County	FY 2009		FY 2008	
	Male	Female	Male	Female
Number of CTAE participants from underrepresented gender	187	156	131	186
Number of CTAE participants who are employed in non traditional fields	20	5	36	4
Percentage of Nontraditional Participation	10.7%	3.21%	27.48%	2.15%

Percentage of Nontraditional Participation

10.7% 3.21% 27.48% 2.15%



This page represents gender participation by SCHOOL DISTRICT for reporting years 08-09



School Profile

CTAE

NCLB / AYP

Report Card

Title I Annual Reports

Enrollment

Perkins IV

1S1 Acad Read | 1S2 Acad Math | 3S1 Diploma | 4S1 Graduat | 5S1 Placemnt | 6S1 NonTrad PI | 6S2 NonTrad Co

2008-2009 CTAE : Career, Technical and Agriculture Education

Performance Rate - By Gender

Performance Rate: All CTAE Concentrators By Gender

6S1 - Non Traditional Participation

Albany High School

FY 2009

FY 2008

	Male	Female	Male	Female
Number of CTAE participants from underrepresented gender	57	79	37	62
Number of CTAE participants who are employed in non traditional fields	22	0	16	2
Percentage of Nontraditional Participation	38.6%	0%	43.24%	3.23%

* GaDOE does not Report on fewer than 10 students.



This page represents participation by a HIGH SCHOOL for reporting years 08-09



2009 - 2010

State of Georgia

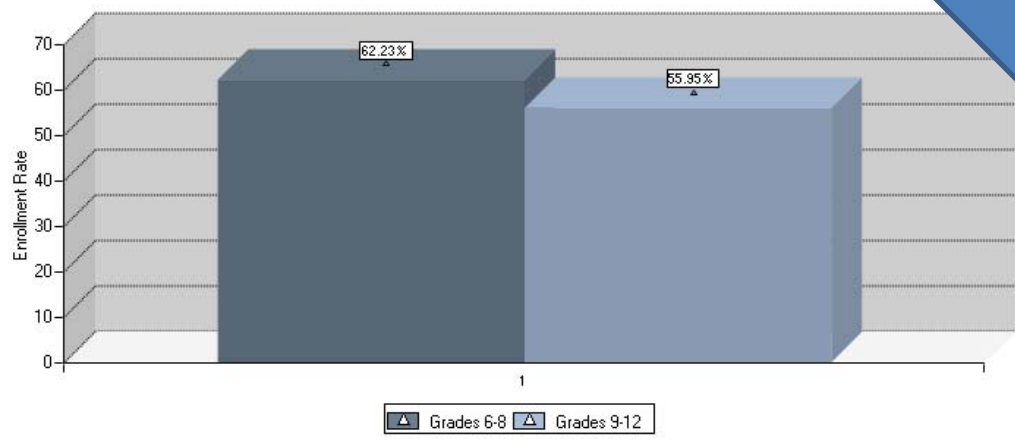
Search

- Georgia Profile
- CTAE
- NCLB / AYP
- Report Card
- Title I Annual Reports
- Special Education
- Tutoring Services

Enrollment Perkins IV

2009-2010 CTAE : Career, Technical and Agriculture Education

CTAE Enrollment		
FY 2010	State of Georgia	
	Grades	
	6th - 8th	9th - 12th
Number of Unduplicated Students Enrolled in all Courses	413688	519700
Number of Unduplicated Students Enrolled in CTAE Courses	231438	323412
CTAE Enrollment Rate	55.95%	62.23%



This page represents CTAE data for the year indicated in the top left-hand corner



Georgia Profile

CTAE

NCLB / AYP

Report Card

Title I Annual Reports

Special Education

Tutoring Services

Enrollment

Perkins IV

1S1 Acad Read | 1S2 Acad Math | 3S1 Diploma | 4S1 Graduat | 5S1 Placemnt | 6S1 NonTrad PI | 6S2 NonTrad Co

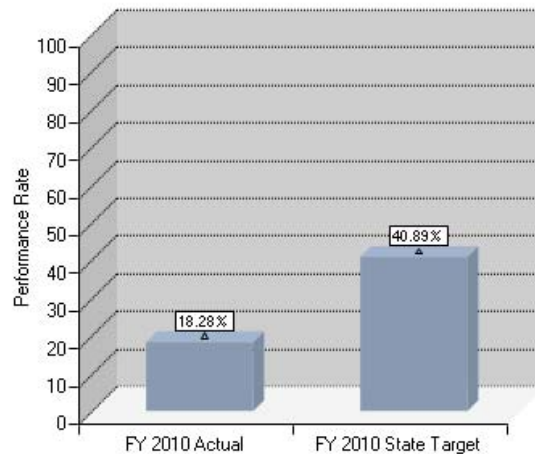
2009-2010 CTAE : Career, Technical and Agriculture Education

Performance Rate - Actual vs Target

Performance Rate: Actual vs Target

Actual v/s Target

State of Georgia	FY 2010 Actual	FY 2010 State Target
Actual vs Target for Secondary Nontraditional Participation	18.28%	40.89%



This page represents Perkins state data for 6S1 by actual performance and state defined target performance level (40.89%)



School Profile

CTAE

NCLB / AYP

Report Card

Title I Annual Reports

Enrollment

Perkins IV

1S1 Acad Read | 1S2 Acad Math | 3S1 Diploma | 4S1 Graduat | 5S1 Placemnt | 6S1 NonTrad PI | 6S2 NonTrad Co

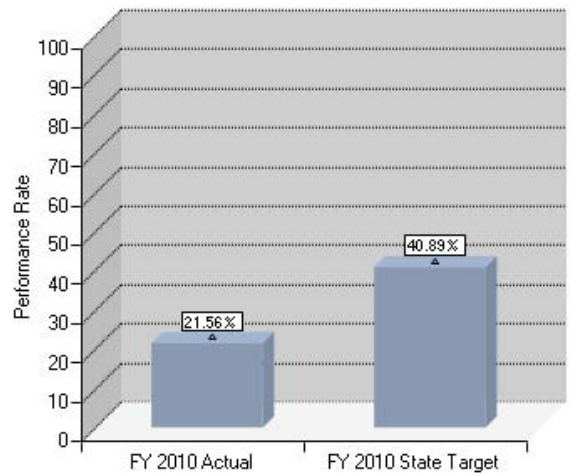
2009-2010 CTAE : Career, Technical and Agriculture Education

Performance Rate - Actual vs Target

Performance Rate: Actual vs Target

Actual v/s Target

Albany High School	FY 2010 Actual	FY 2010 State Target
Actual vs Target for Secondary Nontraditional Participation	21.56%	40.89%



This page represents a high school actual performance level (21.56%) for 6S1 compared to the state target performance level (40.89%)



State, District, School, Pathways Performance Levels

Date	State		District		School		Pathway
	Indicator	6S1	6S2	6S1	6S2	6S1	
08/09 7/1/08-6/31/09	L=16% A=24.63	L=86.50% A=22.81%					
09/10 7/1/09-6/31/10	L=40.89% A=18.28%	L=45.61% A=19.38%					
10/11 7/1/10-6/31/11	L=41.89% A=17.42%	L=21.25% A=17.68%					
11/12 7/1/11-6/31/12	L=18.70%	L=21.70%					
12/13 7/1/12-6/31/13	L=19.20%	L=22.20%					

To figure the pathway performance level: Divided the number of underrepresented group (males/females) by the total number students enrolled in each pathway offered:

EXAMPLE: Participation (6S1)

Course/Construction Pathway (4 classes)

Females-4

Males-88

Total Enrollment-92 (duplicate counts)

$4 \div 92 = .04\%$ school/system performance level for females

$88 \div 92 = 96\%$ school/system performance level for males

