

Reimbursement Matters: Georgia High-Cost Fund Grant and Residential & Reintegration Services Grant

Department of Special Education Services and Supports Budget Unit

Amber McCollum, Program Manager

Nicole Croom, Program Specialist

Scott Dorsey, Program Specialist

Malissa Roberts, Program Specialist

Our Team



Senior Program Manager
Amber McCollum



Program Specialist
Nicole Croom



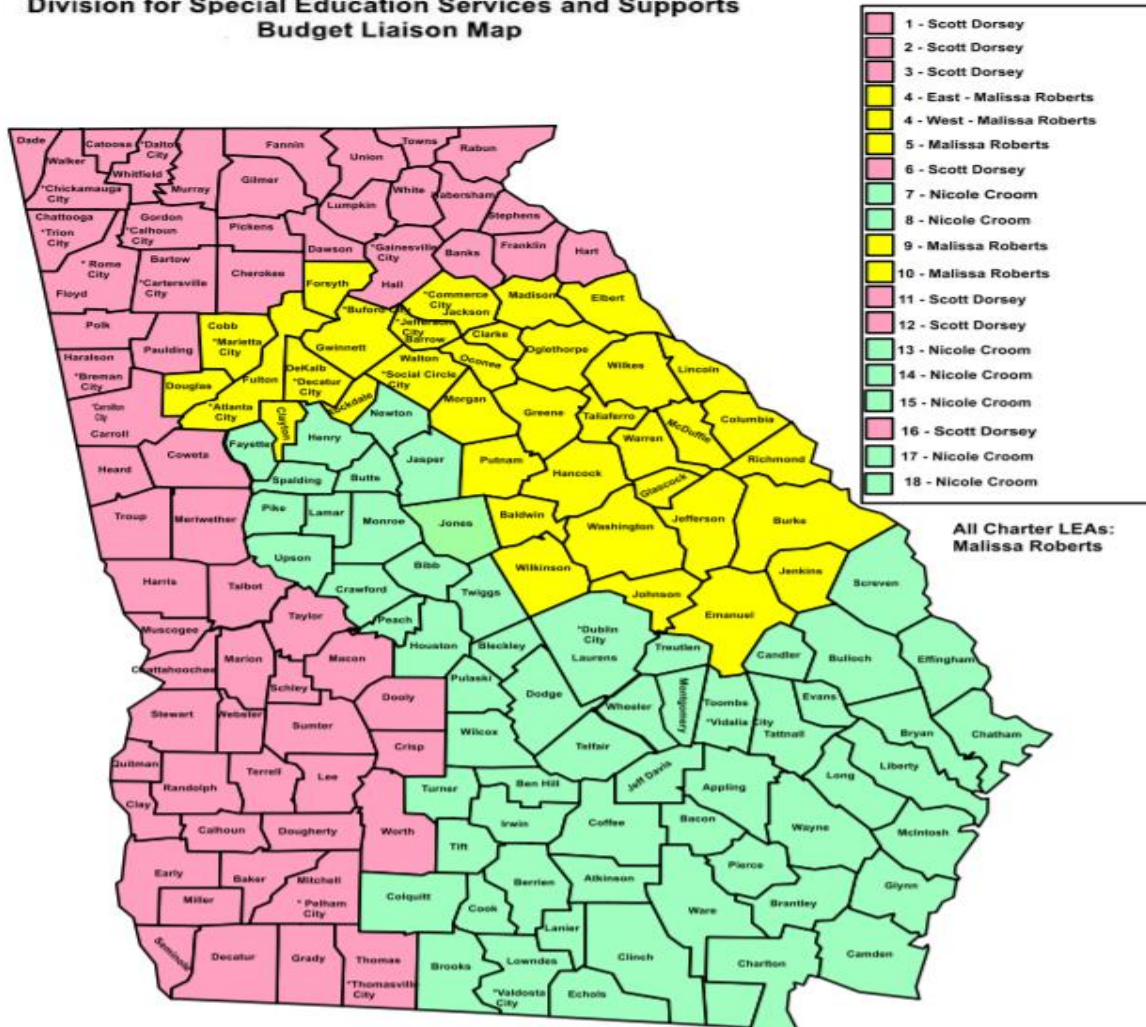
Program Specialist
Scott Dorsey



Program Specialist
Malissa Roberts

Who We Serve

Division for Special Education Services and Supports
Budget Liaison Map



Learning Target

- Become familiar with reimbursement grants available to all LEAs with exceptionally costly special education students

Grant Benefits

- Source of revenue
 - Residential and Reintegration Grant – state funds
 - High-Cost Fund Grant – federal funds
- Offsets expenditures
- Helps to maintain quality programs for all students





Grant for Residential and Reintegration Services (GRRS)

Purpose of Grant for Residential and Reintegration Services (GRRS)

Funds assist LEAs with partial funding for a high-cost placement of a student with disabilities to a private residential program or reintegration back from a residential program.



Priorities for Funding State Rule 160-4-7-.18

Children with profound and severe disabilities requiring residential services who are wards of the State.

Children with profound and severe disabilities requiring reintegration from a residential program.

Children with profound disabilities who need residential services.

Children with severe disabilities who need residential services.

Grant for Residential and Reintegration Services Application Requirements

A private residential school must:

- Comply with the student's IEP and Georgia Rules governing special education
- Be on the approved state list

An LEA must first consider an in-state private residential school before an out of state school

A private out of state school must meet the requirements of the state in which it is located

Grant for Residential and Reintegration Services Application Requirements

- A full continuum of services has been considered before a residential placement is considered.
- Only direct special education costs, related services, and room and board for the current fiscal year (July 1 through June 30).
- Minimum amount is **\$30,000**.
- Documentation submitted with the application.

Grant for Residential and Reintegration Services Application Requirements

- Grant for Residential and Reintegration Services Submission Window: (January 1 – February 15)
- **GRRS grants have no carryover period.**
- GaDOE Application Submission Method:
 - ***Scan & Email to Budget Liaison:***
Use GaDOE Portal Email to submit application.

Grant for Residential and Reintegration Services Application

Available on Special Ed Budget website

Application Window
January 1 – February 15

Superintendent must sign application

GRANT FOR RESIDENTIAL AND REINTEGRATION SERVICES Georgia Department of Education Division for Special Education Services and Supports	
SYSTEM: School Year: 201 - 201	
System Contact:	Phone:
	Email:
<input type="checkbox"/> Initial	<input type="checkbox"/> Parent Custody
<input type="checkbox"/> Continuation	<input type="checkbox"/> Ward of the State
Student's Name:	Date of Birth:
The Student's Primary Disability:	
Father's/Guardian's/Surrogate's Full Name:	Mother's/Guardian's/Surrogate's Full Name:
Home Address:	
(Street)	(City/State) (Zip) (Phone)
Private Residential School Name:	Phone:
For an out of state school: Submit documentation that school is on the approved list for the state in which it resides.	
Address:	
Contact Person:	
Provide the specific cost breakdown for services provided by the private residential school. Total cost of over \$30,000 should be used as the minimum to be considered in the application. Invoices required.	
Special Education Services	\$ _____ day/month
Related Services	\$ _____ day/month
Room and Board	\$ _____ day/month
TOTAL COST OF RESIDENTIAL PLACEMENT	\$ _____ day/month
\$ _____/Month X ___ Months OR \$ _____/Day X ___ Days	\$ _____
Need actual months or days served for educational program only	

Grant for Residential and Reintegration Services Resources



Application instructions, checklist, and professional development modules are located on the Special Education website.

Training annually with New Directors and/or Special Education Director's Webinars in addition to the online training modules.

Grant for Residential and Reintegration Services Resources

Resources available on
GaDOE website at:

Special Education Services and Supports → *Budgets, Grants and Consolidated Application* → *State Grant for Residential and Reintegration Services* located [here](#)

Resources for Guidance

- Financial Management Complaints
- Equitable Services for Private and Home School Students Webinar
- FY22 IDEA Fiscal Monitoring Checklist for GNETS
- FY22 IDEA Fiscal Monitoring Checklist for LEAs
- Federal Programs Monitoring
- FY22 IDEA Equitable Services Technical Assistance Webinar
 - FY22 IDEA Equitable Services Technical Assistance PowerPoint
 - IDEA Equitable Services Frequently Asked Questions
 - IDEA Equitable Services Office Hours with Data and Budget Units
- LUA Chart of Accounts

Federal Grant for High Cost Fund

- Georgia's Plan for High Cost
- Grant for High Cost Funds - Sample Application
- Grant for High Cost Funds Q&A
- Georgia's High Cost Grant Submission Training Webinar
- Georgia's High Cost Grant Online Submission Manual
- High Cost Grant Module
- FY21 High Cost and Residential Reintegration Grants Webinar PowerPoint

State Grant for Residential and Reintegration Services

- Grant for Residential and Reintegration Services Application
- Grant for Residential and Reintegration Services Instructions
- Residential Reintegration Grant Module

Grant for Residential and Reimbursement Services Example

Student Profile: Autism Disorder, Anxiety Disorder, Major Medical Disabilities

Prior Services: Self-contained class in the public school before referral to private schools. Seven different private schools to include at home therapy, nursing, behavior therapy, and hospitalization BEFORE current residential facility placement. Lots of equipment needs for communication and daily living skills.

Special Education Daily Services - \$140,040

Related Therapies - \$10,392

Room and Board - \$174,480

Total annual cost for this student - \$324,912

Partial Funding- State Rule 160-4-7-.18



(i) Educational costs for students meeting the Residential and Reintegration Services Grant Program criteria shall be shared between the LSS and the department. The LSS shall assume a percentage of the total education cost equal to the percent of local funds utilized for the total educational program in the respective school district . The department shall maintain a record of the percent requirement for LSS and state participation in this program . It is the LSS 's responsibility to initiate and submit an application for these funds. The LSS may use other funds from public or private agencies to assist in the cost of educating a student in a private school or private facility, provided the services are arranged by the LSS.

Applications Review – February is Busy!

- We typically receive anywhere from seven to twenty Residential and Reintegration grants a year.
- We know there are more than what is submitted!
- We review very quickly in the first week of February, and "typically" take it to the February board meeting for very quick turnaround.





Georgia High-Cost Fund Grant (GHCF)



Purpose of Georgia High-Cost Fund Grant

Funds assist local educational agencies (LEAs) in covering the **high cost** of providing special education services to children with disabilities who meet certain criteria. 34 C.F.R. § 611 (e)(3) of the IDEA 2004



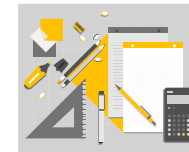
Purpose of Georgia High-Cost Fund Grant (cont.)

“High Needs Child” – a student with disabilities whose special education and related services **exceed** the typical needs of a child with a disability



Georgia High-Cost Fund Grant Requirements

- Georgia High-Cost Fund Grant Application Submission Window: (January 1 – February 15)
- Each LEA may request reimbursement for two of every 1,000 students with disabilities.
- Maximum number of High-Cost Fund Grant Applications a qualifying district can submit is fifteen (15).
- Only direct special education costs & related services for current fiscal year (July 1 through June 30).
- Minimum amount is \$27,000.
- **GHCF grants have no carryover period.**
- GaDOE Application Submission Method:
 - Georgia High-Cost Fund Grant Submissions are submitted Electronically via www.gahcf.org



Georgia High-Cost Fund Grant

Allowable Costs for Reimbursement

All costs must be specific to the high-cost student and documented on the student's IEP.

Special Education Services Expenditures

- Teacher
- Paraprofessional
- Speech
- ESY Teacher Costs
- ESY Paraprofessional Costs

Related Services Expenditures

- Counselor – Direct Services
- Psychologist – Direct Services
- OT and PT
- Social Worker
- Nursing
- Bus Driver
- Bus Monitor
- AT Device – specific to student

Document,
Document,
Document!



STUDENT'S NAME: _____ SYSTEM: _____

HIGH COST FUND GRANT APPLICATION CHECKLIST

REVIEWER:		DATE:
✓ YES X NO	ITEM	COMMENTS
	Are the grant expenditures within the current school year only – July 1 through June 30th? (Page 1)	
	Does the total cost exceed \$27,000 and meet the "High Need Child" definition of exceeding the typical needs of a SWD?	
	Is the student a ward of the state? (Relevant documentation required if yes)	
	Do the services on the IEP match the expenditures outlined on the application? (Page 2)	
	Is there a description of prior program services (Initial Grant)	
	Do the present levels of academic achievement and functional performance adequately describe the severity of the child's deficits that would lead to the development of services for this high needs child?	
	Are the transportation costs limited to personnel, equipment or services for this high needs child based on the IEP?	
	Are costs prorated for the number of students in the classroom, for related services and/or for transportation based on the IEP?	
	Are costs documented for maintaining placement of the child within the community?	
	Are the unique features of this high needs child to include developmental, cognitive, social/emotional and medical factors appropriately documented? (Page 3)	
	Are the direct instructional services appropriately based on the IEP for this high needs child? (Page 4)	
	Copy of the IEP is provided and completed? Beginning Date: _____ Ending Date: _____	
	Does the timeline to monitor progress of the child include dates and data collection?	
	Section --"Reduction in services" (Page 5) complete and consistent with information provided throughout the application?	
	Specialized training for staff, parents or caregivers?	

FUND SOURCE: Initial Grant

Total Amount Requested:	Total Amount Approved:	Comments regarding any reduction:

Application Checklist

Georgia High-Cost Fund Grant Application

GEM Software

<https://www.gahcf.org>

Application Window
January 1 – February 15th

Special Education
Director **must** sign off



Georgia Department of Education

Richard Woods, Georgia's School Superintendent
"Educating Georgia's Future"

GRANT FOR HIGH COST FUND
Georgia Department of Education
Division for Special Education Services and Supports

A new login and password are required to complete and submit applications using this web site each year.

[CLICK HERE TO CREATE A NEW ACCOUNT**](#)**

To access your account enter login and password below:

Login:

Password:

Login

The Login and Password ARE CASE SENSITIVE.

[GAHCF Technical Manual](#)

[GAHCF Technical Training Webinar](#)

For technical support call the GEM HELP DESK at 207.985.8802 or email support@gemsoftwaredevelopment.com
(Please include the name of your school district in email.)

Profile of a High Needs Student

- Hearing Impaired
- Visually Impaired
- Other Health Impaired
Students with nursing services
- Student with severe emotional,
behavior disorder
- Student with Multiple
Disabilities

Meet Cody



- Intellectual Disability / Traumatic Brain Injury
- Profound hearing loss
- Several surgeries which involved attaching a halo to his skull with anchoring rods and wire to the jaw and eye socket to gradually shift his skull forward
- Suffered severe infections and complications which caused brain damage
- No longer can walk independently but can stabilize
- Multiple medical needs
 - monitoring for seizures
 - oxygen
 - Central line in chest for IV antibiotics
 - G-tube for nutrition

Profile of a High Needs Student

Cody's Costs

Ellis Center	\$ 105,000.00
Speech, OT, PT, Nursing	\$ 55,165.30
Transportation Cost	\$ 10,000.00
Total	\$170,165.30

Georgia High-Cost Fund Grant Resources

Resources available on GaDOE website at:

Special Education Services and → Supports Budgets, Grants and Consolidated → Application Federal Grant for Georgia High-Cost Fund located [here](#) →

Resources for Guidance

- Financial Management Complaints
- Equitable Services for Private and Home School Students Webinar
- FY22 IDEA Fiscal Monitoring Checklist for GNETS
- FY22 IDEA Fiscal Monitoring Checklist for LEAs
- Federal Programs Monitoring
- FY22 IDEA Equitable Services Technical Assistance Webinar
 - FY22 IDEA Equitable Services Technical Assistance PowerPoint
 - IDEA Equitable Services Frequently Asked Questions
 - IDEA Equitable Services Office Hours with Data and Budget Units
- LUA Chart of Accounts

Federal Grant for High Cost Fund

- Georgia's Plan for High Cost
- Grant for High Cost Funds - Sample Application
- Grant for High Cost Funds Q&A
- Georgia's High Cost Grant Submission Training Webinar
- Georgia's High Cost Grant Online Submission Manual
- High Cost Grant Module
- FY21 High Cost and Residential Reintegration Grants Webinar PowerPoint

State Grant for Residential and Reintegration Services

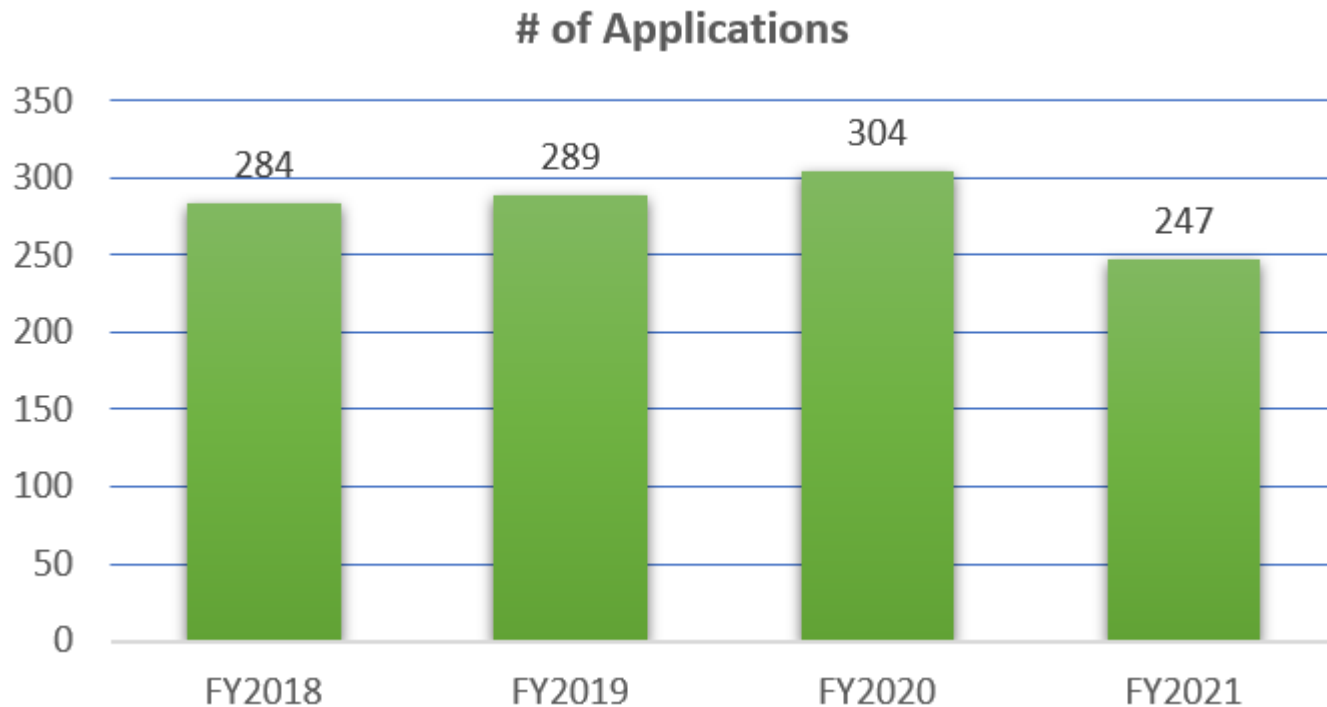
- Grant for Residential and Reintegration Services Application
- Grant for Residential and Reintegration Services Instructions
- Residential Reintegration Grant Module

Applications Review – February is Busy!

- We typically receive anywhere from 280 to 300+ Georgia High-Cost Fund Grants a year
- We know there are more than what is submitted!
- We review very quickly in the first week of February, and "typically" take it to the February board meeting for very quick turnaround.



Georgia High-Cost Fund Grant Review



Georgia High-Cost Fund Grant



Contact Us



Amber McCollum
Program Manager
470.218.0381
amccollum@doe.k12.ga.us

Nicole Croom
Program Specialist
678.850.1171
ncroom@doe.k12.ga.us

Scott Dorsey
Program Specialist
470.423.6989
sdorsey@doe.k12.ga.us

Malissa Roberts
Program Specialist
470.316.8661
mroberts@doe.k12.ga.us

www.gadoe.org

   @georgiadeptofed

 youtube.com/georgiadeptofed



**EDUCATING
GEORGIA'S FUTURE**

