

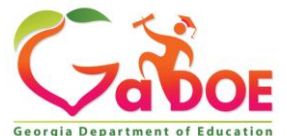
Conversations Around Collaboration: You Complete Me

Presented by:

K. Elise James

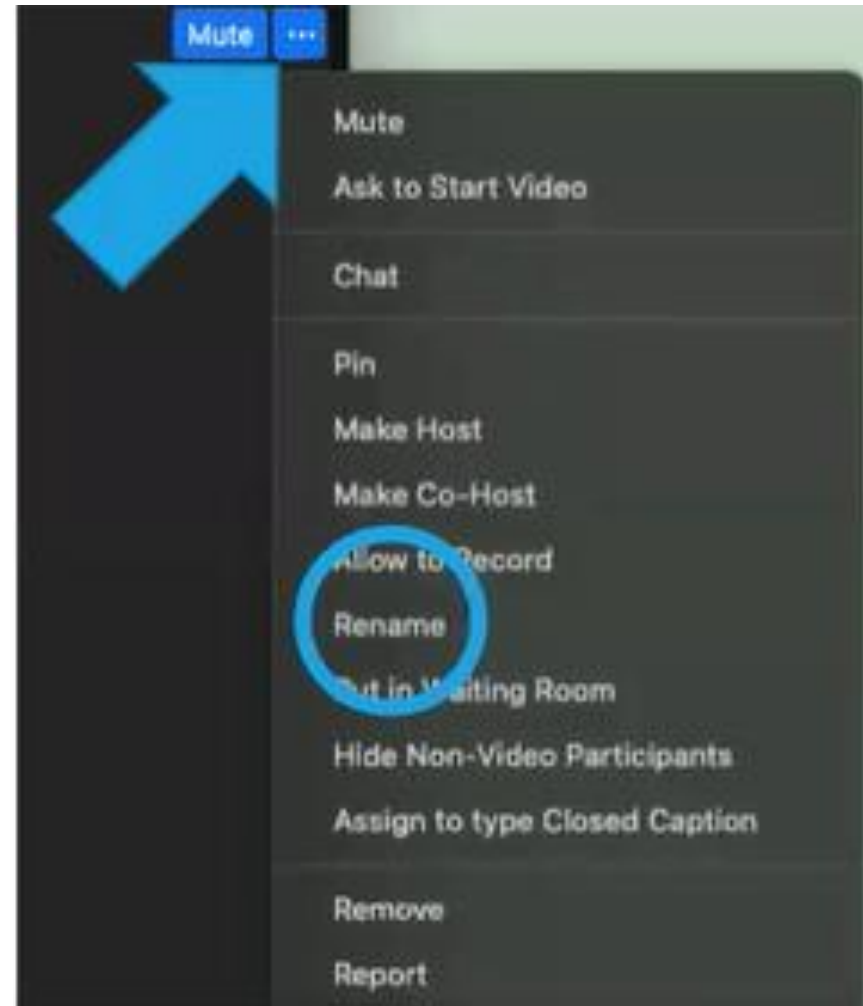
Sheila McKeehan

Nicohl Shelton Webb



Change Your Zoom Name

- Click on the three dots in the right corner of your video and click “Rename”.
- Please change your Zoom name to:
 - “(First Name)_(District)”
 - Example:
(Elise_Atlanta)
 - **Please don’t abbreviate the district**



Introductions



K. Elise James
Program Specialist
Transition Postschool Outcomes
Division for Special Education Services and Supports
Ejames@doe.k12.ga.us



Sheila McKeehan
Program Manager
School Counseling and Career Readiness
Career, Technical, and Agriculture Education
Sheila.mckeehan@doe.k12.ga.us



Nichol Shelton Webb
Program Specialist
School Counseling and Career Readiness
Career, Technical, and Agriculture Education
Nichol.webb@doe.k12.ga.us

Outline for the Session:

At the end of this session, participants will be able to:

- Identify successes and pinpoint a gap in collaboration to work towards improving.
- Identify progress on the levels of collaboration.
- Describe next steps of continuing the collaboration conversations when planning post-secondary needs for students.

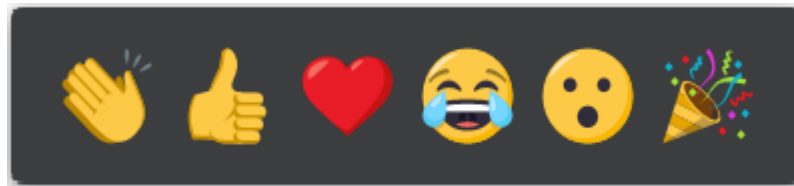
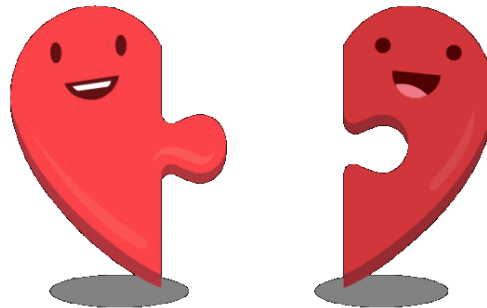
How will you get the most out of this presentation?

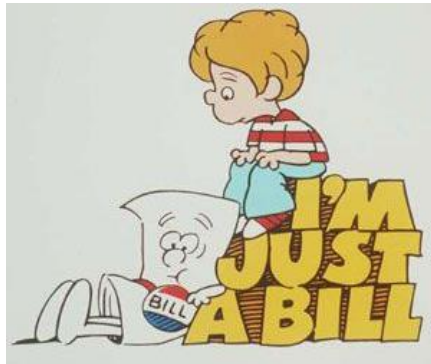


You complete me



BE CURIOUS!
Ask questions!





Let's look back...

- Building a team
- Rules and regulations
- Future focused

Wooclap Poll



How to participate?

- 1 Connect to www.wooclap.com/transitionsca
- 2 Answer questions to participate



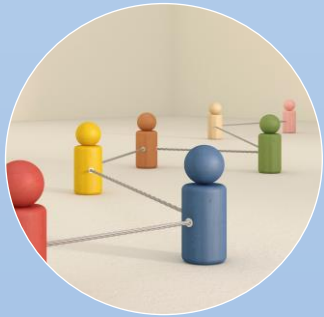
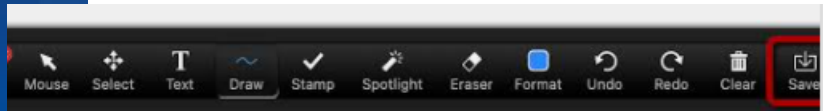
Sharing session



| Success | Gaps | Next Steps |
|---|--|---|
| Share a success your district has with collaboration. | What is one gap your district has that you would like to work towards improving? | What steps will you take to make that happen. |

Collaboration Journey...Where is Your Team?

Use Annotate Buttons on Zoom to Answer



Networking

- Aware of organization
- Loosely defined roles
- Little communication
- All decisions made independently



Cooperation

- Provide information to each other
- Somewhat defined roles
- Formal communication
- All decisions made independently



Coordination

- Share information and resources
- Defined roles
- Frequent communication
- Some shared decision making



Coalition

- Share ideas
- Share resources
- Frequent and prioritized communication
- All members have a vote in decision making



Collaboration

- Members belong to one system
- Frequent communication is characterized by mutual trust
- Consensus is reached on all decisions

Relationship Characteristics

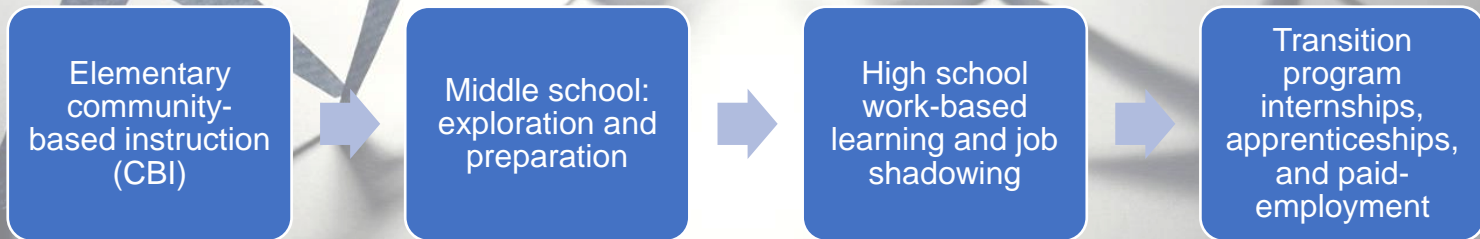
Next Steps



- Evaluate your collaborative efforts
- Scale up the collaborative team
 - High School: Add counselors, CTAE/CTI, agencies (others?)
 - Add middle school: Add counselors and all special education teachers (others?)
 - Add elementary: Add counselors and all special education teachers (others?)
- Set up a consistent meeting schedule for program planning

Be Creative

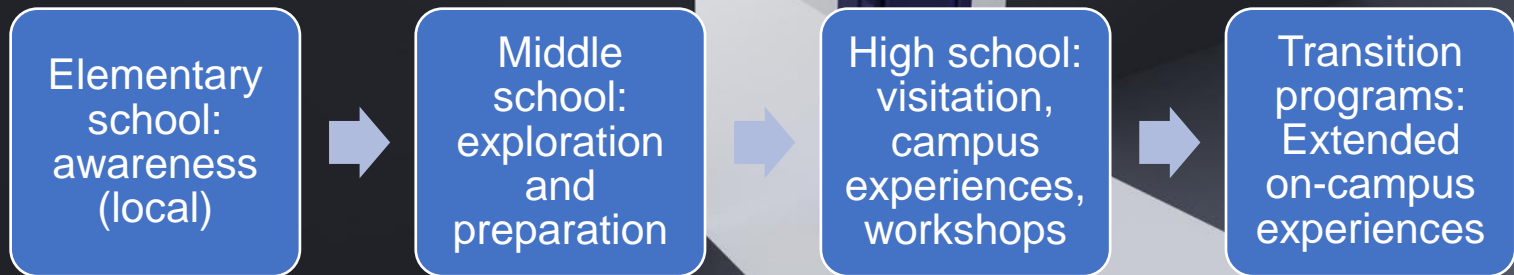
- **Create a programming continuum that includes elementary, middle, and high school collaboration**



- **Create a programming continuum focused on postsecondary education and trade**

Focus on the Future

- Create a programming continuum focused on postsecondary education and technical school





Anne Ladd
Family Engagement Specialist
Parent Mentor Partnership
aladd@doe.k12.ga.us



Jennifer Phinney
Program Specialist
Dual Enrollment
Jennifer.Phinney@doe.k12.ga.us

Special Thanks!



Laurie Ponsell
Program Specialist
Transition Compliance
lponsell@doe.k12.ga.us



Cherie Miller
Program Specialist
Special Populations
Cheri.miller@doe.k12.ga.us

Resources

Pathway Description/Resources

[Programs of study](#)

[Articulation](#)

[Georgia Career Pathways](#)

Dual Enrollment

U.S. Department of Education issued a guidance letter,

[*“Increasing Postsecondary Opportunities and Success for Students and Youth with Disabilities”*](#).

[Dual Enrollment_final.pdf \(gadoe.org\)](#)

[CTAE Dual Enrollment Guidance on Transition website](#)

[B.R.I.D.G.E. Law Guiding Document](#)

Resources

Pre-ETS

[What are the Required Pre-Employment Transition Services?](#)
[National Technical Assistance Center on Transition: The Collaborative \(NTACT:C\) Pre-ETS Resource Mapping Tool](#)

Self-Determination:

[Georgia Department of Education Transition: Self-Determination Transition Collaborative](#)
[Self Determination - National Parent Center on Transition and Employment \(pacer.org\)](#)
[The Zarrow Center for Transition and Self-Determination](#)

[Bleckley County Elementary School Coffee Cart \(7 mins\)](#)

APPLING COUNTY
ATLANTA PUBLIC SCHOOLS
BANKS COUNTY
BEN HILL COUNTY
BIBB COUNTY
BUFORD COUNTY
BULLOCH COUNTY
BUTTS COUNTY
CALHOUN CITY
CATOOSA COUNTY
CHATHAM COUNTY
CHEROKEE COUNTY
CLAYTON COUNTY
COBB COUNTY
COLQUITT COUNTY
CRISP COUNTY
DEKALB COUNTY
DEPARTMENT OF JUVENILE JUSTICE
DOUGHERTY COUNTY
DOUGLAS COUNTY
DUBLIN CITY

JACKSON COUNTY
JASPER COUNTY
JONES COUNTY
LAURENS COUNTY
LEE COUNTY
LUMPKIN COUNTY
MARIETTA CITY
MERIWETHER COUNTY
MILLER COUNTY
MURRAY COUNTY
MUSCOGEE COUNTY
NEWTON COUNTY
PAULDING COUNTY
PEACH COUNTY
POLK COUNTY
PUTNAM COUNTY
RABUN COUNTY
RICHMOND COUNTY
ROCKDALE COUNTY

EMANUEL COUNTY
FAYETTE COUNTY
FOOTHILLS EDUCATION CHARTER HIGH
SCHOOL
FORSYTH COUNTY
GAINESVILLE CITY

Party Time!

ROME CITY
SEMINOLE COUNTY
SOCIAL CIRCLE
SPALDING COUNTY
STEPHENS COUNTY
TAYLOR COUNTY

