

What does it mean to support the whole child?

Ashley Harris, Dir. Whole Child Supports and Strategic Partnerships
September 28, 2022

Overview

- Introduction
- Discussion about whole child
- GaDOE Office of Whole Child Supports
- Tools, Tips and Resources
- Exercise!

Introduction

Who am I?????

Physical Health



Mental Development
AND Health

Family
Contributions

Academics

Environmental Factors

Whole Child.....

Context/History – ASCD & CDC Framework

5 Key Tenets of Whole Child Support

1. Healthy
2. Safe
3. Engaged
4. Supported
5. Challenged



What do we do?

- We assist districts, schools, and communities with identifying and addressing student non-academic barriers to success.



Program Areas

- **Wraparound Supports**
 - RESA, OWCS, SDE partnership
- **Whole Child Model School Certification**
- **Integrated Wellness**
 - *School-Based Health Centers*
 - *School Nurse Program*
 - Health Barriers to Learning and Development
 - Staff Wellness
 - Wellness policy support
 - *Medicaid Program Reimbursement*
- **Georgia's Tiered Systems of Supports for Students (MTSS)**
- **Mental Health and Well-being**
 - Mental Health Awareness Training/Professional Development
 - *School Social Work Program*
 - DBHDD Behavioral Health Liaison
- **School Safety**
 - School Resource Officers Academy
 - GA School Safety Resource Center
 - GEMA-HS Collaborative Partner
 - Georgia Student Health Survey, Parent and Staff Surveys

Key Resources

- **Our people!**
- [Whole Child Toolkit](#) – scan QR code
- [Health Barriers to Learning Toolkit](#)
- [Georgia’s Center for School Safety](#)
- Mental Health Awareness Training (coming soon)
- [Suicide prevention resources](#)
- [GaDOE Community](#) > *Office of Whole Child Supports* > 8 subgroups
 - [Professional Learning Opportunities](#)
- School nursing and social work listservs





Partnership Facilitation

- Support schools with finding the right partners to meet their needs
- Technical assistance with health and safety initiatives



How do I get started?



Process

1. Identify challenges.
2. Prioritize challenges.
3. Research *potential* partners.
4. MEET with purpose!
5. Develop a plan of action.
6. Implement the plan of action.
7. Evaluate the implementation and revise.

Identify Challenges

- Not about blaming and certainly not viewed as a deficit..
 - Bright spots
- Identifying what is preventing **YOUR** babies from doing well.
- Rome wasn't built in a day, and the challenges won't be remedied in a day either!
- DEEP root cause analysis
 - 5 Whys, Fishbone

Activity

Think about the children in your school/district/community.....



Activity

- What gives you heartburn?
- WHY does it give you heartburn?

Prioritize Challenges



- Ask yourself...
 - What problem(s) am I trying to solve?
 - What does the data say vs my thoughts/feelings?
 - What have students, families and school staff identified as challenges?
 - Does 1 challenge need to be addressed before another can start?
 - What can be done that will have the largest impact?
- Do Less and Obsess!

Activity

Using the same list, rank order the priorities 1-...

Non-Academic Data Sources

- Georgia KIDS COUNT
 - Georgia Family Connection Partnership
 - Data – KIDS COUNT
- Get Georgia Reading Campaign
 - Data – Find data
 - Georgia Statewide Data Explorer
 - PolicyMap Mapping & Reporting Tool
- Georgia Insights
 - Information Hub
- Georgia Department of Public Health
 - OASIS
 - Vital statistics, hospital discharge, ER visits, population data, etc.
 - Tables, maps, and charts of health indicators sortable by population demographics
- County Health Rankings and Roadmaps
 - Explore health rankings
 - Health Outcomes- how healthy counties are
 - Health Factors- what influences the health of a county
- Certified Personnel In (CPI)
 - Do you have the staff in place to support your students?

Research *Potential* Partners

- Who ALREADY works on this challenge?
- Whom else may have the same challenges?
- Who (population) are the most affected by the challenge? Any special interest groups?
- Whom else might care?
- Do you have current partners who address this challenge but aren't maximized?

Activity

- Pick one of your challenges and take a few moments to jot down any partners you can think of to assist with your challenge(s)?



MEET with Purpose

- Collective Impact, Population Health Model
 - Common Agenda
 - Shared Measurement Systems
 - Mutually Reinforcing Activities
 - Continuous Communication
 - Backbone Support Organizations (for each identified challenge)

Tips on Partnering

- Learn about their priorities
 - LISTEN to find your “in-point”
- Resources aren’t ONLY funding
 - Staff, reorganization of how things are done, linkages with their network

Ask “how might WE work to address this problem?”, and
GENUINELY be open!

[clip](#)

Develop a plan of action

- What are important factors that should be a part of your plan of action??

Parts of the Plan of Action

1. Your challenge statement.
 - Underlying factors that contribute to your challenge.
2. Summarize method to address challenge.
3. Current status.
4. Desired status.
5. Responsible party.
 - MOCHA Project Planning
6. Deadline(s).

Implement the Plan of Action

- Ask yourself these questions:
 - How might we inform students, families and teachers about X?
 - How can students, families and teachers access X?
 - Consider entry points and referral process.
 - How will we collect data to continuously improve?
 - How much TIME will X need to be in place, PRIOR to moving to the next thing?

Evaluation and Revision

- Start. Stop. Continue.
- “If at 1st you don’t succeed...dust yourself off and try again.”
- Policy vs. Practice
- Have the efforts met the expectation (desired outcome)?

Now it's your turn!!!

- Get into teams of 3-4 (each person gets 3 mins to share and 2 minutes for feedback)
 1. Introduce yourselves (name, title, district/organization)
 2. Discuss your skeletal plans of action
 - Borrow ideas as you listen. 😊
 3. Listen for feedback

Diagnosis

Process

1. Identify challenges.
2. Prioritize challenges.
3. Research *potential* partners.
4. MEET with purpose!
5. Develop a plan of action.
6. Implement the plan of action.
7. Evaluate the implementation and revise.

Whole Child Toolkit



Welcome to the Georgia Department of Education's Whole Child Toolkit! Educating the whole child means to acknowledge AND address non-academic factors that impact academic outcomes while expanding learning opportunities.

This toolkit was developed to provide a "one stop" location of basic information to support efforts of educating the whole child. Should you have questions or need additional information [please email us!](#)



Healthy

Each student enters school healthy and learns about and practices healthy lifestyles.

- [Mental Health Support](#)
- [Nutrition/Farm to School](#)
- [Physical Education and Health](#)
- [Physical Health Services](#)



Safe

Each student learns in an environment that is physically and emotionally safe for students and adults.

- [School Climate](#)
- [School Safety](#)
- [Student Safety](#)



Engaged

Each student is actively engaged in learning and is connected to the school and broader community.

- [Fine Arts](#)
- [Library and Media/Library](#)
- [Social Studies and Civics](#)
- [STEM/STEAM](#)



Supported

Each student has access to personalized learning and is supported by qualified, caring adults.

- [After-school/Summer Programs](#)
- [Dual Language Immersion](#)
- [Early Childhood, Pre-K & Kindergarten](#)



Challenged

Each student is challenged academically and prepared for success in college or further study and for employment and participation in a global environment.

- [AP/Dual Enrollment](#)
- [Computer Science](#)
- [Gifted](#)
- [Technology Integration](#)

Want to see additional information in the toolkit? [Please email us!](#)

www.georgiainsights.com/wholechild



Healthy

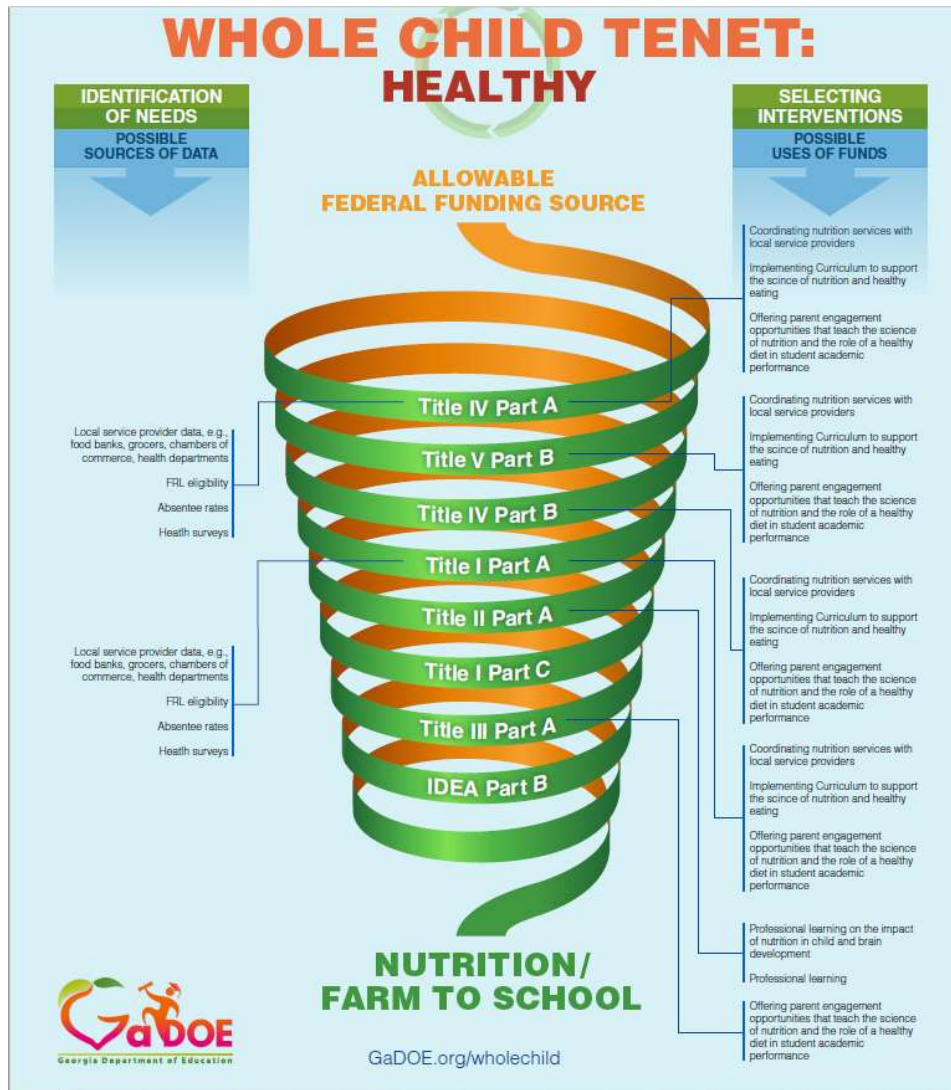
Nutrition/ Farm to School



Nutrition/ Farm to School

- RESEARCH & DATA +
- LEVERAGING FEDERAL FUNDS +
- PROGRAMS & INITIATIVES +
- PARTNERS IN THE WORK +
- TOOLS & RESOURCES +
- SCHOOL/DISTRICT BEST PRACTICES +
- PROFESSIONAL DEVELOPMENT OPPORTUNITIES +

WHOLE CHILD TENET: HEALTHY



Removal of barriers to assist your students in **THEIR** success!



Things to come...

- Student Information System Training
 - Health Module
- School-based Medicaid
 - Medicaid expansion in 2021 to include nursing services for general population students eligible for Medicaid
 - Must be billed by a Registered Nurse or LPN
- School-based Health Center Grants
 - Gov. Kemp \$125M to increase the number of SBHC in GA
- Hearing and Vision Screening Programs
 - Chatt-Flint and SWGA RESA
 - Okefenokee and Oconee RESA

Things to come...

- Office of Whole Child Supports webinar series
 - Topics include: Back to school, school safety, telehealth, etc.
- Expanded Webinar Series
 - School Nurse, School Social Work, SBHC
- Safe School Designation and SRO Training
 - Announced at the School Safety Conference- June 2022
- Georgia Student Health Survey
- MHAT Menu Expansion
 - Students, Community Members, Families- December 2022
- Data Dashboards
 - Community Health and Student Support Services (CPI)
- Whole Child Model School Certification
 - Next cohort promotion in January 2023

Connecting the Dots: Key Takeaways



Contact Information

wholechild@doe.k12.ga.us

@GaDOEWholeChild

OWCS Newsletter Sign-up (QR Code)





Offering a holistic education to
each and every child
in our state.

www.gadoe.org

   @georgiadeptofed

 youtube.com/user/GaDOEmedia

